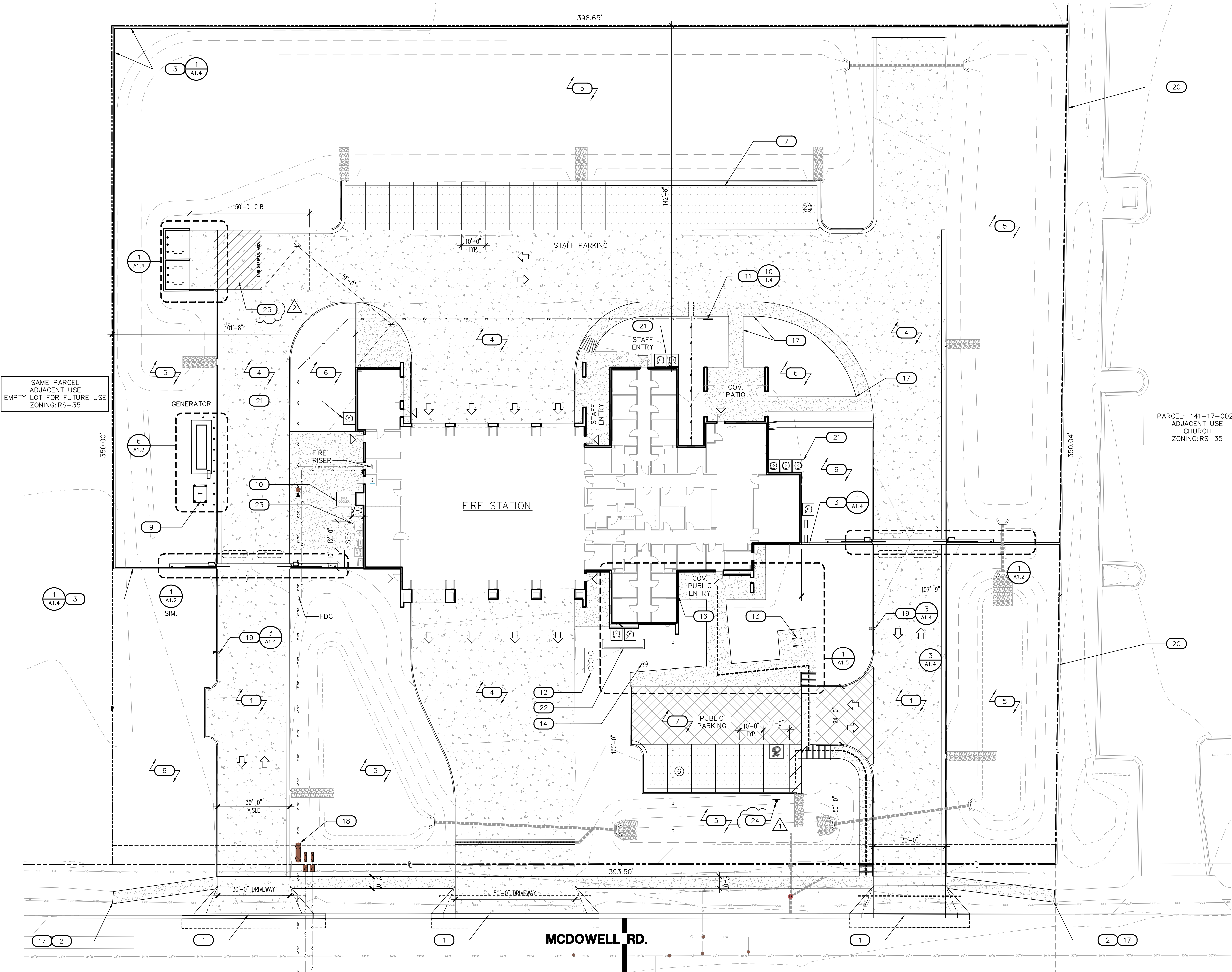


Fire Station 223 site plan: Currently in review for permitting.



1 ARCHITECTURAL SITE PLAN

SCALE: 1" = 20'-0"

LEGEND

- INDICATES ACCESSIBLE ROUTE. RUNNING SLOPE TO BE 1:20 MAX. CROSS SLOPE TO BE 1:48 MAX.
- DIRECTION OF TRAFFIC FLOW
- PARKING COUNT PER ROW

KEY NOTES

- NEW DRIVEWAY PER CITY OF MESA STANDARDS
- PUBLIC SIDEWALK TIE-IN
- 6'-0" PERIMETER CMU SITE WALL
- HEAVY DUTY CONCRETE AT FIRE APPARATUS RESPONSE/ DRIVEWAY, SEE CIVIL DWGS.
- RETENTION BASIN, SEE CIVIL. SEE LANDSCAPE DWGS. FOR GROUND TREATMENT/ COVERAGE
- LANDSCAPE AREA, SEE LANDSCAPE DRAWINGS
- ASPHALT AT PARKING SPACES, TYP. AND AT PUBLIC DRIVE, SEE CIVIL
- 3'-4" PERIMETER CMU SITE WALL, MATCH 6'-0 PERIMETER WALL
- ELECTRICAL TRANSFORMER
- GROUND MOUNTED EVAP. COOLER
- TRUCK-FILL STANDPIPE, SEE DETAIL
- SAND/OIL INTERCEPTOR
- BIKE RACKS, SEE ENLARGED PLAN
- FLAGPOLE, SEE ENLARGED PLAN
- R.O.W. WIDENING DEDICATION, SEE CIVIL
- DEDICATION PLAQUE LOCATION, SEE ENLARGED PLAN. VERIFY FINAL LOCATION WITH OWNER
- CONCRETE SIDEWALK, 6'-0" TYP. U.N.O.
- BACK FLOW PREVENTOR
- CARD READER, SEE GATE PLAN
- EXISTING CMU WALL TO REMAIN, PAINT FIRE STATION SIDE TO MATCH NEW PERIMETER WALL
- HVAC EQUIPMENT, PROVIDE CONCRETE PADS AS SHOWN, SEE MECHANICAL DWGS., TYP.
- 8'x6'x16 CMU SCREEN WALL, SEE ENLARGED PLAN
- 6" THICK CONCRETE PAD - SEE STRUCTURAL & CIVIL DWGS.
- ACCESSIBLE PARKING SIGN, PER MESA STANDARD DETAILS M23.06, M25, AND M39
- AREA OF EXIT DISCHARGE DISPERSAL. AREA TO BE SIZED AS SHOWN BASED ON 82 OCCUPANTS AT 5 SF PER OCCUPANT = 410 SF. AREA TO BE STRIPED AND NOTED AS "SAFE DISPERSAL AREA" W/ 10" HIGH LETTERS, 1" STROKE. AS SHOWN - AREA IS 493 SF

SITE DATA

PARCEL: 141-17-002G

ZONING: RS-35

EXISTING: RS-35

PROPOSED: TO REMAIN

LOT SIZE: 13.67 ACRES TO BE SUBDIVIDED IN FUTURE PORTION OF PARCEL FOR FIRE STATION 3.18 ACRES

SETBACKS (RS-35)

STREET SIDE: 10'

SIDE MIN: 7'

SIDE AGGREGATE: 20'

REAR: 30'

PARKING

REQUIRED: 1 PER EMPLOYEE + 1 FOR SHIFT CHANGE

FIRE DEPT - 10 EMPLOYEES: 10 x 2 = 20 SP.

TOTAL STAFF REQ'D: 20

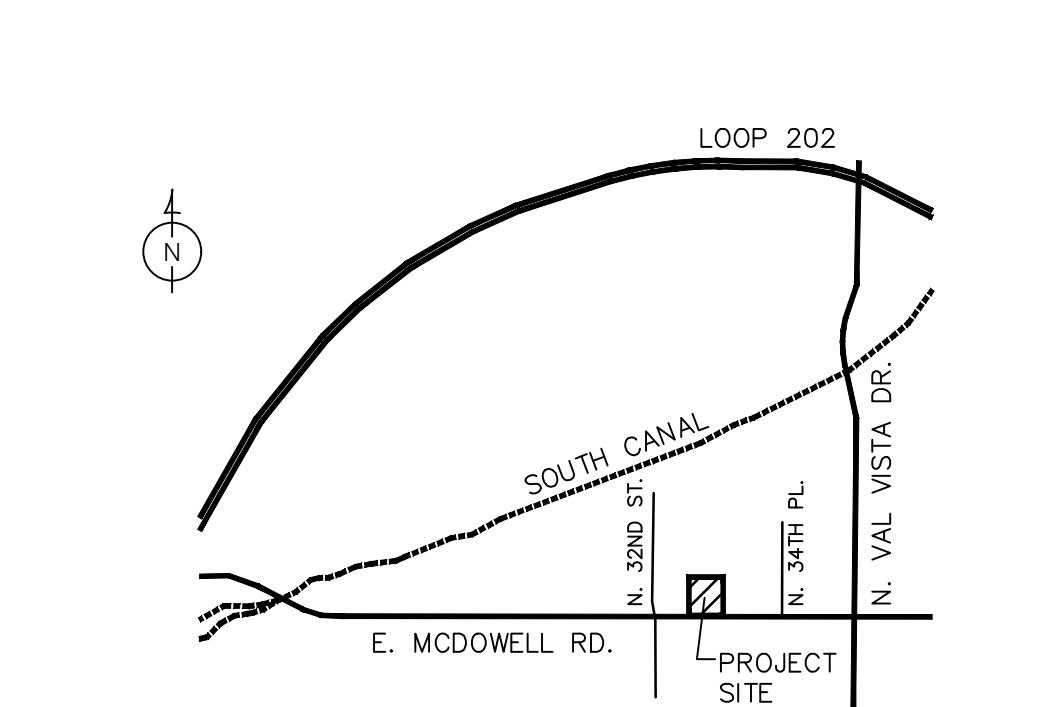
TOTAL STAFF PROV'D: 20

PUBLIC PARKING

PUBLIC SPACES PROVIDED = 6 SP.

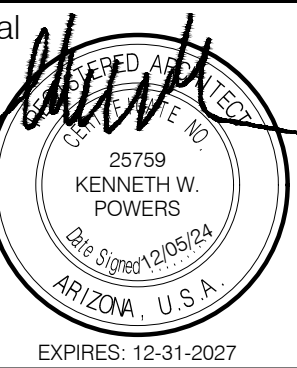
TOTAL SPACES PROV'D: 26 SPACES

VICINITY MAP



Rev.	Date	Description
1	11-14-2024	Project Coordination
2	12-05-2024	City Comments

Perlman
Architects of Arizona



CITY OF MESA
ENGINEERING DEPARTMENT

MESA FIRE-MEDICAL STATION NO. 223
3310 E. MCDOWELL ROAD

SITE PLAN

A1.1

DRAWN BY: JLC

ENGINEER: JR

APPROVED BY: JR

ACTIVITY: PROJ. NO. C10124

SHEET

10 OF 49

CATALOG NUMBER: