



CITY OF MESA

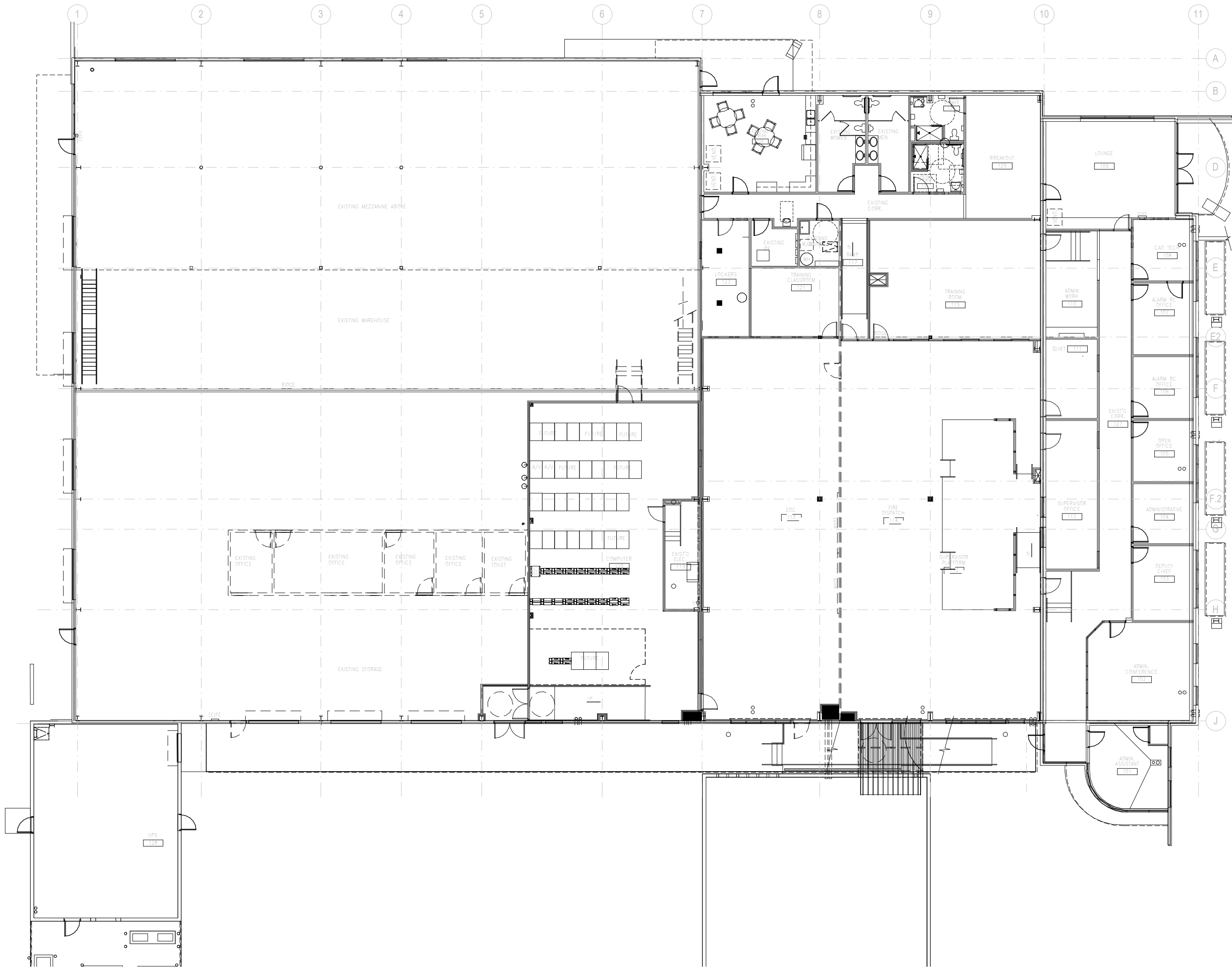
PUBLIC SAFETY COMMUNICATIONS CENTER MODERNIZATION

TEST FIT



Prepared for potential building improvements located at 708 W. Baseline.
**For Reference Only - Not Intended for New Location"

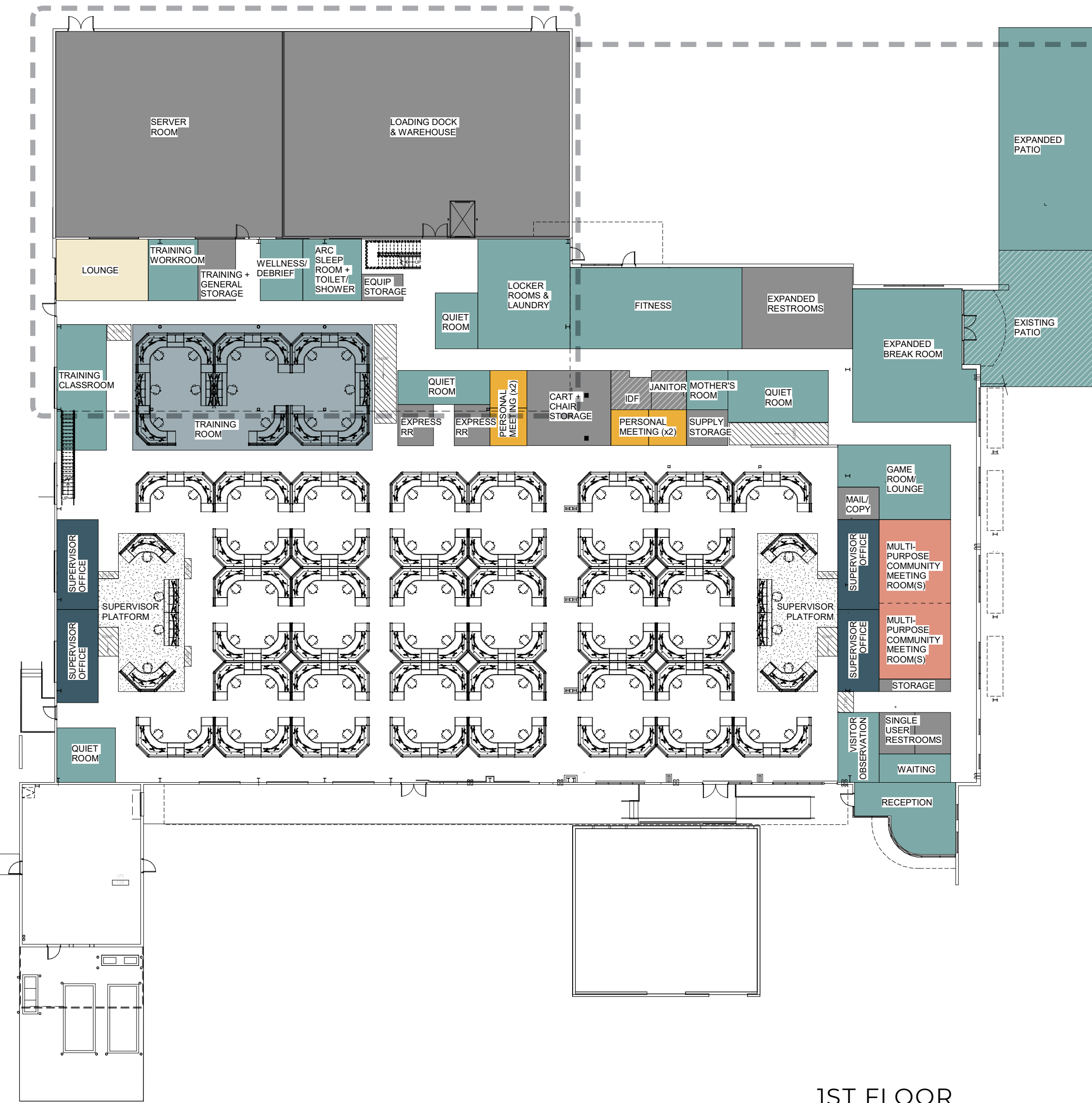
EXISTING PLAN



TEST FIT PLAN B

PROGRAM KEY

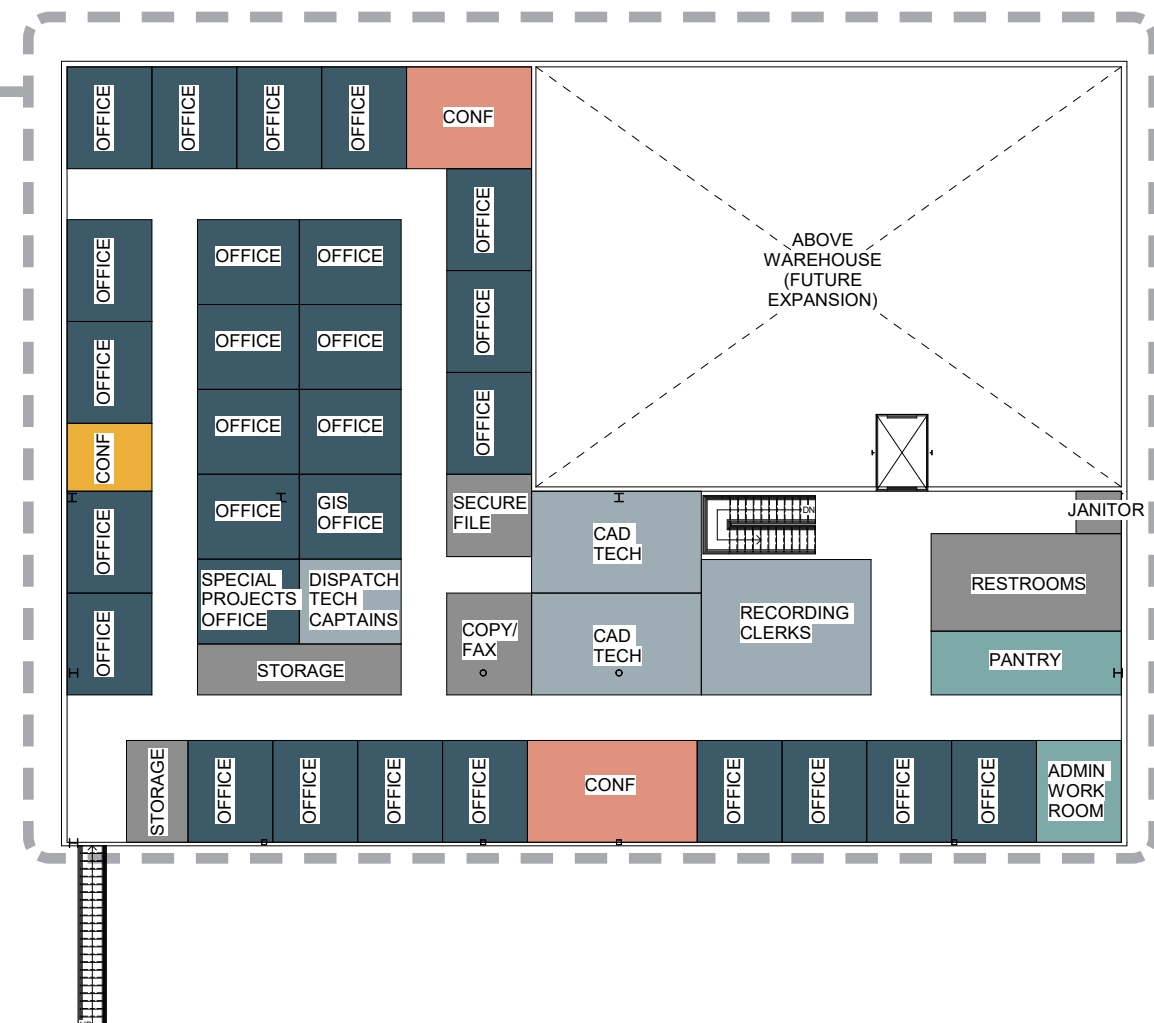
- COLLABORATION
- LARGE CONFERENCE
- OFFICE
- SMALL CONFERENCE
- AMENITY
- WORKSTATIONS
- SUPPORT
- EXISTING CONSTRUCTION TO REMAIN



1ST FLOOR

PROGRAM KEY

- COLLABORATION
- LARGE CONFERENCE
- OFFICE
- SMALL CONFERENCE
- AMENITY
- WORKSTATIONS
- SUPPORT
- EXISTING CONSTRUCTION TO REMAIN



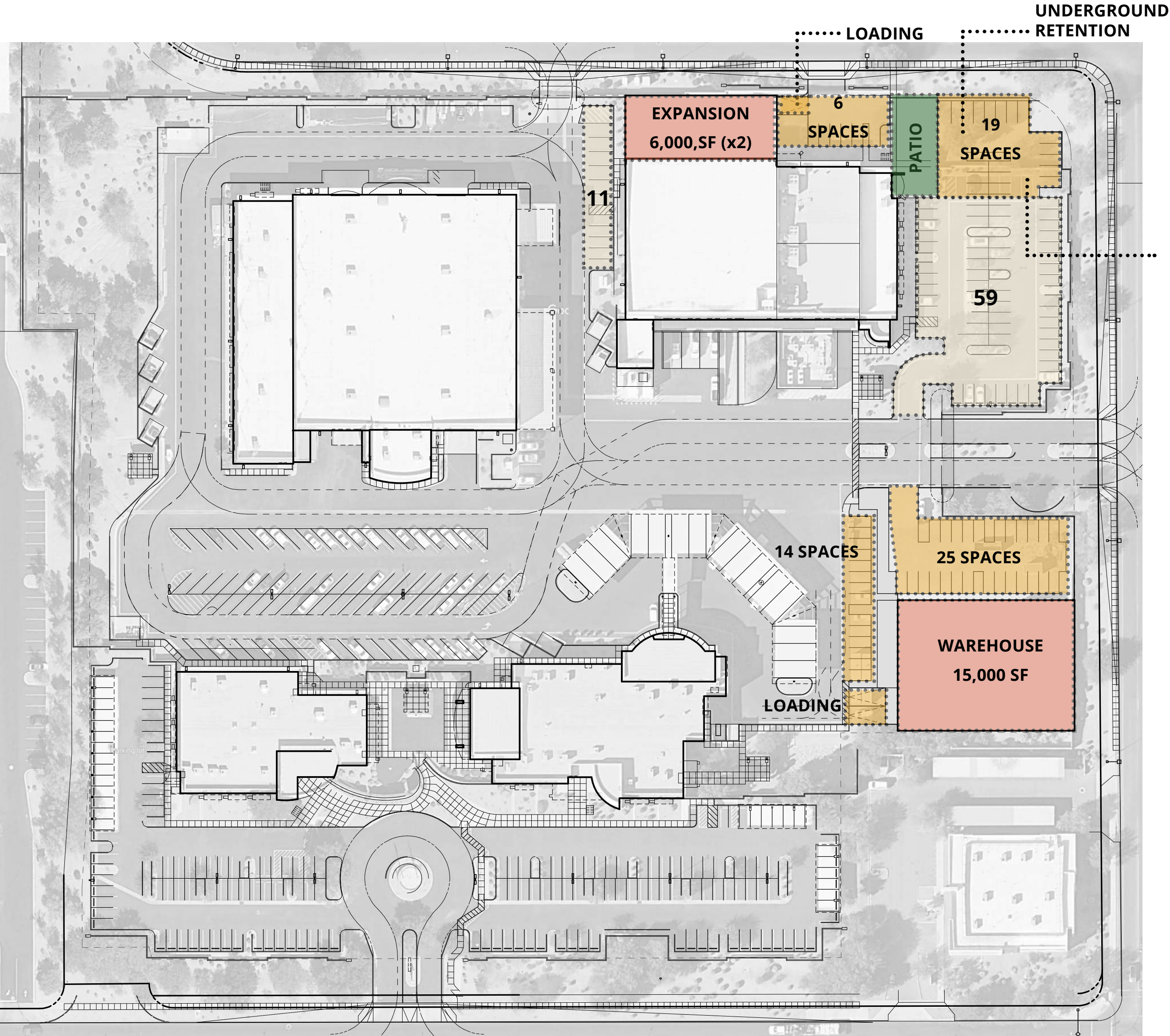
2ND FLOOR

TEST FIT PLAN B

PROGRAM SUMMARY

PROGRAM REQUIREMENTS		POLICE DEPT	FIRE DEPT	SHARED	TOTAL PROGRAM	TEST FIT A	VARIANCE TO PROGRAM	NOTES
Lobby	Receptionist Counter			1	1	1	0	
	Waiting Area			1	1	1	0	
	Men's HC Toilet			1	1	1	0	
	Women's HC Toilet			1	1	1	0	
	Community/Media Room			1	1	1	0	
	Storage Room			1	1	1	0	Utilize mezzanine for storage
	Coffee Station			1	1	1	0	Existing space to be evaluated
	Trophy Cabinet/Awards			1	1	1	0	Existing space to be evaluated
Dispatch	Dispatcher Console	55	17		72	80	8	911 Consoles w/in PD Dispatcher count
	Telemedicine Console		1		1	1	0	
	Supervisor Consoles	4	5		9	8	-1	
	Supervisor Offices	2	2		4	4	0	Confirm total desk heads in each office
	Supply Storage Room	1	1		2	1	-1	Shared
	Dispatch Express Toilet	2	0		2	2	0	Utilize existing adjacent restroom
	Quiet Room	2	2		4	4	0	Share (3) quiet rooms throughout plan
	Personal Meeting Room	1	2		3	4	1	
	Equipment Storage Room	1	1		2	1	-1	Shared
	Chair Storage	2	1		3	1	-2	(1) Large shared room
	Manual Cart Storage		1		1	1	0	In chair storage
Training	Training Supervisor	2	1		3	2	-1	Propose Training as shared resources
	Training Coordinator	2	1		3	2	-1	
	Training Classroom	1	1		2	1	-1	
	Training Dispatch Work Station	10	7		17	10	-7	
	Training Storage Room		1		1	1	0	
	Training Work Room	1			1	1	0	
Administration	Deputy Chief		1		1	1	0	
	Administrator	4	2		6	6	0	
	Admin. Supervisor	1			1	1	0	
	Admin. Assistant	2	1		3	3	0	
	ARC		3		3	3	0	
	Telemedicine Specialist		1		1	1	0	
	MRDC Manager Position		1		1	1	0	
	Lieutenant	1			1	1	0	
	Future Commander	1			1	1	0	
	Unassigned					9	9	
Recording	TOTAL OFFICES	9	9	0	18	27	9	
	Recording Clerks	4	3		7	1	-6	1 room provided
	Recording Office Conf. Table	1			1	1	0	Within Recording Clerks room
Add'l Positions/Spaces	Secure CD Storage/Counter	1			1	1	0	Within Recording Clerks room
	Reprographics / Fax Room	1			1	1	0	Within Copy/Fax room
	Secure File Room	1			1	1	0	Utilize mezzanine for storage
	Recycle / Trash Room	1			1	1	0	Within Copy/Fax room? Warehouse?
	Admin Conference Room	1	1		2	2	0	
	Administrative Workroom	1	1		2	1	-1	(1) shared workroom provided
	Visitor Observation Corridor	1	1		2	1	-1	
	Police Admin Server Room	1			1	1	0	To be allocated in new Server Room
	Dispatch Tech Captain		2		2	1	-1	(1) shared office provided
	CAD Tech Workstations	2	3		5	5	0	Divided within CAD Tech Rooms
	CAD Tech Conference Table	1			1	1	0	Within CAD Tech Room
	GIS Office	1			1	1	0	
	Wellness/debrief room	1			1	1	0	
	Special Projects / Modified Duty Office		1		1	1	0	
	Large Admin. Conference Room (40 +)			1	1	1	0	1st floor Multi-Purpose Rooms
	Locking Emp Binder Cabinet.	2			2	2	0	
	"Go Box" Storage Cabinet	2			2	2	0	
	Copy FAX	1			1	1	0	
	Supply Room	1			1	1	0	
Shared Amenity	Break Room			2	2	2	0	1st floor main Break Room, 2nd floor Pantry
	Patio/Grill Area			1		1	1	
	Locker Room			2	2	2	0	
	Women's Restroom			2	2	2	0	
	Men's Restroom			2	2	2	0	
	ARC Sleeping Room		1		1	1	0	
	ARC Toilet/Shower		1		1	1	0	
	Employee Mail / Notice Area			1	1	1	0	Within break room or one of the lounges
	Lounge			2	2	2	0	
	Supply Storage Room			1	1	1	0	
	Fitness Center/Gym			1	1	1	0	
	Mother's Room			1	1	1	0	

OPTION - EXPANSION



Overall Parking Count

Building Name	SF	Ratio	Spaces
Mesa Fire and Medical Department (Bldg. 1)	19,776	1:375	53
Public Safety Communications Center (Bldg. 2)	30,753	1:300	103
Mesa Fire Dept. Mechanical Repair Shop (Bldg. 3)	51,573	1:600	86
City of Mesa Parks & Rec. (Bldg. 4)	13,668	1:375	37
Public Safety Communications Center Expansion	12,000	1:300	40
New Warehouse	15,000	1:900	17
Total Required			336
With 10% Reduction			303
Total Provided			+/-312

Public Safety Communications Center + Expansion Parking Count

Building Name	SF	Ratio	Spaces
Public Safety Communications Center (Bldg. 2)	30,753	1:300	103
Public Safety Communications Center Expansion	12,000	1:300	40
New Warehouse	15,000	1:900	17
Total Required			160
With 10% Reduction			144
Total Provided			134

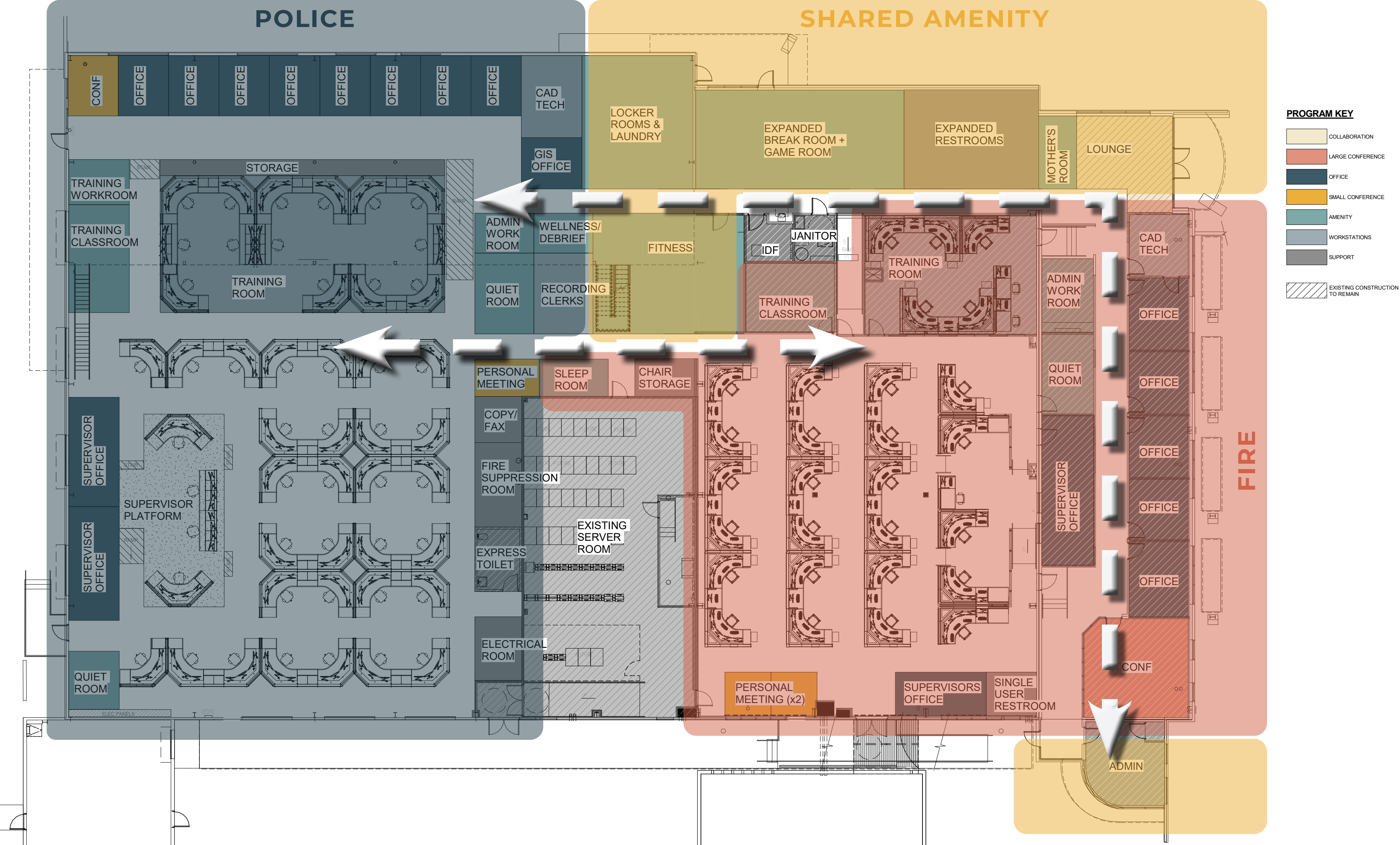
APPENDIX

TEST FIT PLAN A

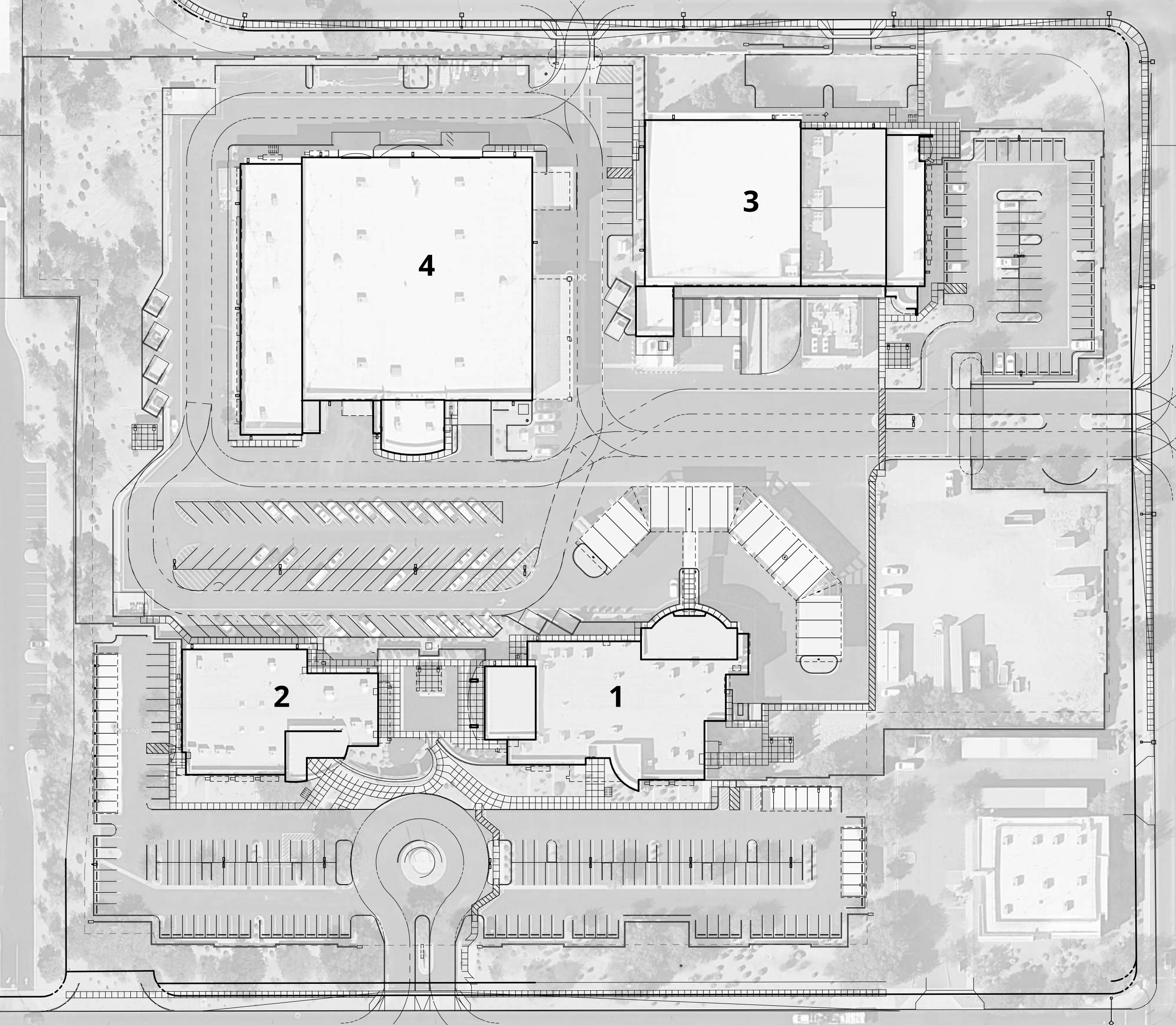
PROGRAM REQUIREMENTS		POLICE DEPT	FIRE DEPT	SHARED	TOTAL PROGRAM	TEST FIT A	VARIANCE TO PROGRAM	NOTES
Lobby	Receptionist Counter			1	1	1	0	Existing space to be evaluated
	Waiting Area			1	1		-1	Existing space to be evaluated
	Men's HC Toilet			1	1		-1	Provided (1) Single-User Unisex Restroom
	Women's HC Toilet			1	1		-1	Provided (1) Single-User Unisex Restroom
	Single-User Unisex Restroom					1	1	
	Community/Media Room			1	1		-1	
	Storage Room			1	1	1	0	Utilize mezzanine for storage
	Coffee Station			1	1		-1	Existing space to be evaluated
Dispatch	Trophy Cabinet/Awards			1	1	0	-1	Existing space to be evaluated
	Dispatcher Console	32	17		49	48	-1	911 Consoles w/in PD Dispatcher count
	Telemedicine Console		1		1	1	0	
	Supervisor Consoles	4	5		9	9	0	
	Supervisor Offices	2	2		4	4	0	Confirm total desk needs in each office
	Supply Storage Room	1	1		2	1	-1	Utilize mezzanine for storage
	Dispatch Express Toilet	2	0		2	1	-1	Utilize existing adjacent restroom
	Quiet Room	2	2		4	3	-1	Share (3) quiet rooms throughout plan
	Personal Meeting Room	1	2		3	4	1	
	Equipment Storage Room	1	1		2	1	-1	Utilize mezzanine for storage
Training	Chair Storage	2	1		3	1	-2	Possible add'l space under stairs or ramp area
	Manual Cart Storage		1		1		-1	Add'l information required
	Training Supervisor	2	1		3	4	1	
	Training Coordinator	2	1		3	2	-1	
	Training Classroom	1	1		2	2	0	
Administration	Training Dispatch Work Station	10	7		17	15	-2	
	Training Work Room	1			1	1	0	
	Deputy Chief		1		1	1	0	
	Administrator	4	2		6	4	-2	To discuss office qty's & sharing opportunities
	Admin. Supervisor	1			1	1	0	
	Admin. Assistant	2	1		3	3	0	
	ARC		3		3	2	-1	To discuss office qty's & sharing opportunities
	Telemedicine Specialist		1		1		-1	To discuss office qty's & sharing opportunities
	MRDC Manager Position		1		1		-1	To discuss office qty's & sharing opportunities
	Lieutenant	1			1	1	0	
Recording	Future Commander	1			1	1	0	
	Recording Clerks	4	3		7	1	-6	1 room provided
	Recording Office Conf. Table	1			1	1	0	Within Recording Clerks room
Add'l Positions/Spaces	Secure CD Storage/Counter	1			1	1	0	Within Recording Clerks room
	Reprographics / Fax Room	1			1	1	0	Within Copy/Fax room
	Secure File Room	1			1	1	0	Utilize mezzanine for storage
	Recycle / Trash Room	1			1	1	0	Within Copy/Fax room?
	Admin Conference Room	1	1		2	2	0	
	Visitor Observation Corridor	1	1		2		-2	Elected to not include at this time
	Police Admin Server Room	1			1	1	0	To be allocated space in existing server room
	Dispatch Tech Captain		2		2	2	0	(2) CAD Tech rooms provided in plan
	CAD Tech Workstations	2	3		5	5	0	Within CAD Tech Rooms
	CAD Tech Conference Table	1			1	1	0	Within CAD Tech Rooms
	GIS Office	1			1	1	0	
	Wellness/debrief room	1			1	1	0	
	Special Projects / Modified Duty Office		1		1		-1	
	Large Admin. Conference Room (40 +)			1	1		-1	
	Locking Emp Binder Cabinet.	2			2	2	0	
	"Go Box" Storage Cabinet	2			2	2	0	
	Copy FAX	1			1	1	0	
	Supply Room	1			1	1	0	
Shared Amenity	Break Room			2	2	1	-1	
	Locker Room			2	2	1	-1	
	Women's Restroom			2	2	2	0	
	Men's Restroom			2	2	2	0	
	Employee Mail / Notice Area			1	1	1	0	Within break room or lounge
	Lounge			2	2	1	-1	
	Administrative Work Room			1	1	2	1	
	Supply Storage Room			1	1	1	0	Utilize mezzanine for storage
	Fitness Center/Gym			1	1	1	0	
	Mother's Room			1	1	1	0	



SCHEMATIC FLOW DIAGRAM



EXISTING PARKING - OVERALL



Building Name	SF	Ratio	Spaces
Mesa Fire and Medical Department (Bldg. 1)	19,776	1:375	53
Public Safety Communications Center (Bldg. 2)	30,753	1:300	103
Mesa Fire Dept. Mechanical Repair Shop (Bldg. 3)	51,573	1:600	86
City of Mesa Parks & Rec. (Bldg. 4)	13,668	1:375	37
Total Required:			279
Total After 10% Reduction*:			252
Total Spaces Provided:			+/-312

*10% Reduction based on closest portion of site being no more than a ¼ of a mile from a light rail station or bus rapid transit stop.

RSP