

*Wood, Patel & Associates, Inc.*  
(520) 325-7333  
www.woodpatel.com

April 28, 2008  
WP# 062753.01  
Page 1 of 5  
See Exhibit "A"

**PARCEL DESCRIPTION**  
**Mesa Proving Grounds**  
**Proposed Overall Boundary**

A parcel of land lying within Sections 14, 15, 22, 23, 26 and 27, Township 1 South, Range 7 East, of the Gila and Salt River Meridian, Maricopa County, Arizona, more particularly described as follows:

Commencing at the northwest corner of said Section 15, a 3-inch Maricopa County Department of Transportation brass cap in handhole stamped 2007 RLS 35694, from which the north quarter corner of said Section 15, a 2-inch Maricopa County aluminum cap stamped RLS 38563, bears South 89°37'01" East (basis of bearing), a distance of 2639.46 feet;

**THENCE** along the north line of said Section 15, South 89°37'01" East, a distance of 50.01 feet, to the **POINT OF BEGINNING**;

**THENCE** continuing, South 89°37'01" East, a distance of 2589.45 feet, to the north quarter corner of said Section 15, a 2-inch Maricopa County aluminum cap stamped RLS 38563;

**THENCE** South 89°37'46" East, a distance of 2628.91 feet, to the northeast corner of said Section 15, a 3-inch Maricopa County brass cap flush stamped 2002 RLS 36563;

**THENCE** leaving said north line, along the north line of said Section 14, South 89°41'01" East, a distance of 2658.58 feet, to the north quarter corner of said Section 14, an iron pipe with no identification;

**THENCE** South 89°45'48" East, a distance of 2661.68 feet, to the northeast corner of said Section 14, a 3-inch Maricopa County brass cap flush stamped 2002 RLS 36563;

**THENCE** leaving said north line, along the east line of said Section 14, South 00°38'25" East, a distance of 2635.16 feet, to the east quarter corner of said Section 14, a 3-inch City of Mesa brass cap in handhole;

**THENCE** South 00°37'57" East, a distance of 2640.25 feet, to the southeast corner of said Section 14, a 1/2-inch rebar with illegible cap;

**THENCE** leaving said east line, along the east line of said Section 23, South 00°50'18" East, a distance of 2628.64 feet, to the east quarter corner of said Section 23, a 1/2-inch rebar with cap stamped RLS 29272;

**THENCE** South 00°42'59" East, a distance of 2637.28 feet, to the southeast corner of said Section 23, a 3-inch Maricopa County brass cap in pothole stamped 2002 RLS 36563;

**THENCE** leaving said east line, along the east line of said Section 26, South 00°43'36" East, a distance of 2644.19 feet, to the east quarter corner of said Section 26, a 2-inch Maricopa County aluminum cap stamped 2002 RLS 36563;

**THENCE** South 00°25'08" East, a distance of 2591.81 feet, to the northerly right-of-way line of Williams Field Road as described in the Maricopa County Condemnation Order CV2004-005453, recorded in Document No. 2005-0928928, Maricopa County Records (M.C.R.);

**THENCE** leaving said east line, along said northerly right-of-way line, a line parallel to and 33 feet north of the southeast quarter of said Section 26, North 89°33'33" West, a distance of 1325.51 feet;

**THENCE** leaving said northerly right-of-way line and said parallel line, South 00°34'39" East, a distance of 33.01 feet, to the south line of said Section 26;

**THENCE** along said south line, North 89°33'33" West, a distance of 1325.41 feet, to the south quarter corner of said Section 26, a 3-inch Maricopa County aluminum cap stamped 2002 RLS 38683;  
**THENCE** North 89°38'20" West, a distance of 1119.51 feet, to a 1/2-inch rebar with tag stamped RLS 29272;  
**THENCE** leaving said south line, North 00°28'37" East, a distance of 2730.93 feet, to a 1/2-inch rebar with tag stamped RLS 29272;  
**THENCE** North 89°13'26" West, a distance of 1323.87 feet, to a 1/2-inch rebar with tag stamped RLS 29272;  
**THENCE** North 00°23'52" East, a distance of 1531.75 feet, to a 1/2-inch rebar with tag stamped RLS 29272;  
**THENCE** North 89°29'17" West, a distance of 3465.06 feet, to a 1/2-inch rebar with tag stamped RLS 29272;  
**THENCE** North 52°18'31" West, a distance of 1625.16 feet, to the north line of said Section 27 and a 1/2-inch rebar with no identification;  
**THENCE** along said north line, North 89°38'34" West, a distance of 826.78 feet, to the easterly right-of-way line of Ellsworth Road as described in Quit Claim Deed recorded in Docket 1606, page 249, (DKT.1) M.C.R.;  
**THENCE** along said easterly right-of-way line, a line parallel to and 50 feet east of the west line of said Section 22, North 00°16'04" West, a distance of 65.00 feet;  
**THENCE** leaving said DKT.1 and said parallel line, South 89°38'34" East, a distance of 5.00 feet, to the easterly right-of-way line of Ellsworth Road as described in the Maricopa County Condemnation Order CV2003-015999, recorded in Document No. 2005-0714663 (DOC.1), M.C.R.;  
**THENCE** along said easterly right-of-way line, a line parallel to and 55 feet east of the west line of said Section 22, North 00°16'04" West, a distance of 2571.31 feet;  
**THENCE** North 00°14'45" West, a distance of 324.85 feet;  
**THENCE** leaving said DOC.1 and said parallel line, North 89°38'34" West, a distance of 5.00 feet, to said easterly right-of-way line per DKT.1;  
**THENCE** along said easterly right-of-way line, a line parallel to and 50 feet east of the west line of said Section 22, North 00°14'45" West, a distance of 2310.10 feet;  
**THENCE** leaving said parallel line, along a line parallel to and 50 feet east of the west line of the southwest quarter of said Section 15, North 00°42'29" West, a distance of 2638.13 feet;  
**THENCE** North 00°34'56" West, a distance of 1177.68 feet;  
**THENCE** leaving said DKT.1 and said parallel line, North 57°48'44" East, a distance of 17.61 feet, to a line parallel to and 65 feet east of the west line of said Section 15;  
**THENCE** along said parallel line, North 00°34'56" West, a distance of 870.51 feet;  
**THENCE** leaving said parallel line, North 89°25'04" East, a distance of 10.00 feet, to a line parallel to and 75 feet east of the west line of said Section 15;  
**THENCE** along said parallel line, North 00°34'56" West, a distance of 484.70 feet;  
**THENCE** leaving said parallel line, North 44°54'02" East, a distance of 21.03 feet, to a line parallel to and 65 feet south of the north line of said Section 15;  
**THENCE** along said parallel line, South 89°37'01" East, a distance of 2548.36 feet;  
**THENCE** South 89°37'46" East, a distance of 2628.95 feet;  
**THENCE** leaving said parallel line, along a line parallel to and 65 feet south of the north line of said Section 14, South 89°41'01" East, a distance of 2659.74 feet;  
**THENCE** leaving said parallel line, North 00°40'39" West, a distance of 32.00 feet, to the south line of that certain easement for highway purposes described in Docket 12368, page 462, M.C.R.;

Wood, Patel & Associates, Inc.  
(520) 325-7333  
www.woodpatel.com

April 28, 2008  
WP# 062753.01  
Page 3 of 5  
See Exhibit "A"

**THENCE** along said south line, a line parallel to and 33 feet south of the north line of said Section 14, North 89°41'01" West, a distance of 2659.17 feet, to the south line of that certain easement for highway purposes described in Docket 12368, page 460, M.C.R.;

**THENCE** along said south line, a line parallel to and 33 feet south of the north line of said Section 15, North 89°37'46" West, a distance of 2628.93 feet;

**THENCE** continuing, North 89°37'01" West, a distance of 2588.90 feet, to the easterly right-of-way line of Ellsworth Road;

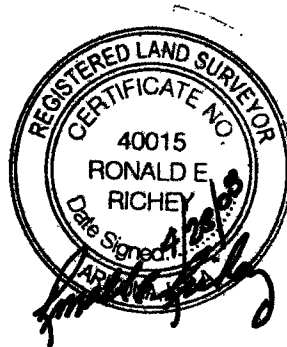
**THENCE** leaving said south line, along said easterly right-of-way line of Ellsworth Road, a line parallel to and 50 feet east of the west line of said Section 15, North 00°34'56" West, a distance of 33.00 feet, to the **POINT OF BEGINNING**.

Containing 3,164.2557 acres, or 137,834,979 square feet of land, more or less.

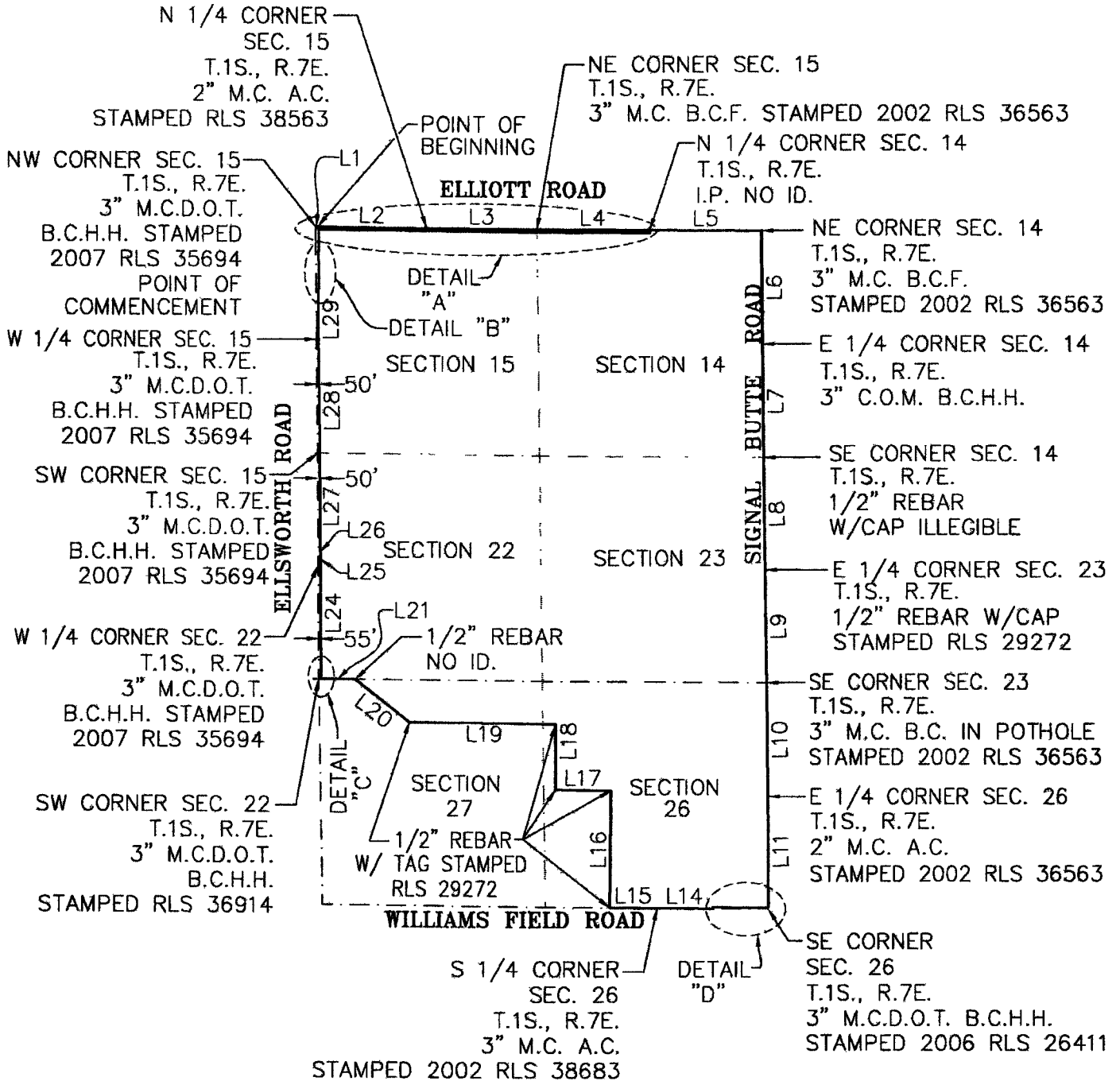
Subject to existing rights-of-way and easements.

This parcel description is based on the unrecorded ATLA Survey of GM Proving Grounds prepared by CMX, dated November 21, 2006, job number 7405.01 and other client provided information. This parcel description is located within an area surveyed by WOOD/PATEL during the month of May, 2007 and any monumentation noted in this parcel description is within acceptable tolerance (as defined in Arizona Boundary Survey Minimum Standards dated 02/14/2002) of said positions based on said survey.

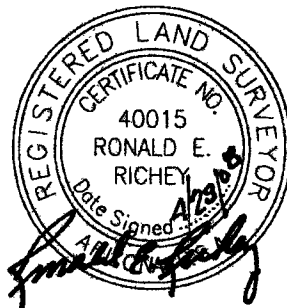
Y:\Parcel Descriptions\062753 01 Mesa Proving Grounds - Proposed Overall Boundary - 04-28-08.doc



EXPIRES 12-31-09



**WOOD/PATEL**  
 1855 North Stapley Drive  
 Mesa, AZ 85203  
 Phone: (480) 834-3300  
 Fax: (480) 834-3320  
 PHOENIX • MESA • TUCSON • GOODYEAR

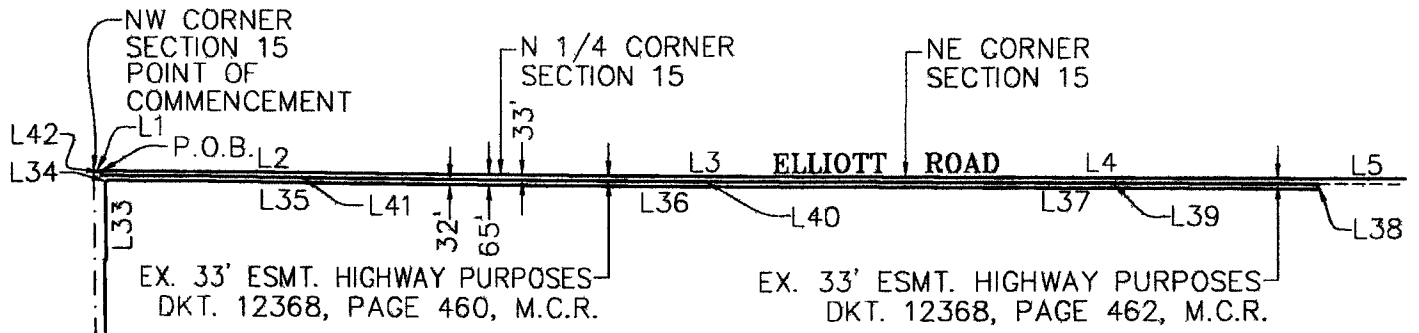


EXPIRES 12-31-09



**EXHIBIT "A"**

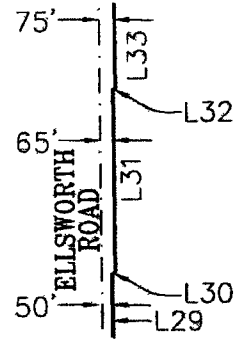
MESA PROVING GROUNDS  
 PROPOSED OVERALL BOUNDARY  
 04-28-08  
 WP#062753.01  
 PAGE 4 OF 5  
 NOT TO SCALE  
 T: \2006\062753\LEGAL  
 2753L05-DB\DWG\2753L05.DWG



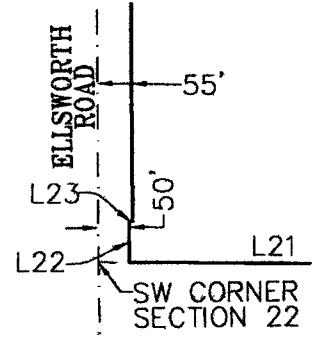
**DETAIL "A"**  
N.T.S.

LINE TABLE		
LINE	BEARING	DISTANCE
L1	S89°37'01"E	50.01'
L2	S89°37'01"E	2589.45'
L3	S89°37'46"E	2628.91'
L4	S89°41'01"E	2658.58'
L5	S89°45'48"E	2661.68'
L6	S00°38'25"E	2635.16'
L7	S00°37'57"E	2640.25'
L8	S00°50'18"E	2628.64'
L9	S00°42'59"E	2637.28'
L10	S00°43'36"E	2644.19'
L11	S00°25'08"E	2591.81'
L12	N89°33'33"W	1325.51'
L13	S00°34'39"E	33.01'
L14	N89°33'33"W	1325.41'
L15	N89°38'20"W	1119.51'
L16	N00°28'37"E	2730.93'
L17	N89°13'26"W	1323.87'
L18	N00°23'52"E	1531.75'
L19	N89°29'17"W	3465.06'
L20	N52°18'31"W	1625.16'
L21	N89°38'34"W	826.78'

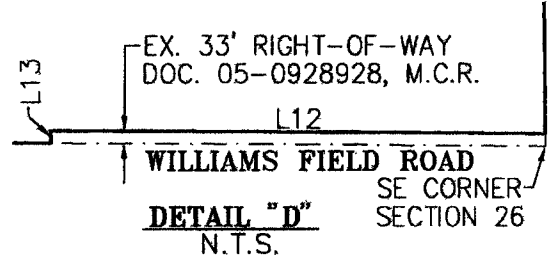
LINE TABLE		
LINE	BEARING	DISTANCE
L22	N00°16'04"W	65.00'
L23	S89°38'34"E	5.00'
L24	N00°16'04"W	2571.31'
L25	N00°14'45"W	324.85'
L26	N89°38'34"W	5.00'
L27	N00°14'45"W	2310.10'
L28	N00°42'29"W	2638.13'
L29	N00°34'56"W	1177.68'
L30	N57°48'44"E	17.61'
L31	N00°34'56"W	870.51'
L32	N89°25'04"E	10.00'
L33	N00°34'56"W	484.70'
L34	N44°54'02"E	21.03'
L35	S89°37'01"E	2548.36'
L36	S89°37'46"E	2628.95'
L37	S89°41'01"E	2659.74'
L38	N00°40'39"W	32.00'
L39	N89°41'01"W	2659.17'
L40	N89°37'46"W	2628.93'
L41	N89°37'01"W	2588.90'
L42	N00°34'56"W	33.00'



**DETAIL "B"**  
N.T.S.



**DETAIL "C"**  
N.T.S.



**DETAIL "D"**  
N.T.S.

**EXHIBIT "A"**

MESA PROVING GROUNDS  
PROPOSED OVERALL BOUNDARY  
04-28-08  
WP#062753.01  
PAGE 5 OF 5  
NOT TO SCALE  
T: \2006\062753\LEGAL  
2753L05-DB\DWG\2753L05.DWG

**WOOD/PATEL**  
1855 North Stapley Drive  
Mesa, AZ 85203  
Phone: (480) 834-3300  
Fax: (480) 834-3320  
PHOENIX • MESA • TUCSON • GOODYEAR



EXPIRES 12-31-09

-----  
Parcel name: 2753L05

North: 855047.5786	East : 785834.9770
Line Course: S 89-37-01 E	Length: 2589.4499
North: 855030.2667	East : 788424.3690
Line Course: S 89-37-46 E	Length: 2628.9140
North: 855013.2646	East : 791053.2280
Line Course: S 89-41-01 E	Length: 2658.5795
North: 854998.5839	East : 793711.7670
Line Course: S 89-45-48 E	Length: 2661.6797
North: 854987.5896	East : 796373.4240
Line Course: S 00-38-25 E	Length: 2635.1565
North: 852352.5976	East : 796402.8711
Line Course: S 00-37-57 E	Length: 2640.2479
North: 849712.5106	East : 796432.0168
Line Course: S 00-50-18 E	Length: 2628.6373
North: 847084.1547	East : 796470.4768
Line Course: S 00-42-59 E	Length: 2637.2832
North: 844447.0776	East : 796503.4508
Line Course: S 00-43-36 E	Length: 2644.1946
North: 841803.0957	East : 796536.9855
Line Course: S 00-25-08 E	Length: 2591.8124
North: 839211.3525	East : 796555.9340
Line Course: N 89-33-33 W	Length: 1325.5056
North: 839221.5509	East : 795230.4677
Line Course: S 00-34-39 E	Length: 33.0052
North: 839188.5473	East : 795230.8003
Line Course: N 89-33-33 W	Length: 1325.4142
North: 839198.7450	East : 793905.4254
Line Course: N 89-38-20 W	Length: 1119.5072
North: 839205.8007	East : 792785.9404
Line Course: N 00-28-37 E	Length: 2730.9280
North: 841936.6341	East : 792808.6731
Line Course: N 89-13-26 W	Length: 1323.8684
North: 841954.5662	East : 791484.9261
Line Course: N 00-23-52 E	Length: 1531.7479
North: 843486.2772	East : 791495.5602
Line Course: N 89-29-17 W	Length: 3465.0593
North: 843517.2375	East : 788030.6393
Line Course: N 52-18-31 W	Length: 1625.1634
North: 844510.8756	East : 786744.6224
Line Course: N 89-38-34 W	Length: 826.7814
North: 844516.0303	East : 785917.8570
Line Course: N 00-16-04 W	Length: 65.0039
North: 844581.0335	East : 785917.5532
Line Course: S 89-38-34 E	Length: 5.0003
North: 844581.0023	East : 785922.5534
Line Course: N 00-16-04 W	Length: 2571.3074
North: 847152.2817	East : 785910.5362
Line Course: N 00-14-45 W	Length: 324.8536
North: 847477.1323	East : 785909.1424
Line Course: N 89-38-34 W	Length: 5.0003
North: 847477.1634	East : 785904.1422
Line Course: N 00-14-45 W	Length: 2310.1002
North: 849787.2424	East : 785894.2305
Line Course: N 00-42-29 W	Length: 2638.1313
North: 852425.1722	East : 785861.6296
Line Course: N 00-34-56 W	Length: 1177.6788
North: 853602.7902	East : 785849.6626

2753L05.txt

Line Course: N 57-48-44 E	Length: 17.6123	North: 853612.1722	East : 785864.5680
Line Course: N 00-34-56 W	Length: 870.5100	North: 854482.6373	East : 785855.7223
Line Course: N 89-25-04 E	Length: 10.0000	North: 854482.7389	East : 785865.7218
Line Course: N 00-34-56 W	Length: 484.6976	North: 854967.4115	East : 785860.7965
Line Course: N 44-54-02 E	Length: 21.0337	North: 854982.3103	East : 785875.6437
Line Course: S 89-37-01 E	Length: 2548.3582	North: 854965.2732	East : 788423.9450
Line Course: S 89-37-46 E	Length: 2628.9519	North: 854948.2708	East : 791052.8419
Line Course: S 89-41-01 E	Length: 2659.7380	North: 854933.5837	East : 793712.5393
Line Course: N 00-40-39 W	Length: 32.0048	North: 854965.5863	East : 793712.1609
Line Course: N 89-41-01 W	Length: 2659.1677	North: 854980.2702	East : 791053.0338
Line Course: N 89-37-46 W	Length: 2628.9332	North: 854997.2725	East : 788424.1555
Line Course: N 89-37-01 W	Length: 2588.8974	North: 855014.5807	East : 785835.3160
Line Course: N 00-34-56 W	Length: 33.0047	North: 855047.5837	East : 785834.9806

Perimeter: 67902.9211 Area: 137,834,979 sq. ft. 3,164.2557 acres

Mapcheck Closure - (Uses listed courses, radii, and deltas)  
 Error Closure: 0.0062 Course: N 35-38-31 E  
 Error North: 0.00507 East : 0.00364  
 Precision 1: 10,952,084.0161