

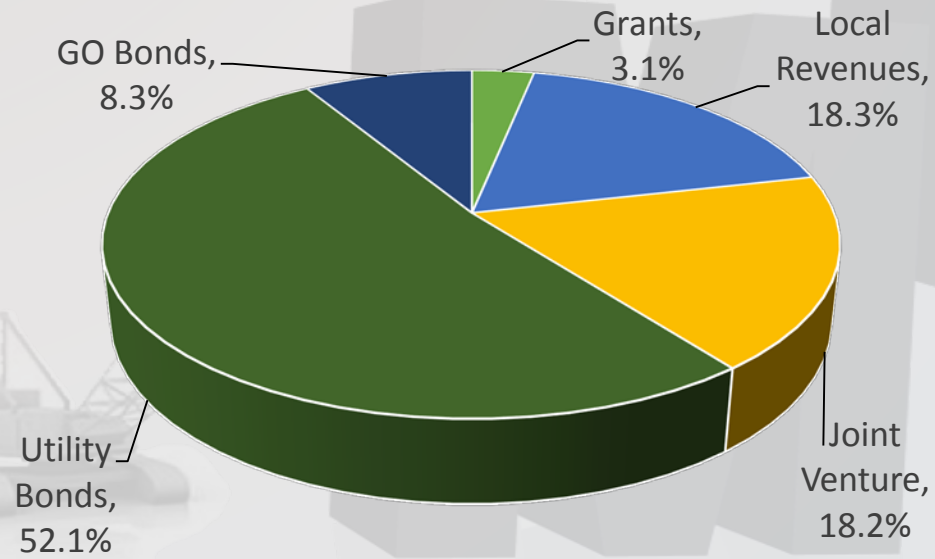


FY 2018 - 2022
UTILITIES CIP OVERVIEW
CITY COUNCIL STUDY SESSION
APRIL 13, 2017

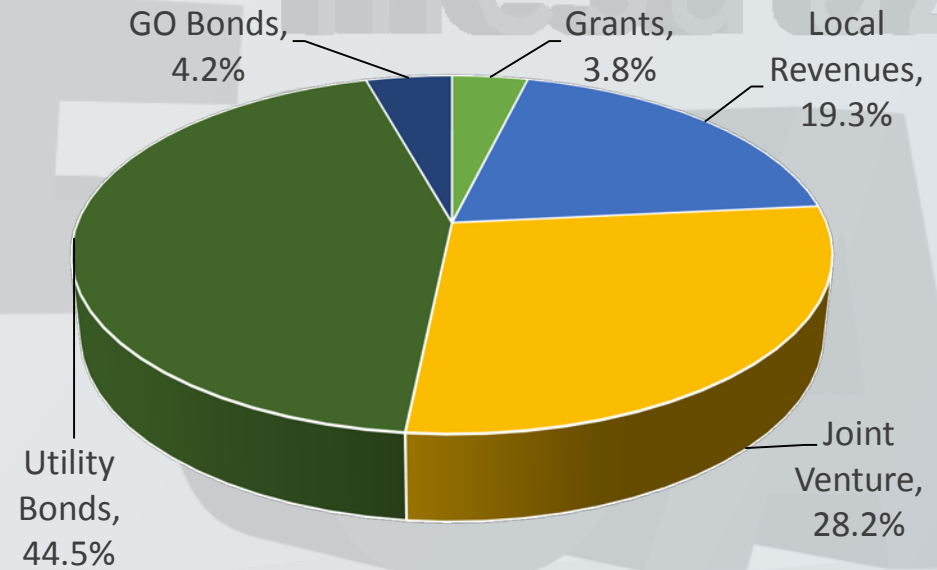
Presented by the Office of Management and Budget and the Engineering Department

Funded Project Summary Proposed Five-Year CIP*

FY 17/18



Five-Year



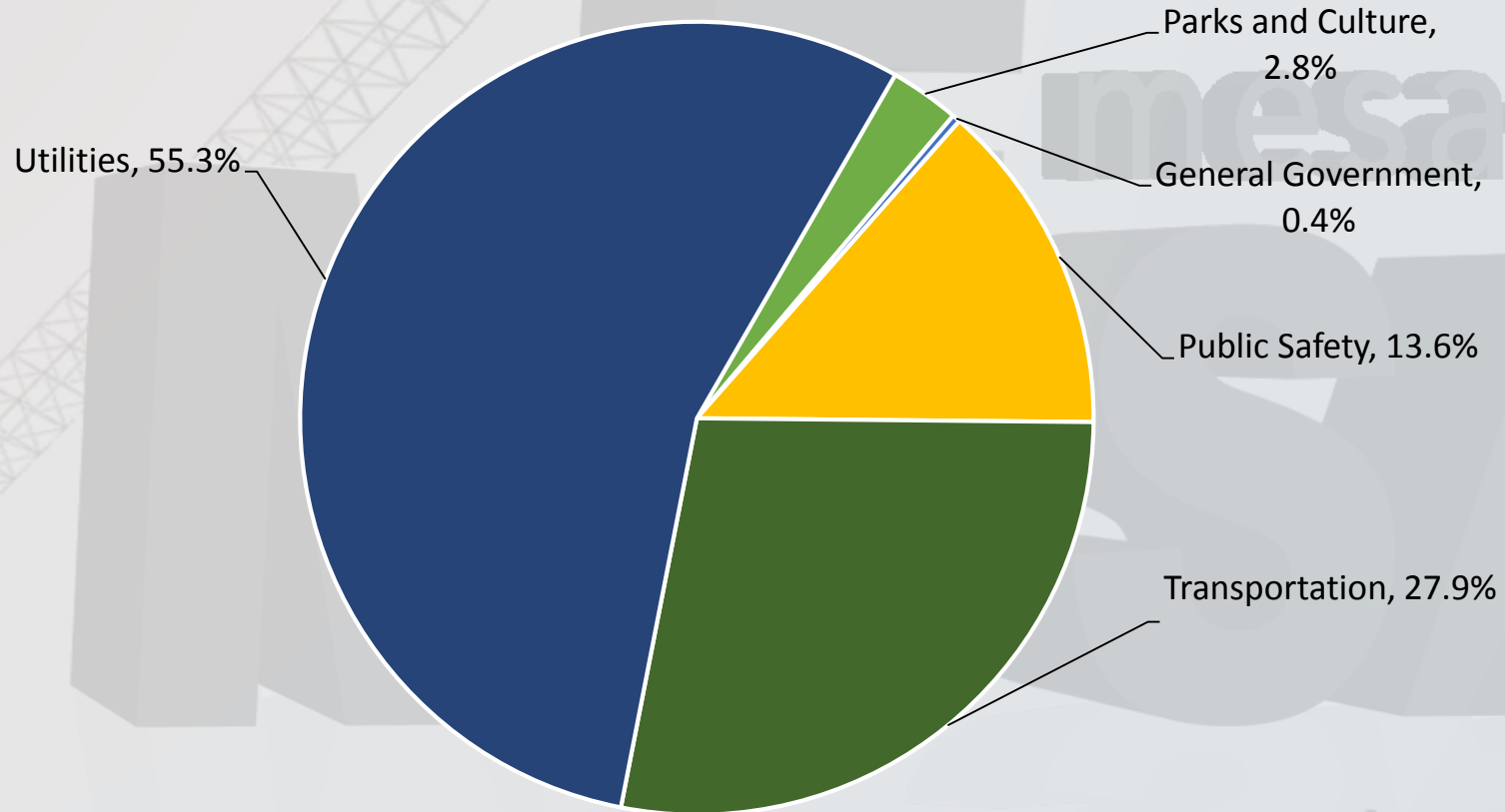
*Does not include potential future bond elections

Funded Project Summary Proposed Five – Year CIP*

<u>Funding Source</u>	<u>FY 17/18</u>	<u>Five-Year</u>
General Obligation Bonds	\$24.2M	\$31.5M
Utility Revenue Bonds	\$151.8M	\$336.0M
Local Revenues	\$53.2M	\$145.1M
Joint Ventures	\$52.9M	\$212.4M
Grants	\$9.0M	\$28.7M

*Does not include potential future bond elections

Five-Year Category Funding*



*Does not include potential future bond elections

Major Capital Projects



Parks



Public Safety



Transportation



Water & Wastewater



Electric & Gas

General
Obligation
(April 6)

**Enterprise
(April 13)**

2014 Utility Bond Programs Water, Wastewater, Gas & Electric

	Water	Wastewater	Gas	Electric
Lifecycle Replacement/Reliability	\$63.3M	\$24.4M	\$19.2	\$7.2M
Contractual Obligations	\$46.5 M	\$20.4M	-----	-----
Customer Demand in SE Mesa	\$197.3M	\$131M	-----	-----
Customer Demand Citywide	\$8.6M	\$2.4M	\$27.5	\$2.9
System Reinforcement	-----	-----	\$12.4	\$16.9
Total	\$315.7M	\$178.2M	\$59.1	\$27M

Water Resources

2014 Utility Bonds

- Water \$315.7M
- Wastewater \$178.2M

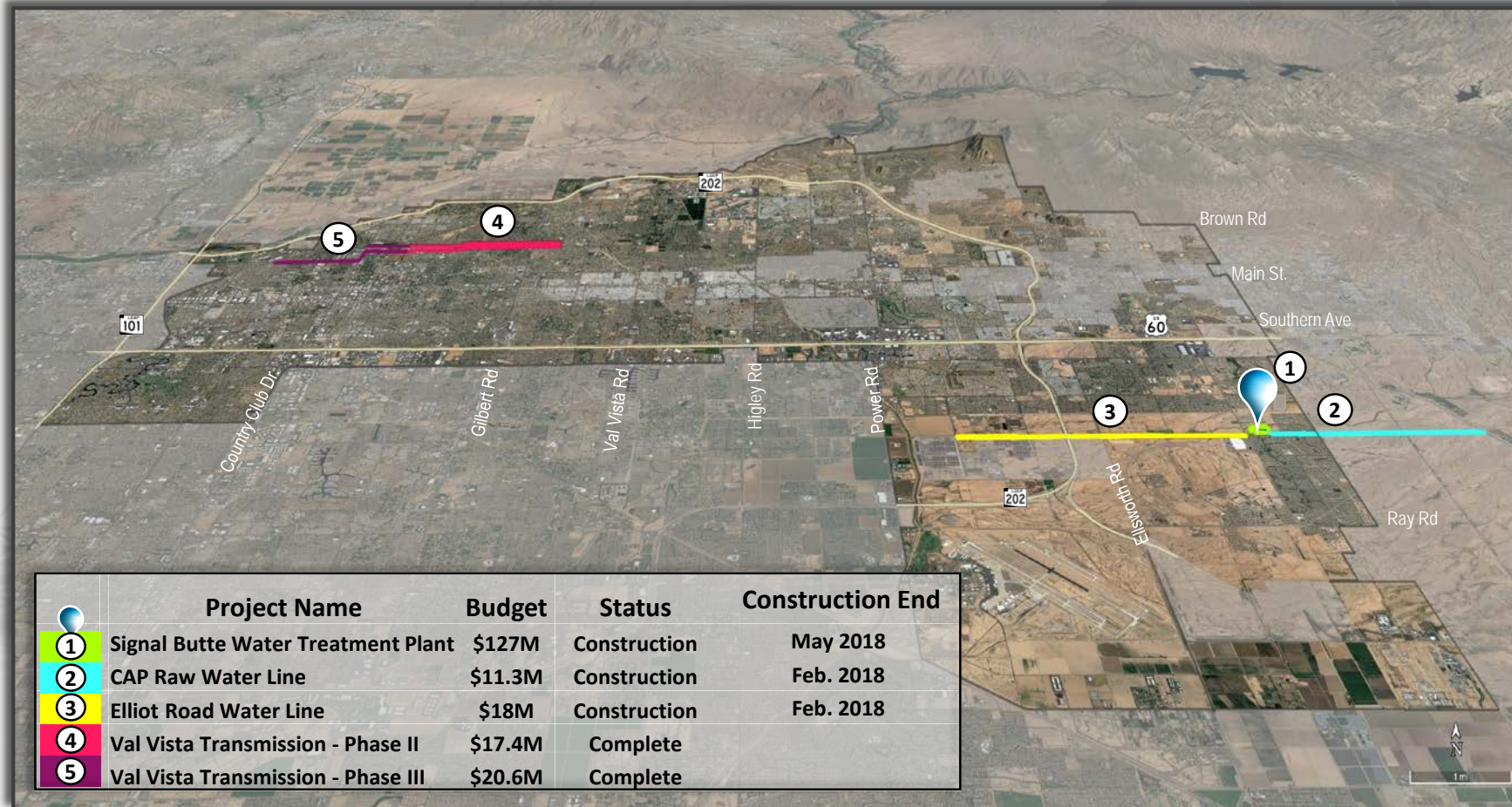


Water

Lifecycle Replacement	\$63.3M	<ul style="list-style-type: none">• 10 Quarter Section Waterline Replacement Projects• 4 Well Projects• Brown Rd. Water Plant Misc. Improvements
Contractual Obligations	\$46.5 M	<ul style="list-style-type: none">• Val Vista Pipeline Phases II & III• Val Vista Water Plant Contract w/Phoenix• Water Settlement Contract
Customer Demand in SE Mesa	\$197.3M	<ul style="list-style-type: none">• Signal Butte Water Plant• CAP Raw Water Main• 3 Transmission Main Projects• 8 Well Projects• 8 Pipeline Projects• Gateway Infrastructure
Customer Demand-Citywide	\$8.6M	<ul style="list-style-type: none">• Transfer Station 3 Upgrade• Misc. Waterlines

Total \$315.7M

5 Major Water Projects = 61% of Total Bonds

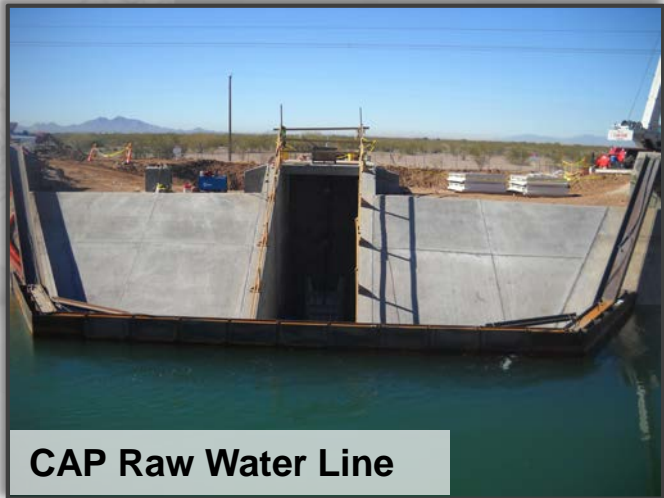


Major Water Projects

Val Vista Pipeline (Phases II & III)



Elliot Road Water Line

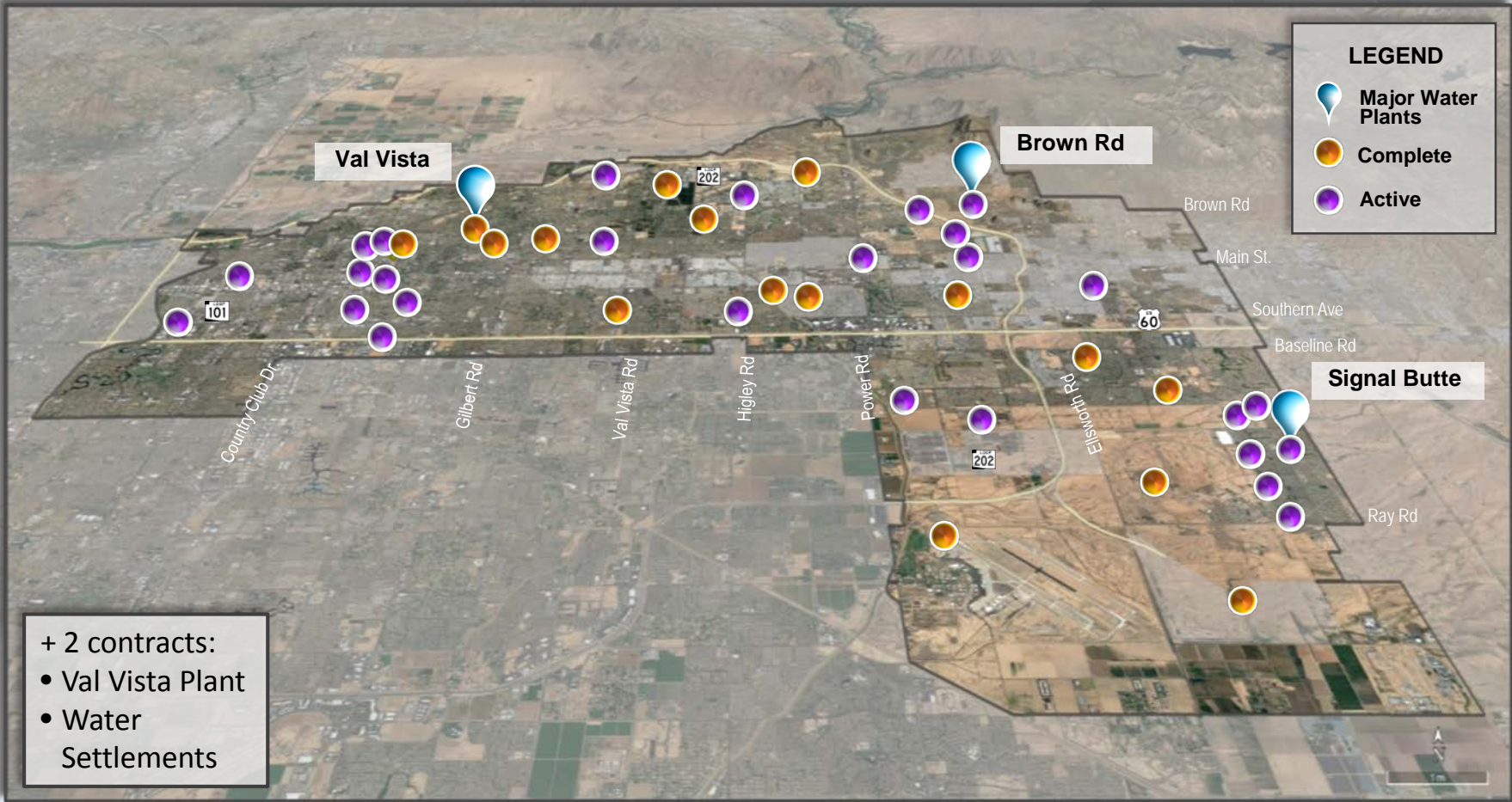


CAP Raw Water Line



Signal Butte WRP

All Water Projects



Wastewater

Lifecycle Replacement	\$24.4M	<ul style="list-style-type: none">• Misc. Greenfield Water Rec Plant Improvements• Lift Station, Pipeline & Manhole Projects• SE Plant Rehabilitation Projects
Contractual Obligations	\$20.4M	<ul style="list-style-type: none">• 91st. Ave. WW Plant Mesa Share
Customer Demand in SE Mesa	\$131M	<ul style="list-style-type: none">• 8 Sewer Projects• Greenfield WRP Expansion
Customer Demand-Citywide	\$2.4M	<ul style="list-style-type: none">• Septic to Sewer Program
Total	\$178.2M	

One Major Wastewater Project = 74% of Total Bonds Greenfield Water Reclamation Plant



Status

Partners: Town of Gilbert
Town of Queen Creek

In Design Phase

Est. Construction Start:
1st Quarter 2018

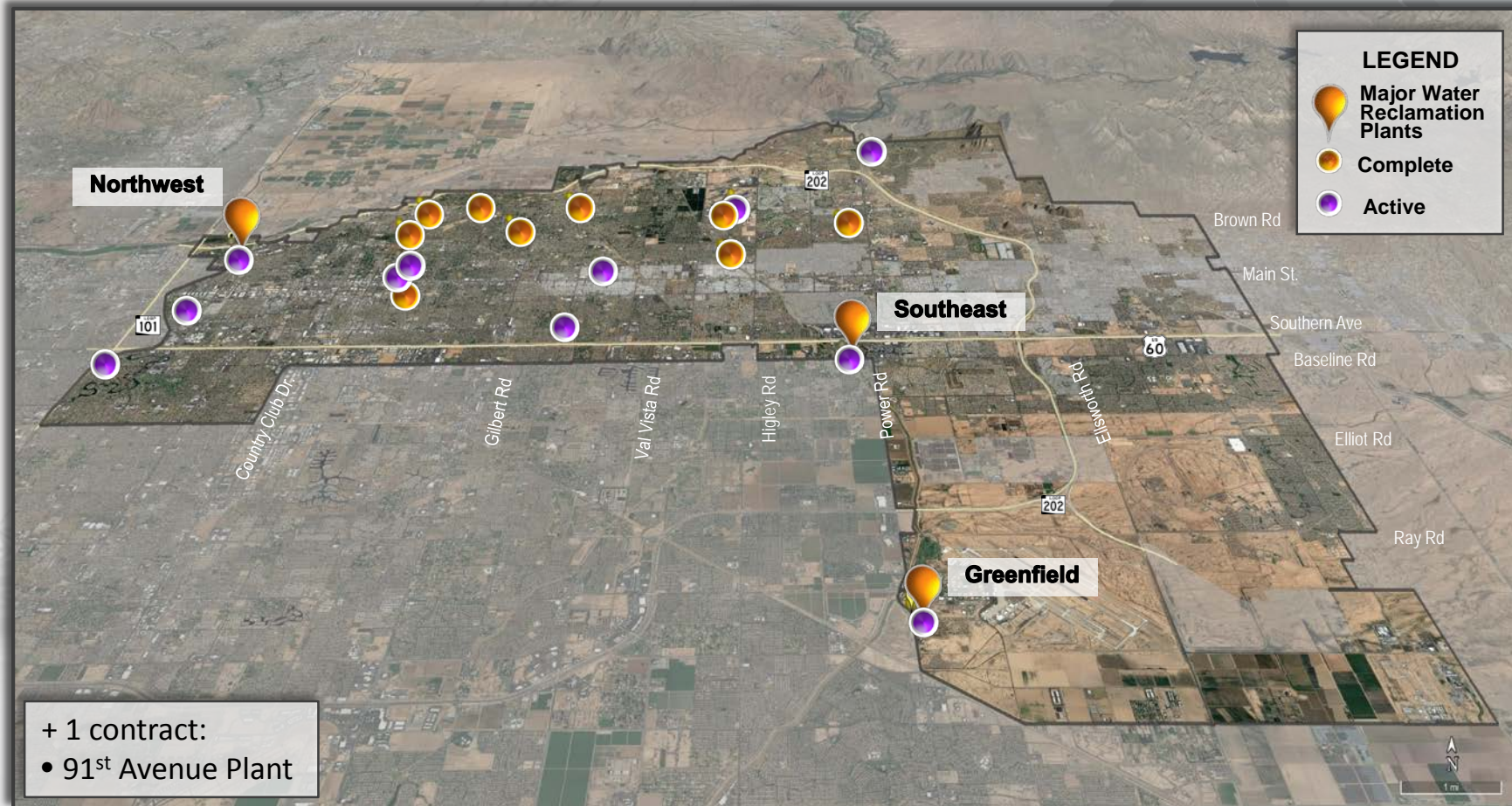
Est. Construction End:
3rd Quarter 2020

Greenfield Water Reclamation Plant Allocation Percentages

<u>Current</u>	
Mesa	41.8%
Gilbert	39.8%
Queen Creek	18.4%

<u>After Current Expansion</u>	
Mesa	62.2%
Gilbert	31.8%
Queen Creek	6.0%

Wastewater Projects



Energy Resources

2014 Utility Bond

- Electric
- Gas

\$27M

\$59.1M

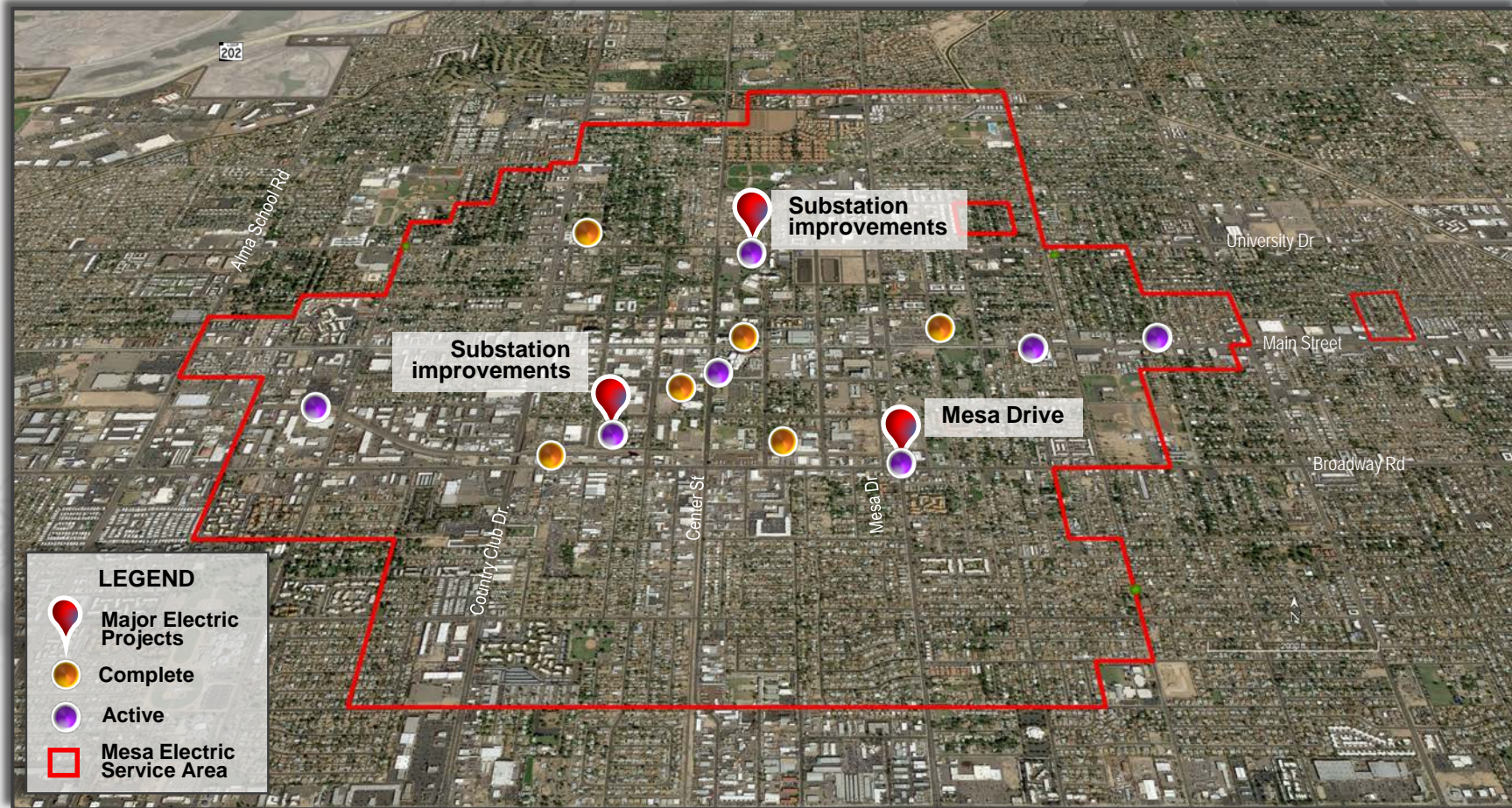


Electric

Lifecycle Replacement	\$7.2M	<ul style="list-style-type: none">• Distribution – Overhead• Transmission• Substation Improvements• Metering
System Reinforcement	\$16.9M	<ul style="list-style-type: none">• Mesa Drive Phase II• Distribution-Underground• Generation• Horne Utility Replacement• Gilbert Road Light Rail Extension
Customer Demand	\$2.9M	<ul style="list-style-type: none">• New Services• Substation to Park Conversion
Totals		\$27M



Electric Projects



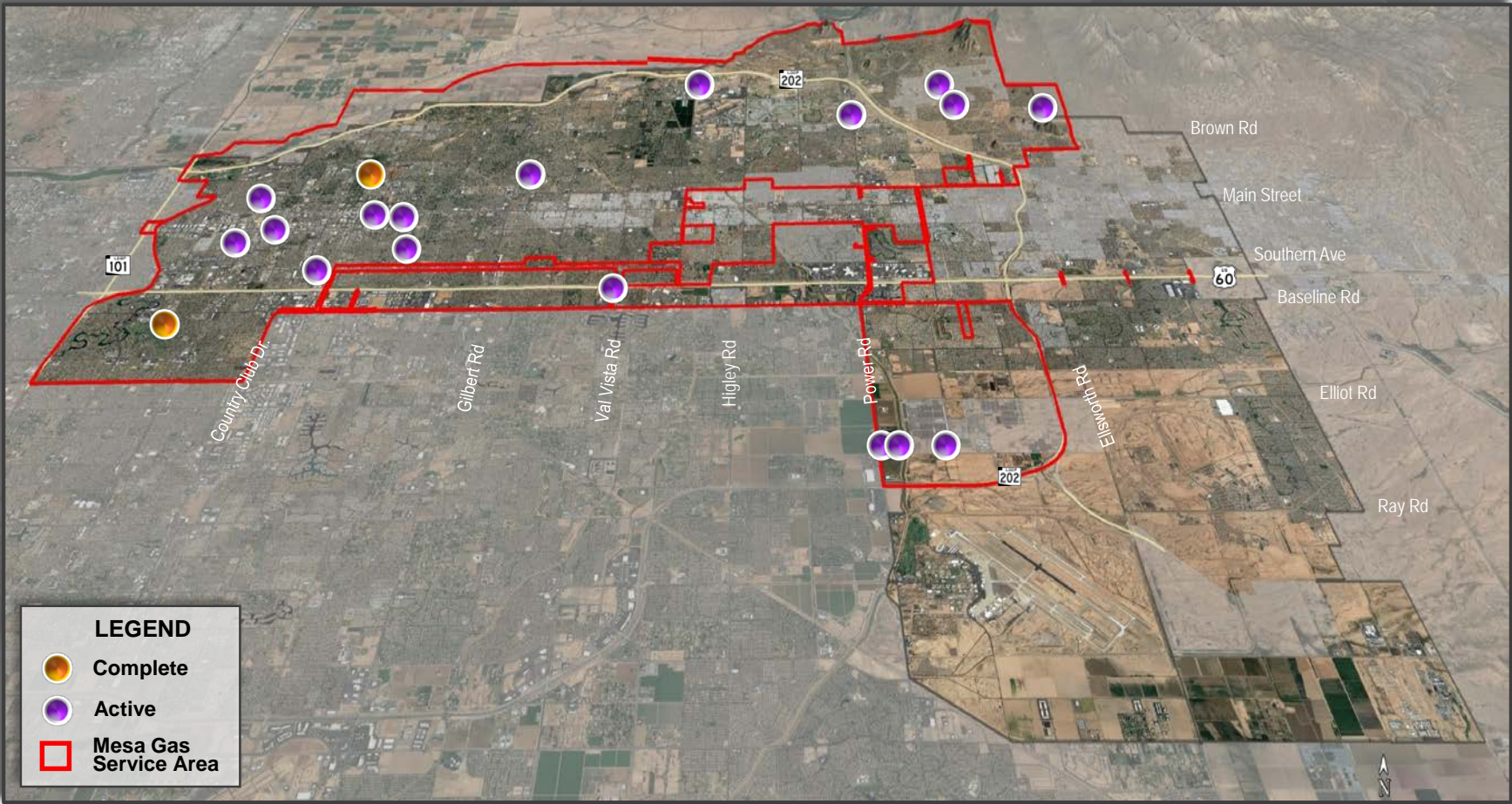
Gas

Lifecycle Replacement	\$19.2M	<ul style="list-style-type: none"> • Coordinated Projects • Main Replacements • Service Replacements • Meter Replacements
System Reinforcement	\$12.4M	<ul style="list-style-type: none"> • Mains • HP Mains • Pressure Regulation Stations • SCADA • Cross Ties
Customer Demand	\$27.5M	<ul style="list-style-type: none"> • New Mains • New Meters • New Service

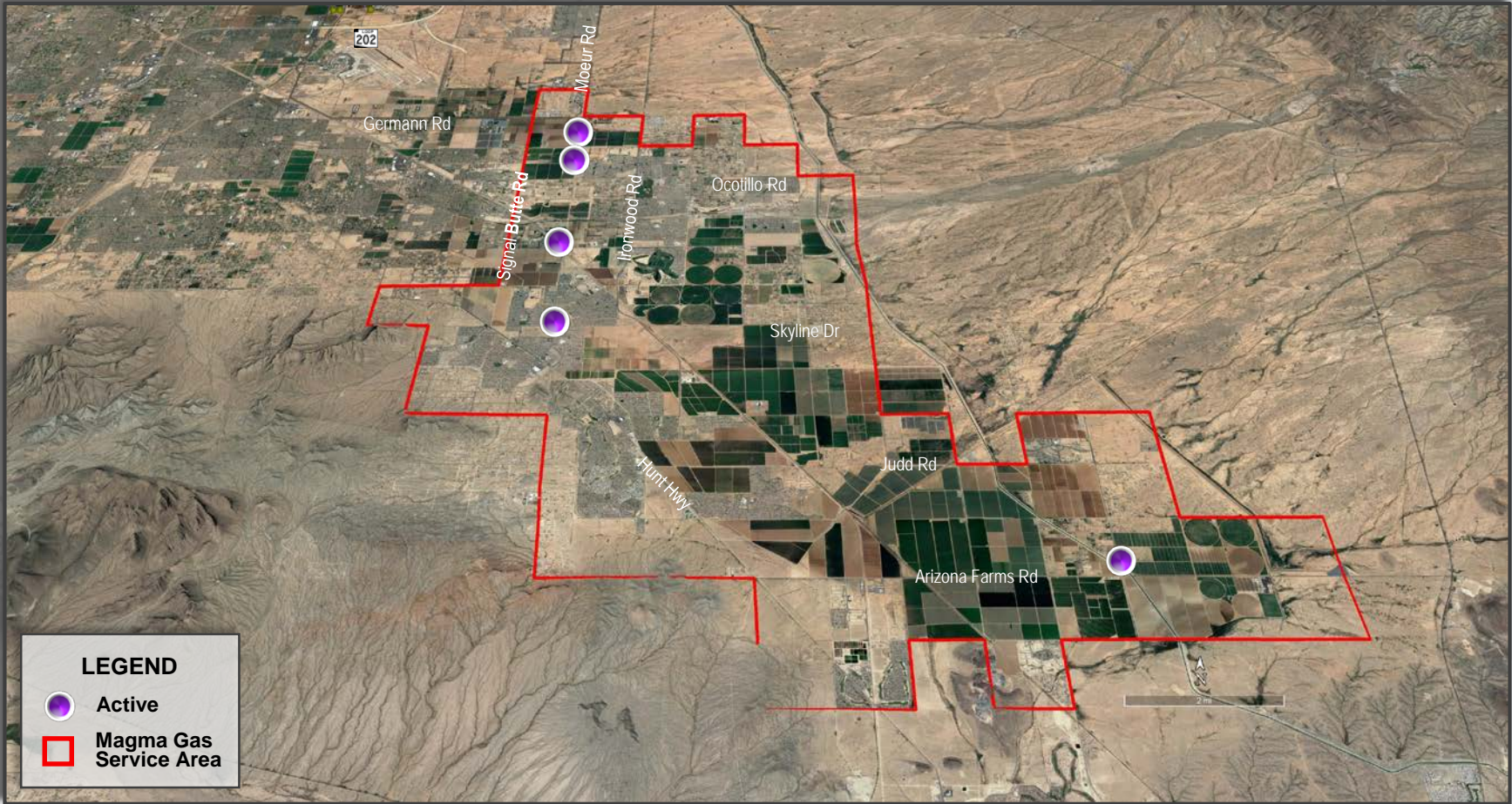
Totals \$59.1M



Gas Projects in Mesa Service Area



Gas Projects in Magma Service Area



Nature of Electric and Gas Projects

PROJECT SCHEDULE DRIVERS:

- Gas & Many Electric are Under Streets + Gas Joint Trenched with Water:

\$20M or 23% of Program

- Customer Demand +New Customers:

\$30M or 35% of Program



There's more . . .

Online Active CIP Project Map

[Mesa Active CIP Map](#)

The background features a construction site scene. On the left, a large crane is lifting a large, grey, 3D block letter 'E'. In the foreground, there are several traffic cones. The overall scene is rendered in a light, semi-transparent style.

Discussion


mesa-az

MESA