

CIP BOND PLANNING COST ESTIMATES

City Council Study Session
31st May, 2018



Beth Huning | Engineering Department

Scott Butler | Office of Management & Budget

Parks & Cultural

CATEGORIES



ATHLETIC FIELDS



PARK AMENITIES



PATHS



CULTURAL

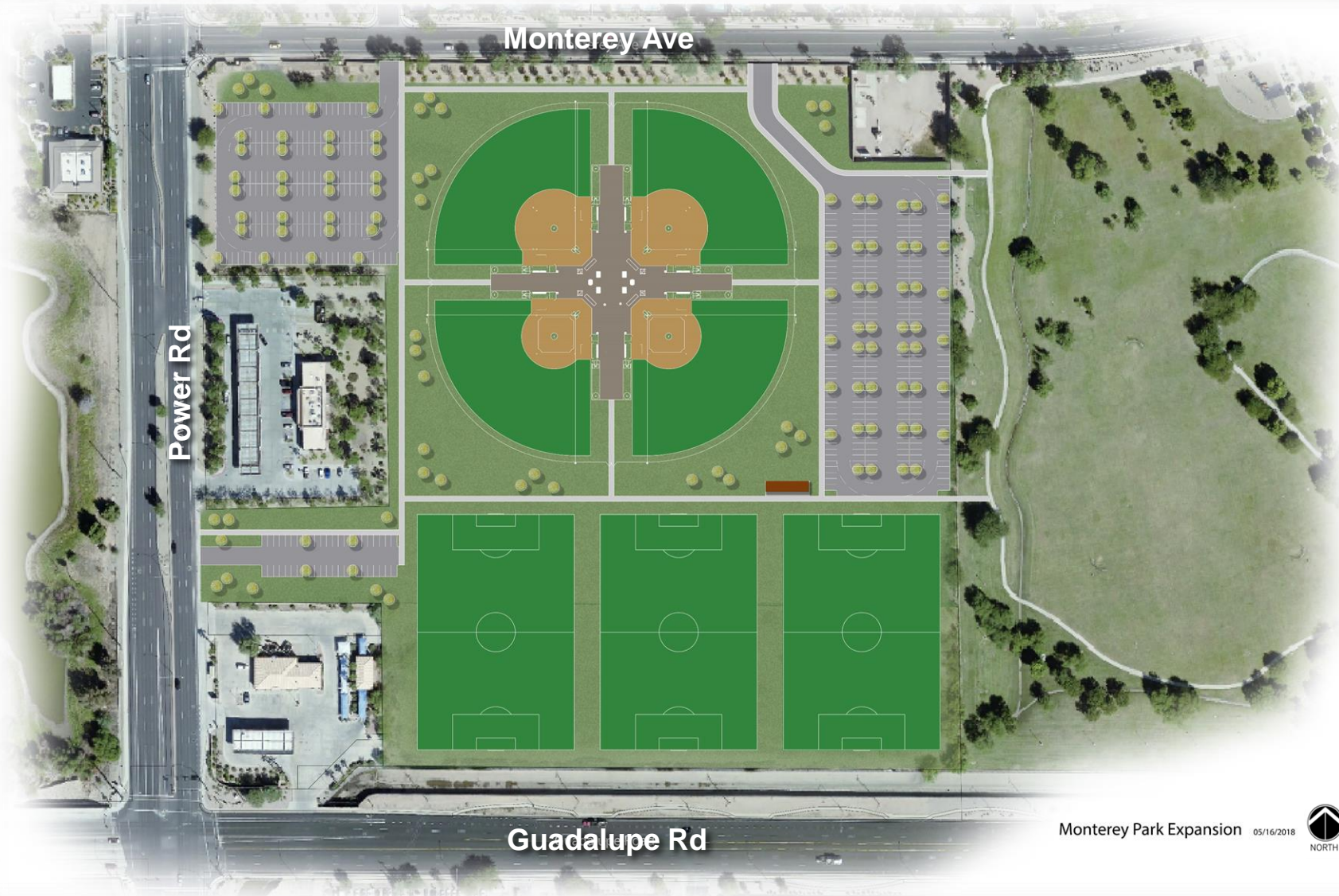
Parks & Cultural

ATHLETIC FIELDS

1. Monterey Park Athletic Fields
2. Crismon & Elliot Basin Athletic Fields
3. North Center Street Athletic Fields
4. Red Mountain – Community Athletic Fields
5. Mesa Plays – Tournament Athletic Fields
6. Red Mountain Youth Baseball/Softball Fields



Monterey Park Athletic Fields



- 19 acre city parcel
- 5 acre land acquisition
- 4 lighted youth baseball/softball fields
- 3 lighted soccer fields (240'x360')
- 420 parking spaces
- Restroom, storage, and offices
- Estimated cost \$12.3M

Monterey Park Expansion 05/16/2018



Crismon & Elliot Basin Athletic Fields



- 2 lighted soccer fields (240'x360')
- 2 drop in fields (goals, no lights)
- 120 parking spaces
- Estimated cost \$2.5M



North Center Street Athletic Fields



North Center Soccer Complex 04/23/2018



- 5.8 acre city parcel
- 18.6 acre land acquisition
- 6 lighted soccer fields (240' x 360')
- 360 parking spaces
- Restroom & storage
- Estimated cost \$14.2M

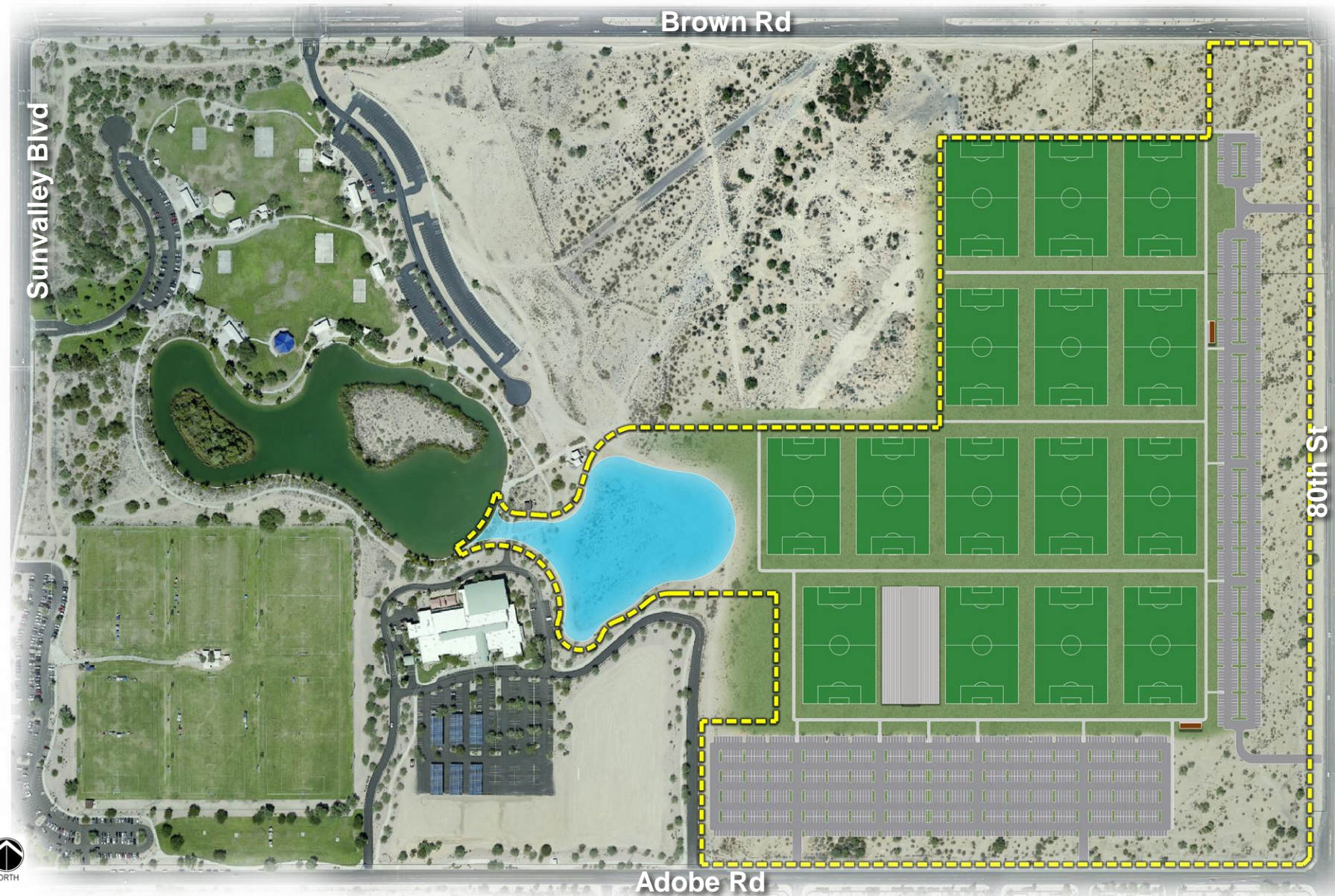


Red Mountain – Community Athletic Fields



- Located adjacent to Red Mountain Park
- 9 artificial turf soccer fields (225'x360')
- 960 Parking stalls
- 1 Restroom
- Estimated cost \$25.0M

Mesa Plays – Tournament Athletic Fields



- Located adjacent to Red Mountain Park
- 13 natural grass soccer fields (225'x360')
- 1 natural grass championship soccer field (225'x360')
- 1 artificial turf championship soccer field (225'x360')
- 1,620 parking stalls
- 2 Restrooms
- Estimated cost \$30.0M



Mesa Plays/Red Mountain - Athletic Fields



- Community soccer fields estimated cost \$25.0M
- Tournament soccer fields estimated cost \$30.0M
- Proposed location for future fieldhouse



Red Mountain Youth Baseball/Softball Fields



- 4 lighted youth baseball/softball fields
- 240 parking stalls
- 1 restroom
- Estimated cost \$7.2M

Parks & Cultural

PARK AMENITIES

1. City Center Plaza
2. Dog Parks (Carriage Lane Park & Countryside Park)



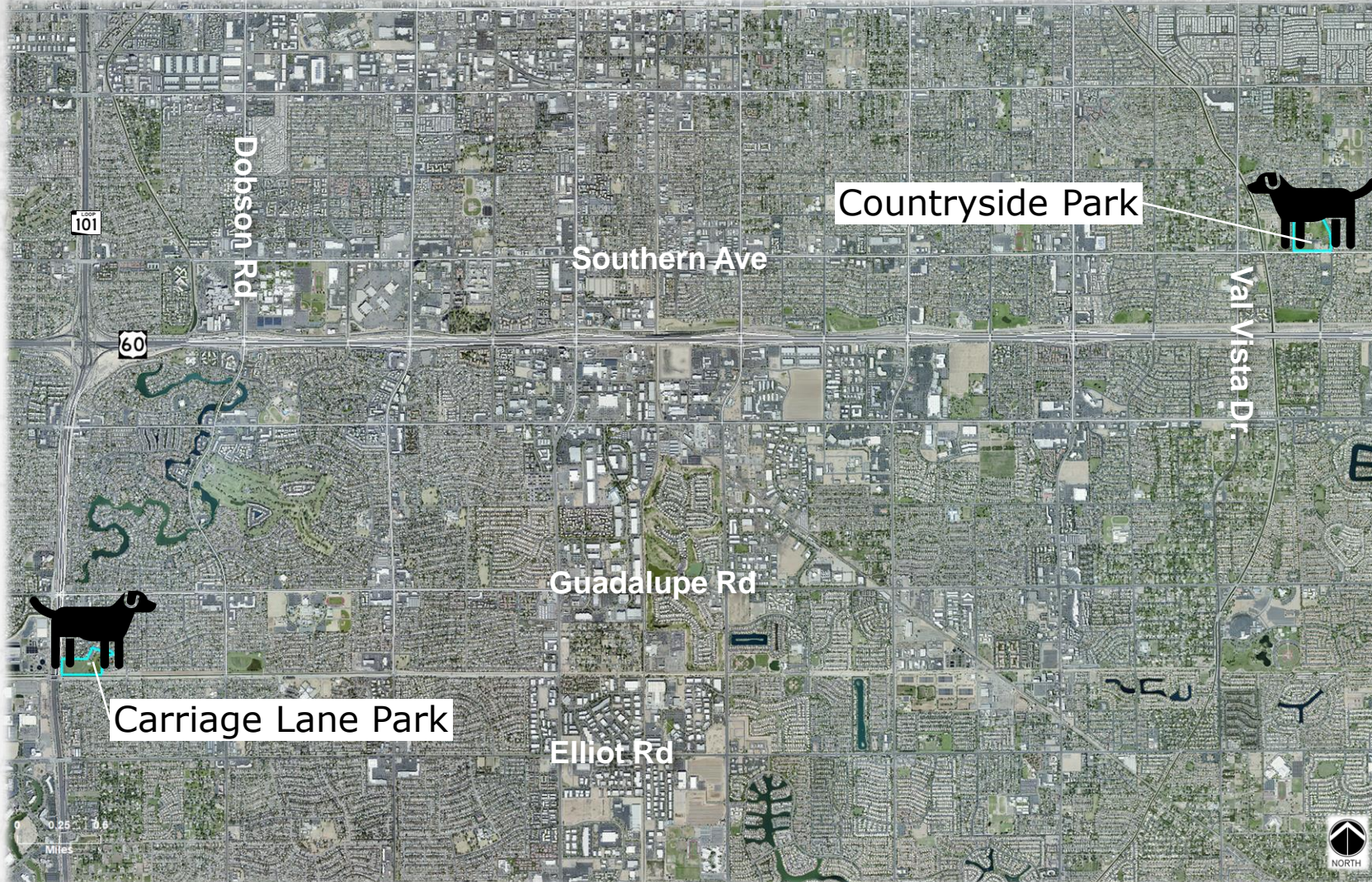
City Center Plaza



- 2 acre public plaza
- Proposed site amenities include a water feature, event lawn, restroom, landscaping, and park furniture
- Estimated cost \$5.3M

Dog Parks

Carriage Lane Park & Countryside Park



- 3.5 acre new dog park at Carriage Lane Park
- 1.5 acre expansion at Countryside Park
- Estimated cost \$1.1M



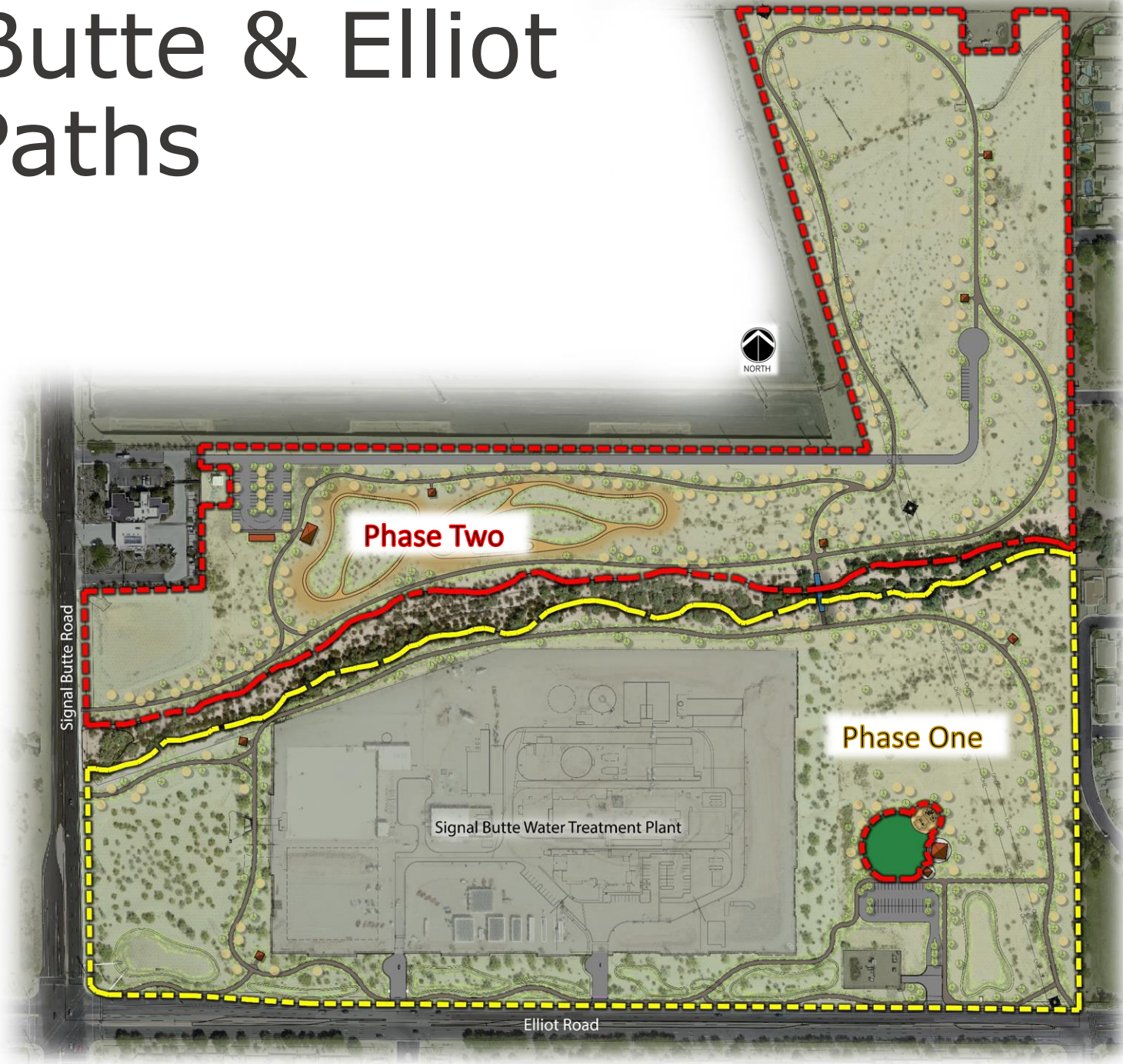
Parks & Cultural

PATHS

1. Signal Butte & Elliot Park – Paths
2. Lehi Crossing Shared Use Path (McDowell Rd. to Loop 202)
3. Eastern Canal Shared Use Path (Brown Rd. to Broadway Rd.)



Signal Butte & Elliot Park - Paths



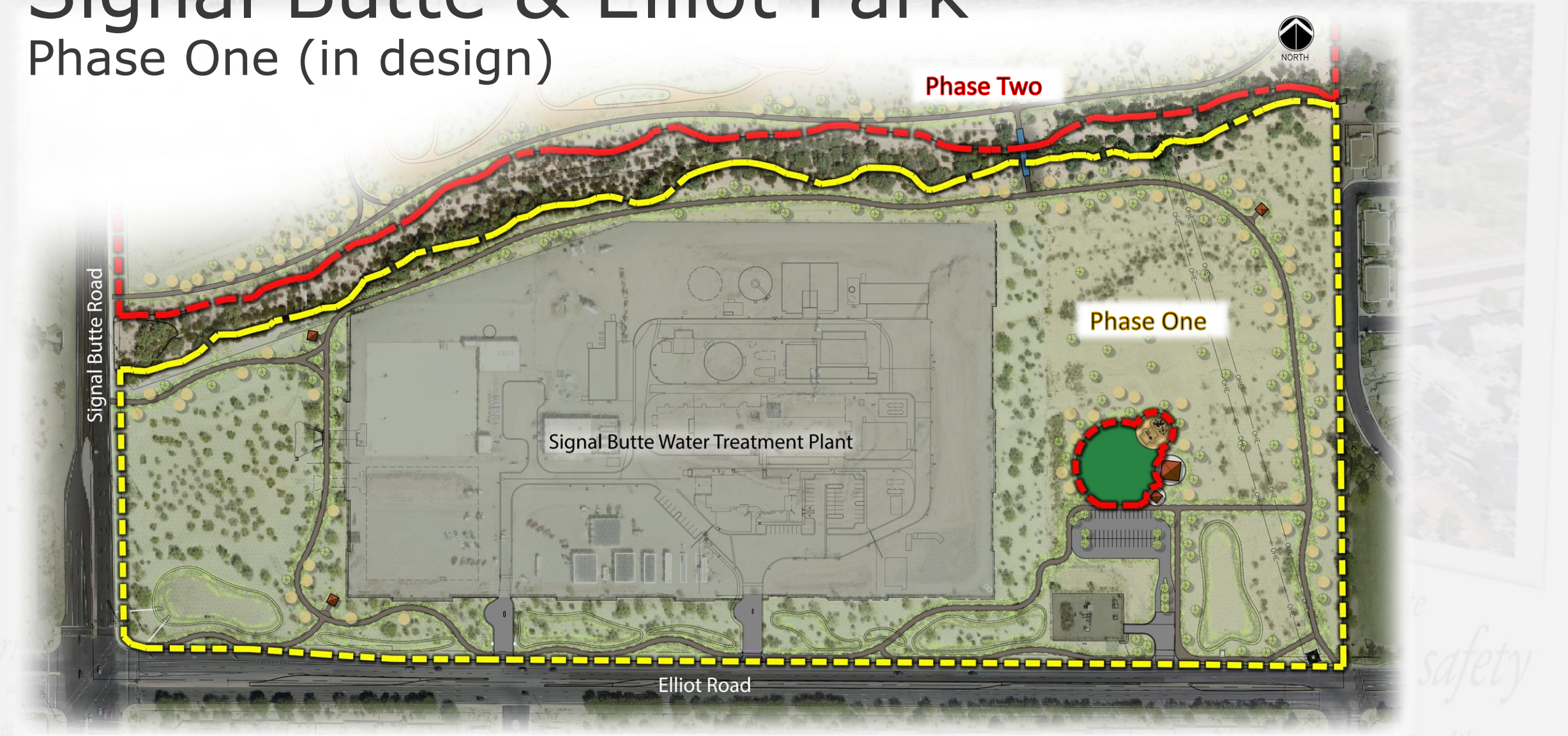
parks & rec.
river view
hobson ranch
eastern canal
evidence facility
monterey
unplanned
shared use
soccer
idea museum

signal butte
public safety
parks & rec.
library
federal building



Signal Butte & Elliot Park

Phase One (in design)



- Park site amenities include pathways, 4 ramadas, restroom, parking area, and landscaping



Signal Butte & Elliot Park

Phase Two

- 46.3 acres
- Park improvements primarily north side of Siphon Draw Wash
- Bridge over wash
- Playground and turf area south of wash
- Estimated cost \$5.0M



Lehi Crossing Shared Use Path – Phase I

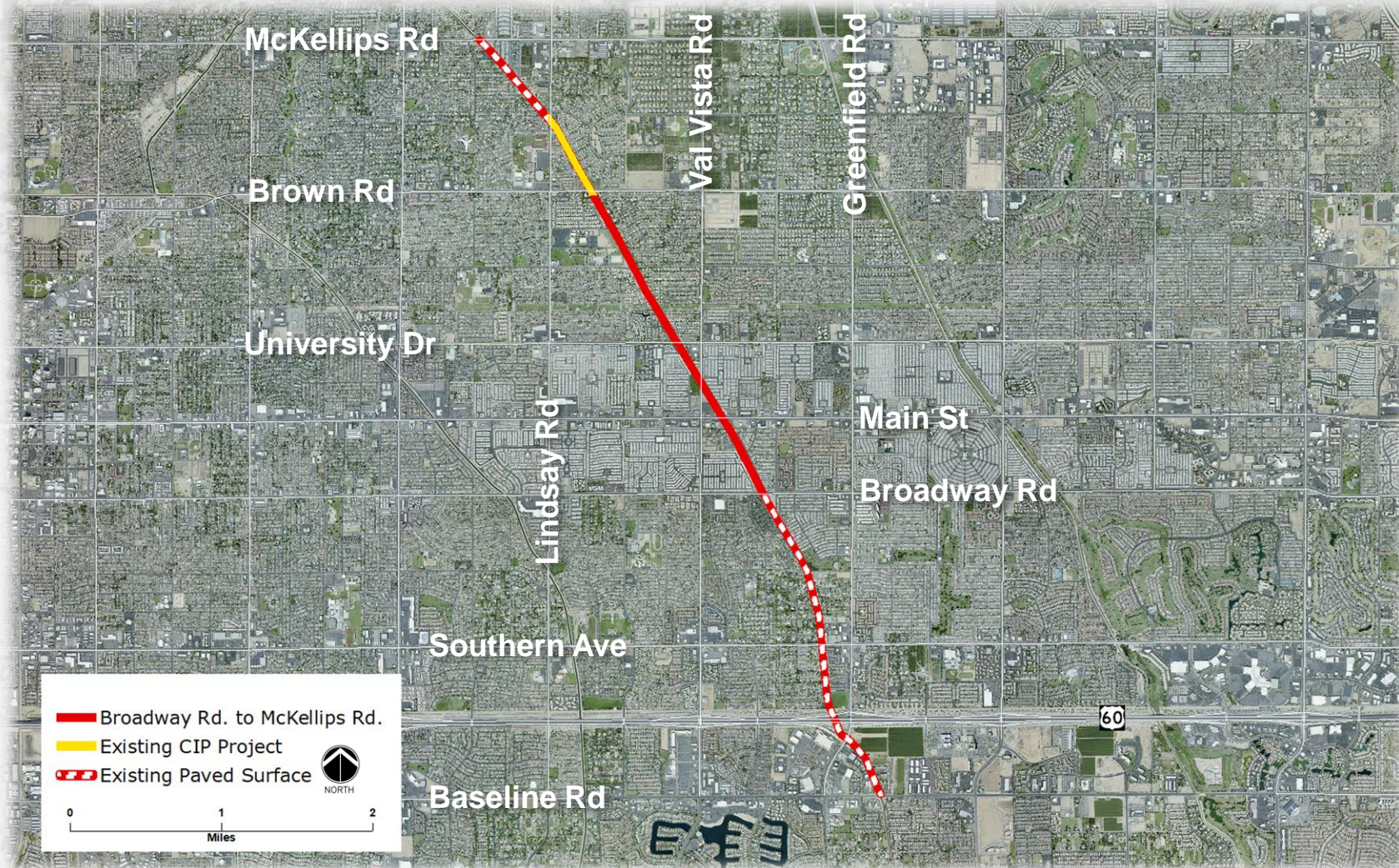
McDowell Rd. to Loop 202



- 2.2 mile path
- North side of South Canal
- McDowell Rd trailhead (with parking) to new trailhead at Val Vista and 202 (with parking)
- Estimated cost \$5.6M

Eastern Canal Shared Use Path

Brown Rd. to Broadway Rd.



- 2.3 mile path
- West side of Eastern Canal
- Estimated cost \$5.1M (includes 5 signalized pedestrian crossings)
- Total overall mileage, including future phases = 5.75 miles



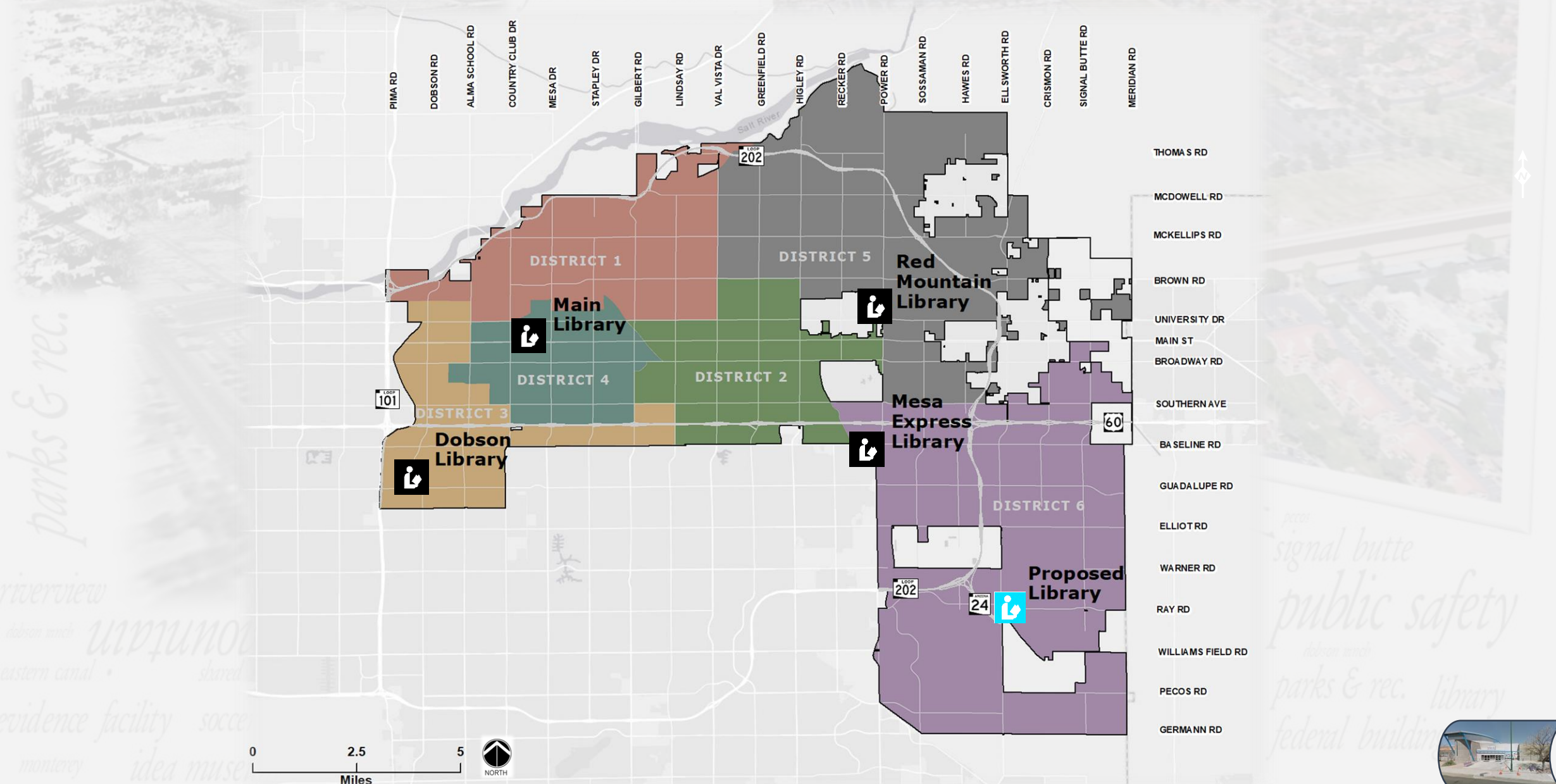
Parks & Cultural

CULTURAL

1. Southeast Library at Queen Creek High School (Mesa)
2. Dobson Library & Main Library Improvements
3. Federal Building Renovation
4. i.d.e.a. Museum (Design/Phase One)



City of Mesa Library Location Map



Southeast Mesa Library



- 23,000 SF (35,000 SF preferred)
- On campus of Queen Creek District High School (Mesa)
- Located in Eastmark
- Estimated cost \$16.8M



Dobson Library Improvements



- New programming space
- Façade improvements
- Estimated cost \$1.5M

Main Library Improvements



- New programming space
- Estimated cost \$1.5M

idea museum
signal butte
public safety
parks & rec. library
federal building

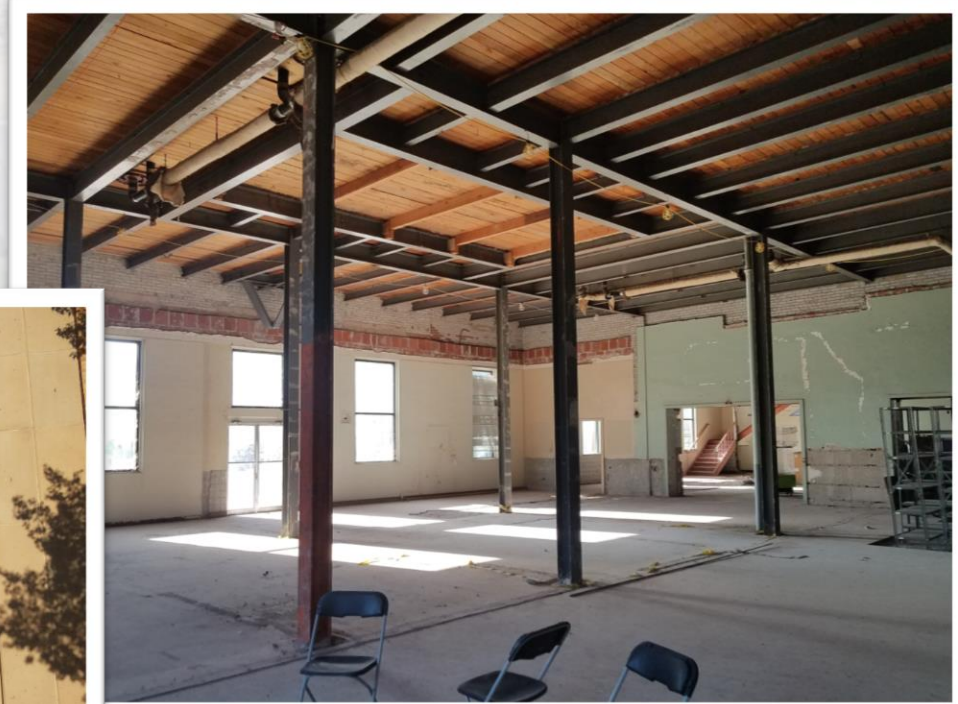


Federal Building Renovation



- 30,000 SF
- Remaining 2012 Parks Bond funding = \$4.3M
- \$700k expended to date on demolition, abatement, and design

Federal Building Renovation



- Bring building systems up to standard
- Develop an open shell space for public use
- Estimated additional cost \$3.2M (2018 bond funding)



i.d.e.a. Museum Phase One



- Artville Expansion / Texturescape play area
- Office relocation
- Exterior improvements
- Building system improvements
- Estimated cost \$2.4M



PARKS & CULTURAL

SUMMARY

- 1. Athletic Fields \$91.2M
- 2. Park Amenities \$ 6.4M
- 3. Paths \$15.7M
- 4. Cultural \$25.4M

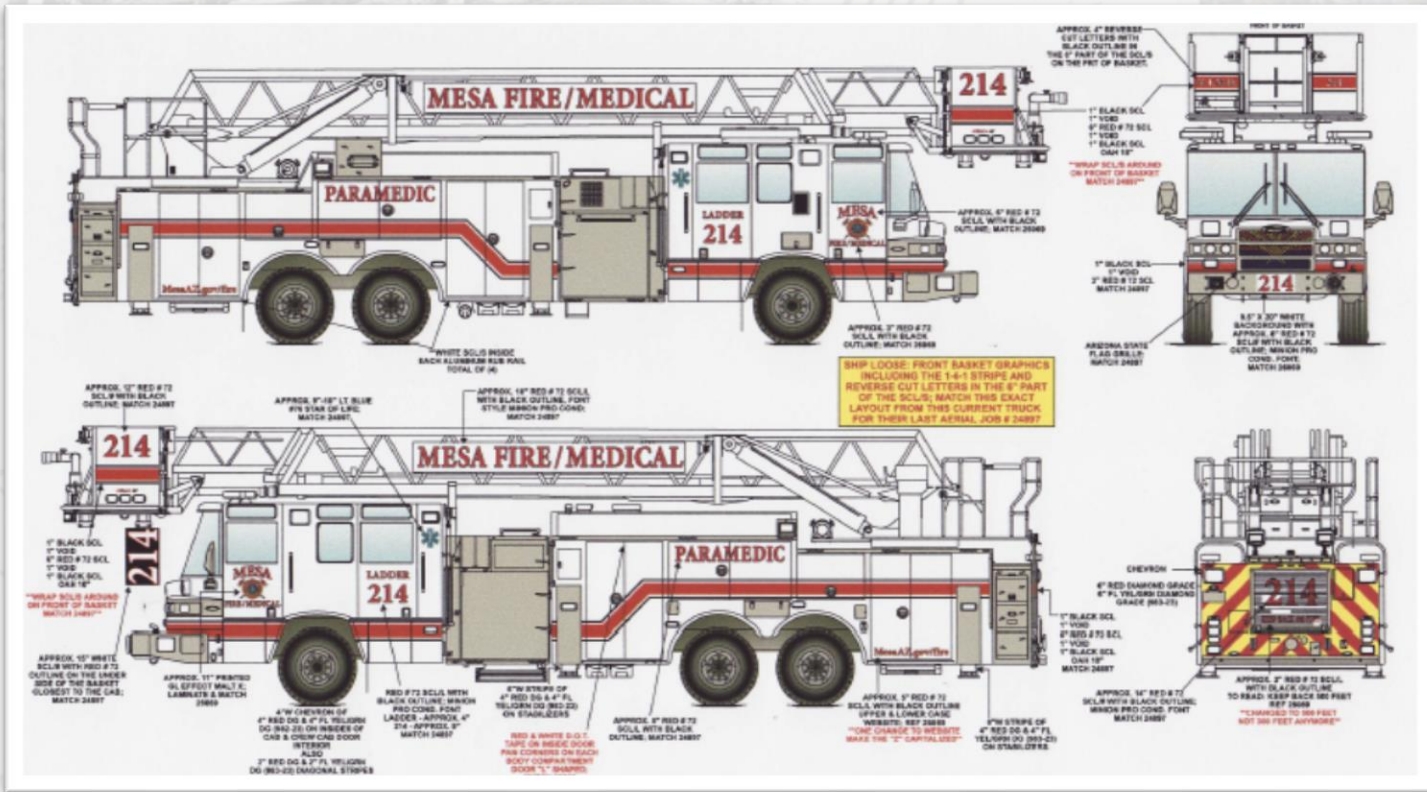
\$138.7M

PUBLIC SAFETY

1. Fire Apparatus
2. Fire Station 221/Eastmark
3. NE Fire Station 222
4. NE Police Station
5. Evidence Facility
6. Public Safety Fiber



Fire Apparatus Replacement



- FY 18/19
 - 4 pumpers, 1 ladder
- FY 19/20
 - 1 pumper, 2 ladder, 1 ARFF Unit
- FY 20/21
 - 3 pumpers, 1 Air/Light Unit
- FY 21/22
 - 1 Tanker, 3 Rescue Units
- Estimated cost \$24.7M



Fire Station 221 (Eastmark)

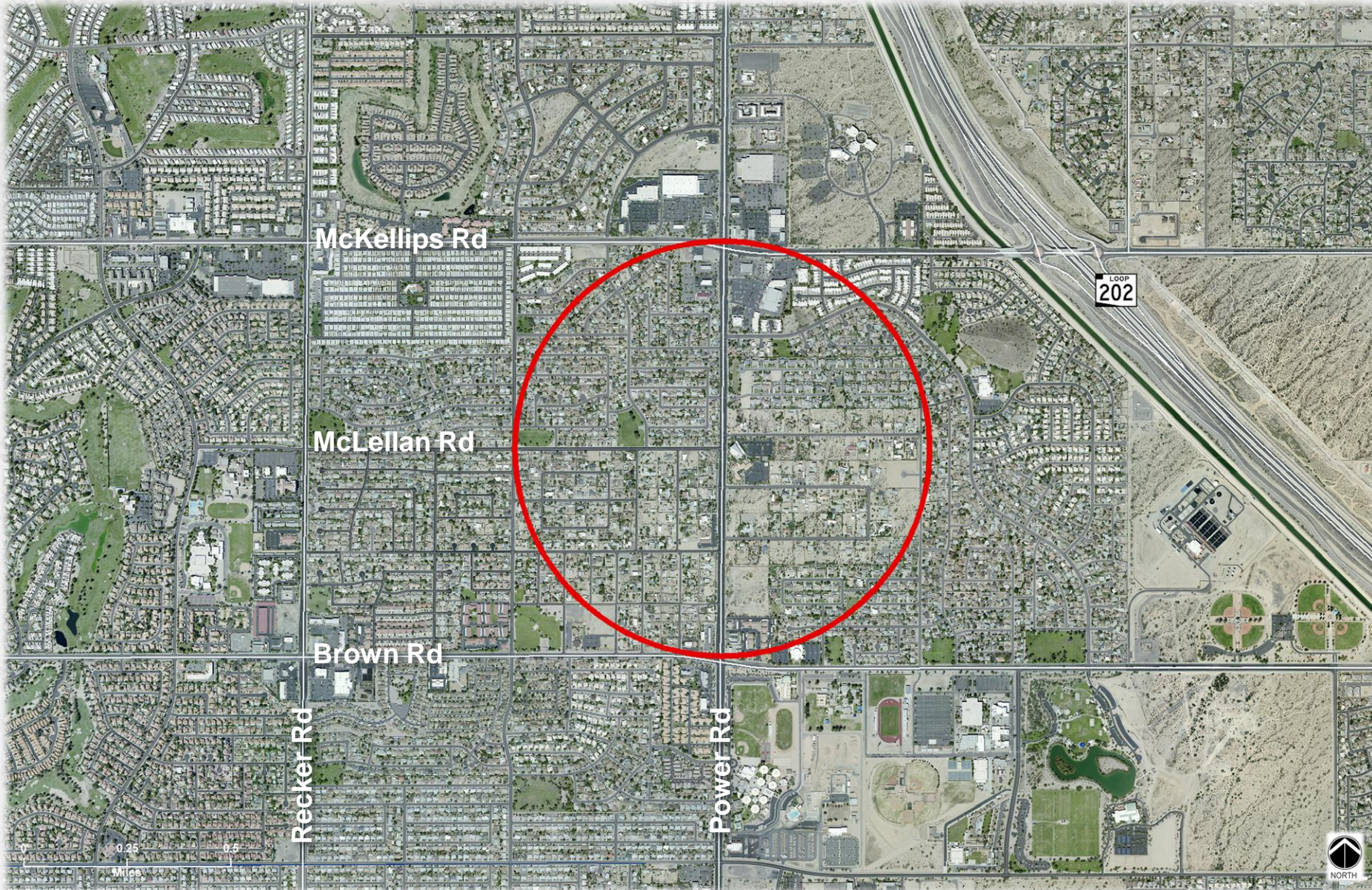


○ 15,000 SF

○ Estimated cost
\$5.1M



Fire Station 222 (Northeast)



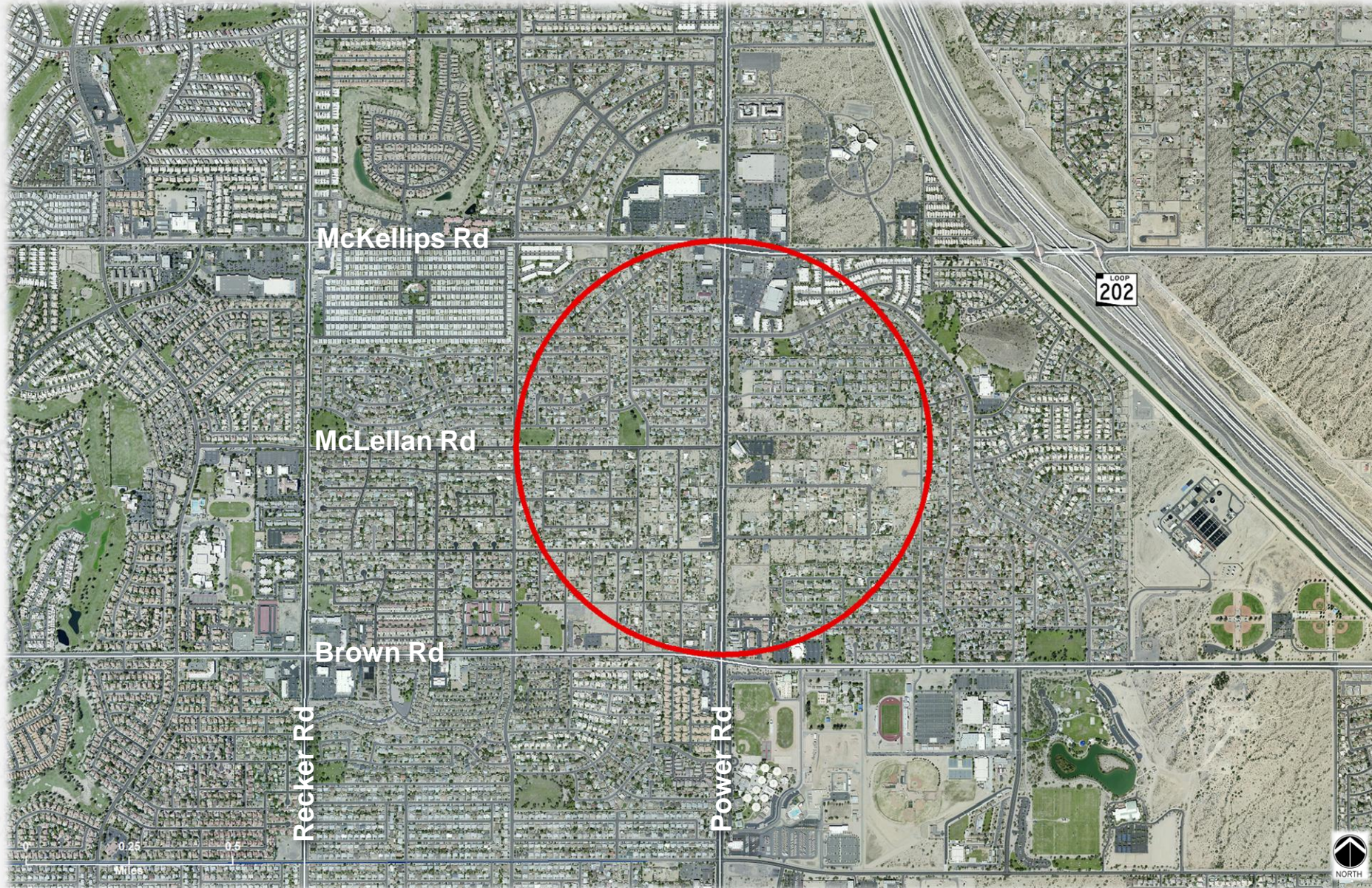
○ 17,000 SF

○ Opportunity to combine with Police Substation

○ Estimated cost \$12.0M



Police Substation (Northeast)



○ 32,000 SF

○ Opportunity to combine with Fire Station 222

○ Estimated cost \$25.0M



Evidence Facility



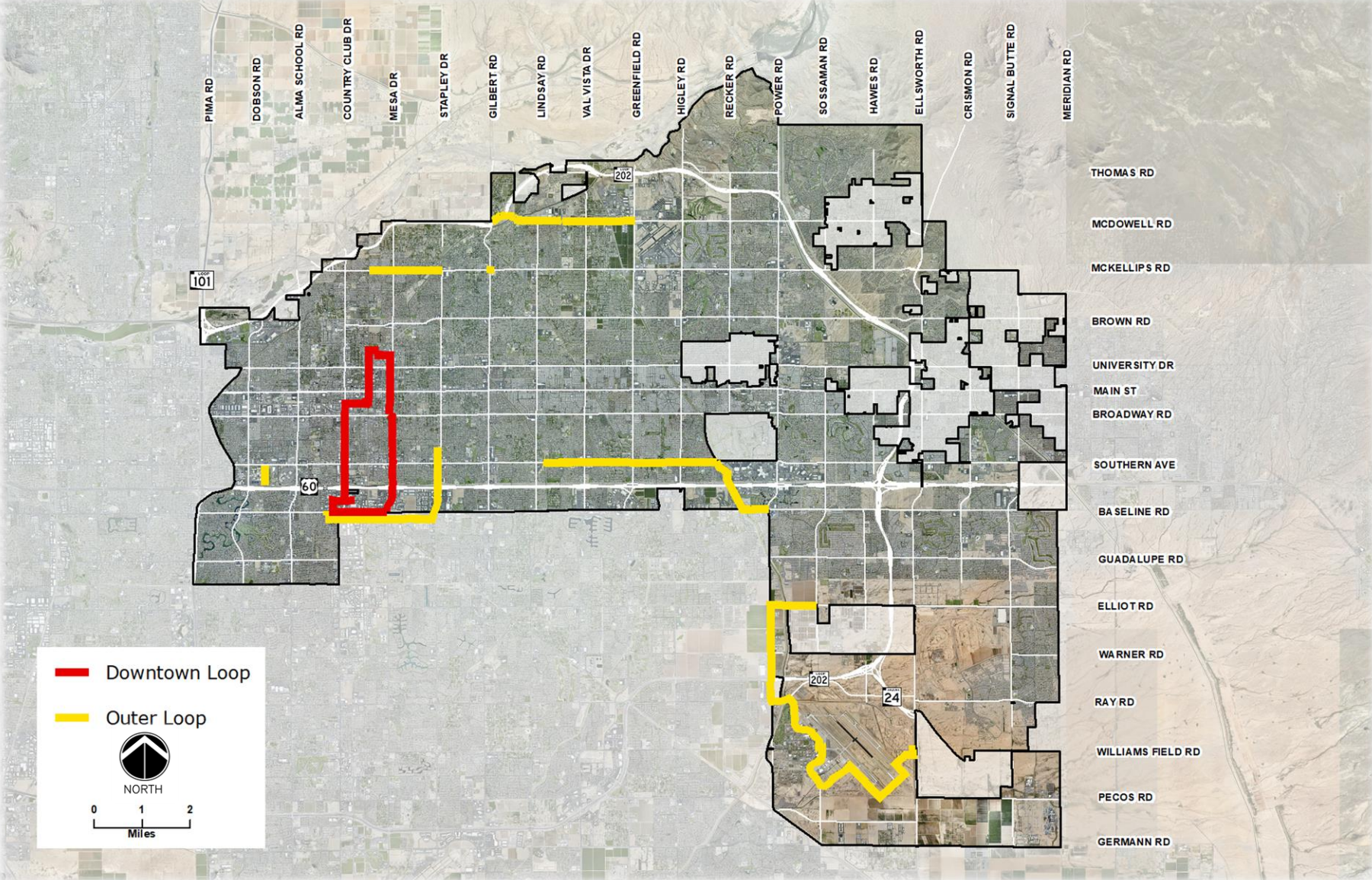
○ 30,000 SF

○ Evidence processing/storage facility

○ Estimated cost \$10.0M



Public Safety Fiber



- Complete downtown loop
- Improve network infrastructure reliability & resiliency
- Estimated cost \$10.0M



PUBLIC SAFETY

SUMMARY

1.	Fire Apparatus	\$24.7M
2.	Fire Station 221/Eastmark	\$ 5.1M
3.	NE Fire Station 222	\$12.0M
4.	NE Police Station	\$25.0M
5.	Evidence Facility	\$10.0M
6.	Public Safety Fiber	\$10.0M
		<hr/>
		\$86.8M



SUMMARY

Parks & Cultural

\$138.7M

Public Safety

\$ 86.8M

\$225.5M