

# Southeast Mesa Land Use and Transportation Plan

*City of Mesa*



November 7, 2018

Community Meeting #1

**Kimley»»Horn**

**Matrix**  
DESIGN GROUP

**RCG**  
Rounds Consulting Group, Inc.  
Economic and Policy Analysts



# Project Team

## City Project Manager

- Al Zubi, P.E. PTOE, Transportation Department

## Project Lead

- Michael Grandy, P.E. Kimley-Horn, Project Manager, Transportation

## Project Support

- Felipe Zubia, AICP, Matrix, Land Use
- Jim Rounds, Rounds Consulting, Economics

# Agenda

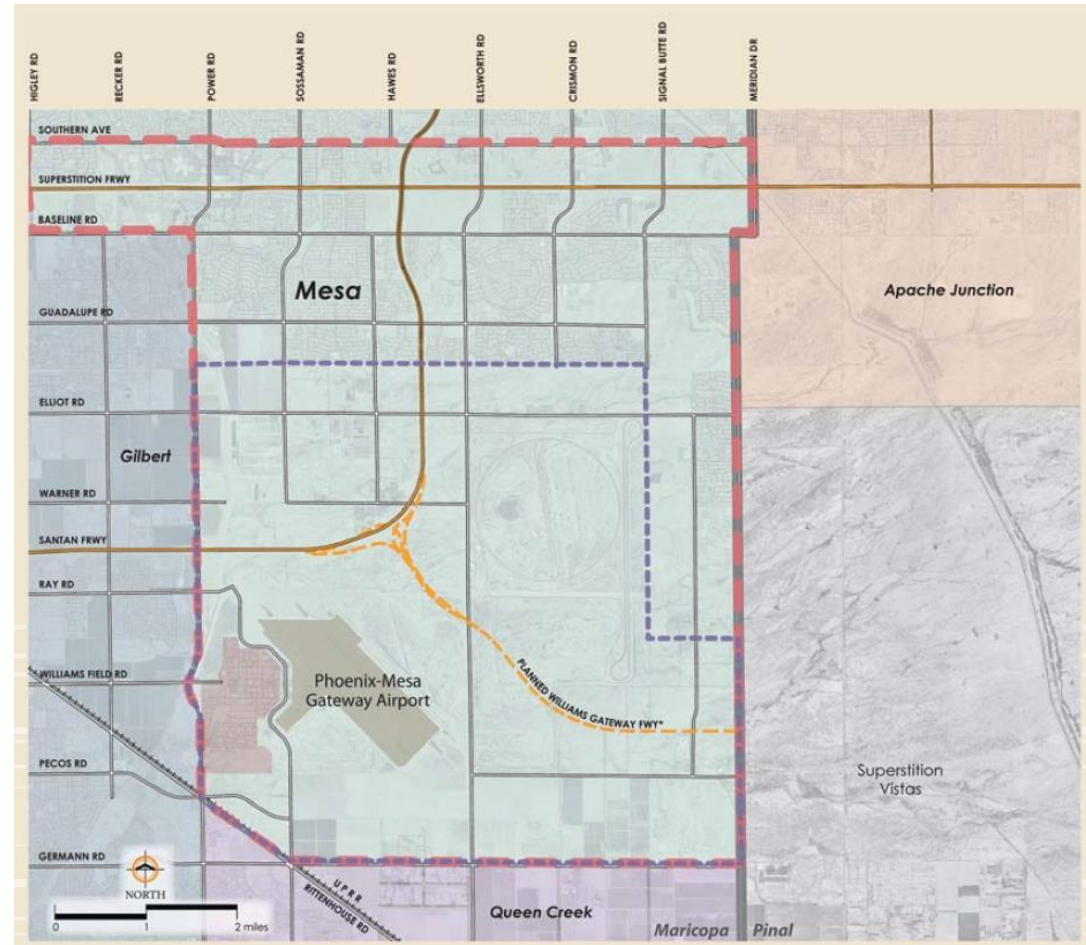
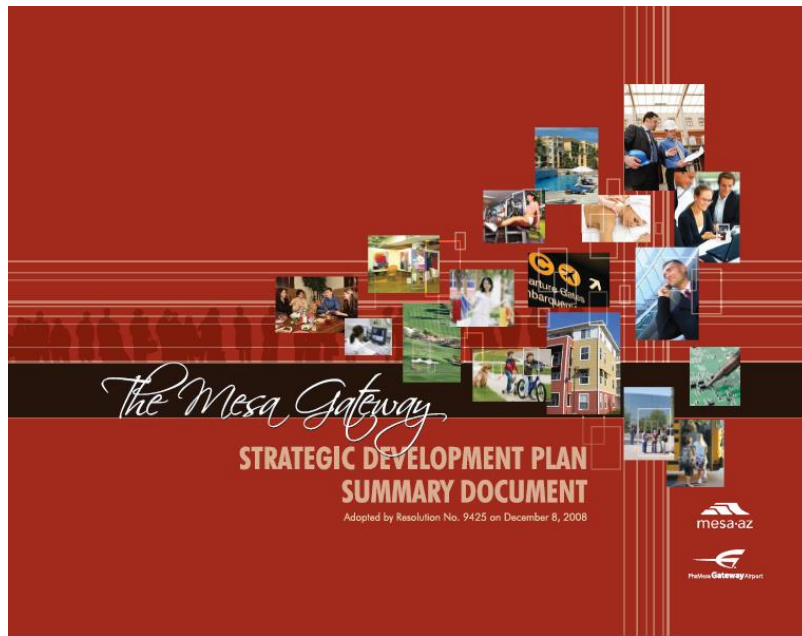
1. Project Background
2. Project Details
  - Need
  - Scope
  - Schedule
3. Project Status
4. Interactive Exercises

# Project Background

# Prior 2008 Study



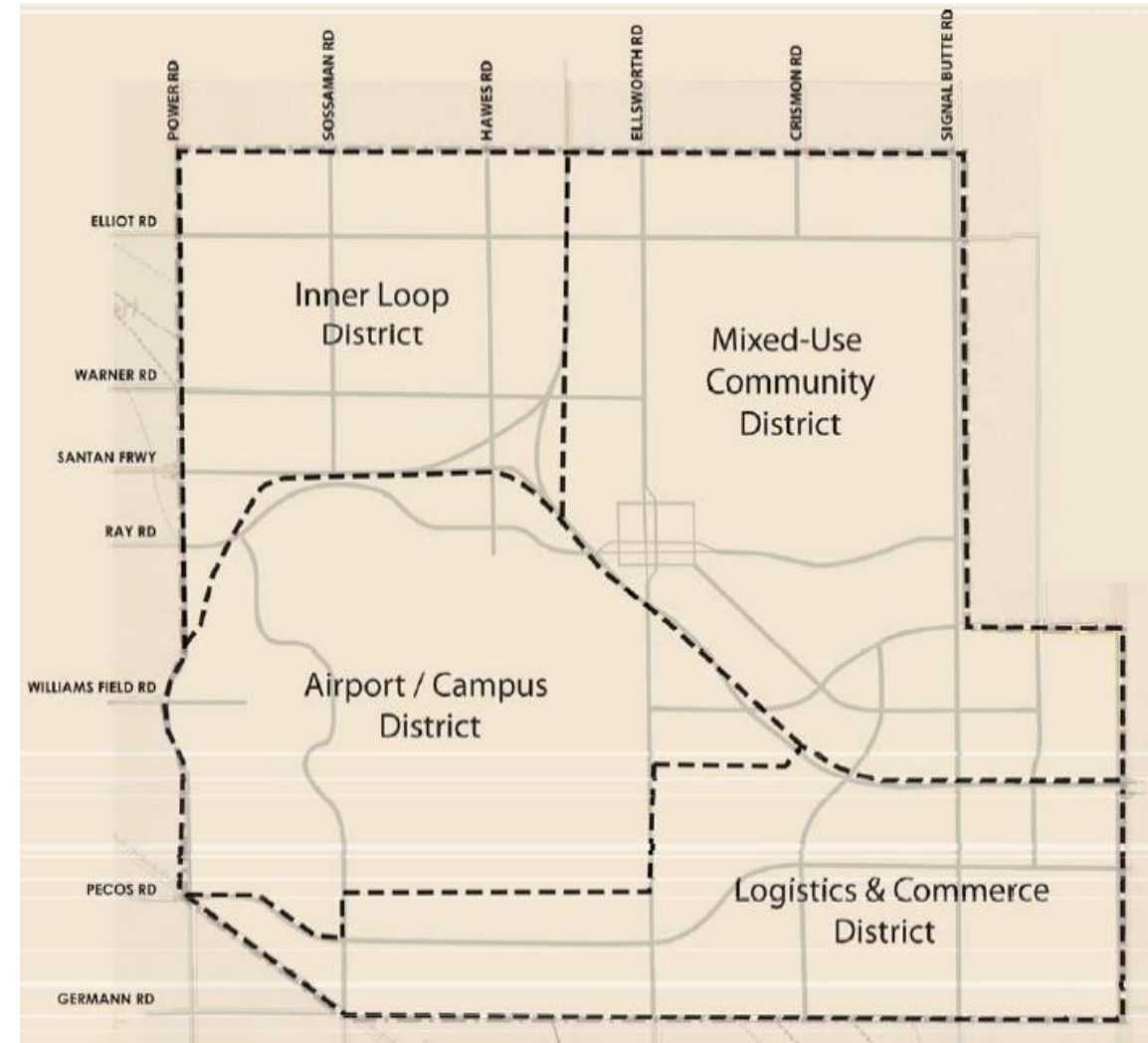
- Mesa Gateway Strategic Development Plan
  - Adopted Dec. 2008



# 2008 Districts & Target Markets



- Sub-area Districts in Less-Developed Southern Part of Study Area
  - Inner Loop
  - Mixed Use
  - Airport/Campus
  - Logistics & Commerce
- Identified Target Markets
  - Aerospace
  - Airline Services
  - High Tech
  - Healthcare

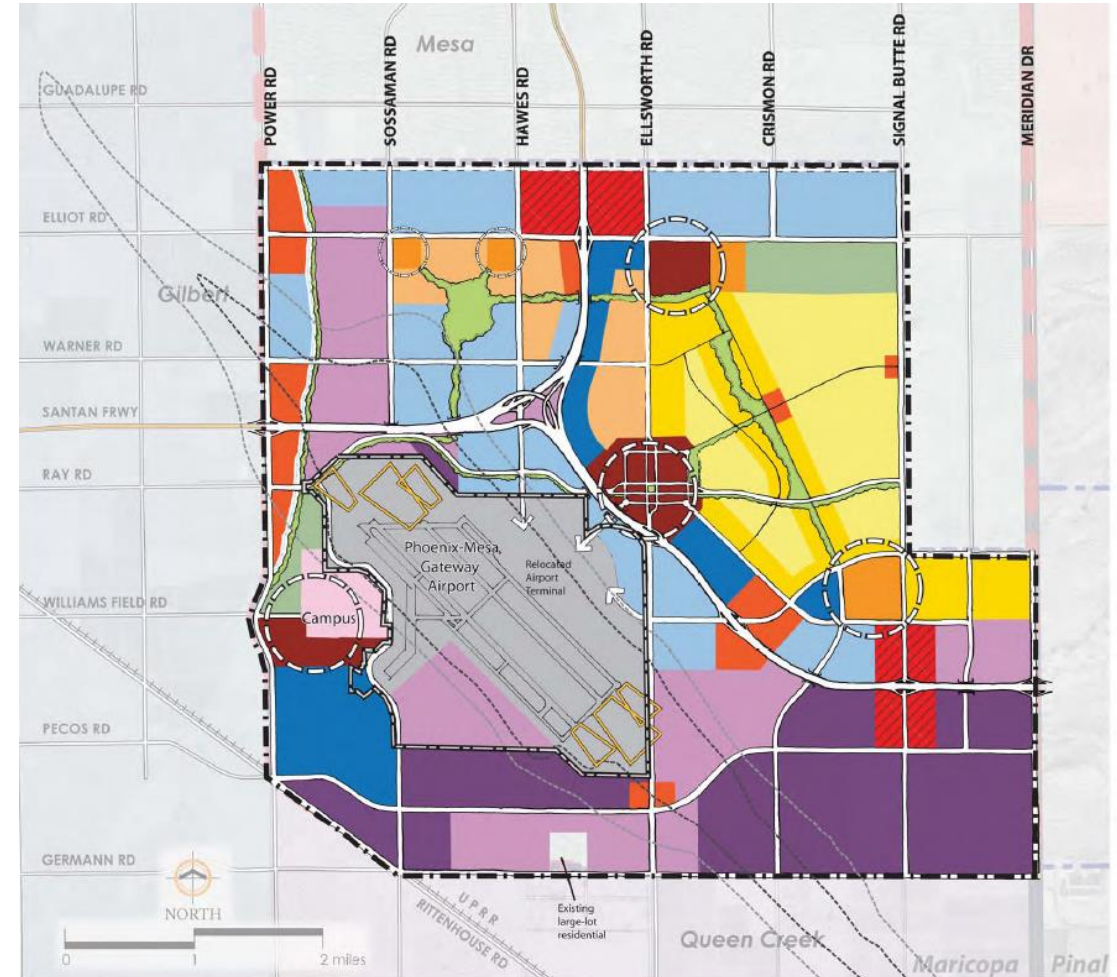




# 2008 Preferred Concept Land Uses



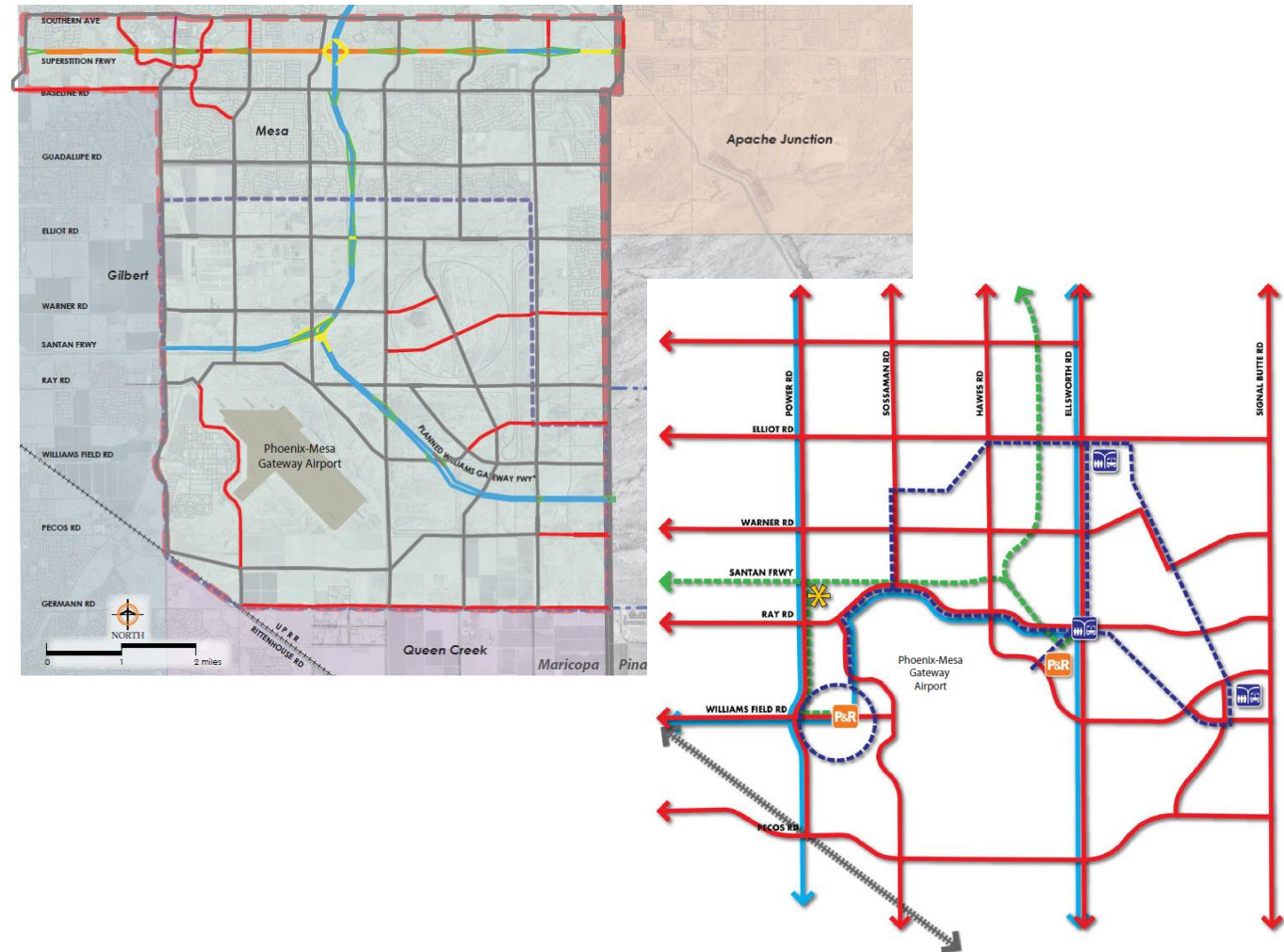
- Identified Land Use Assumptions
  - Industrial South of Airport
  - Intense Land Uses along SR 24
  - Mixed Use Centers



# 2008 Transportation Strategies



- Identified Transportation Strategies
  - High Capacity Boulevards
  - Connector Roads
  - Transit
  - Shared Use Paths
  - Bike Lanes
  - Potential Future Commuter Rail



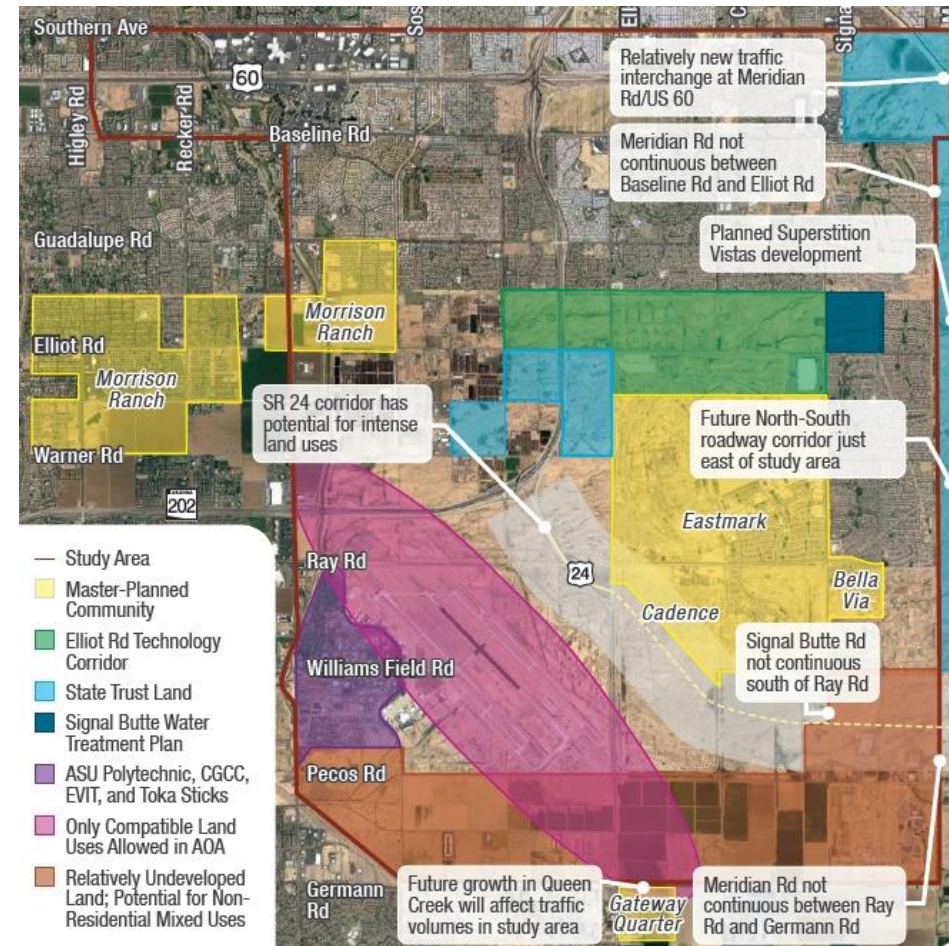


# Project Details

# Need for Southeast Mesa LUTP



- **Land Development**
  - Few Remaining Large Undeveloped Parcels
  - Changing Markets & Trends
  - Updated Land Use Assumptions
- **Road Project Prioritization**
  - SR 24 Extension
  - Which Roads to Build First?
  - How Many Lanes are Needed?



# Project Scope

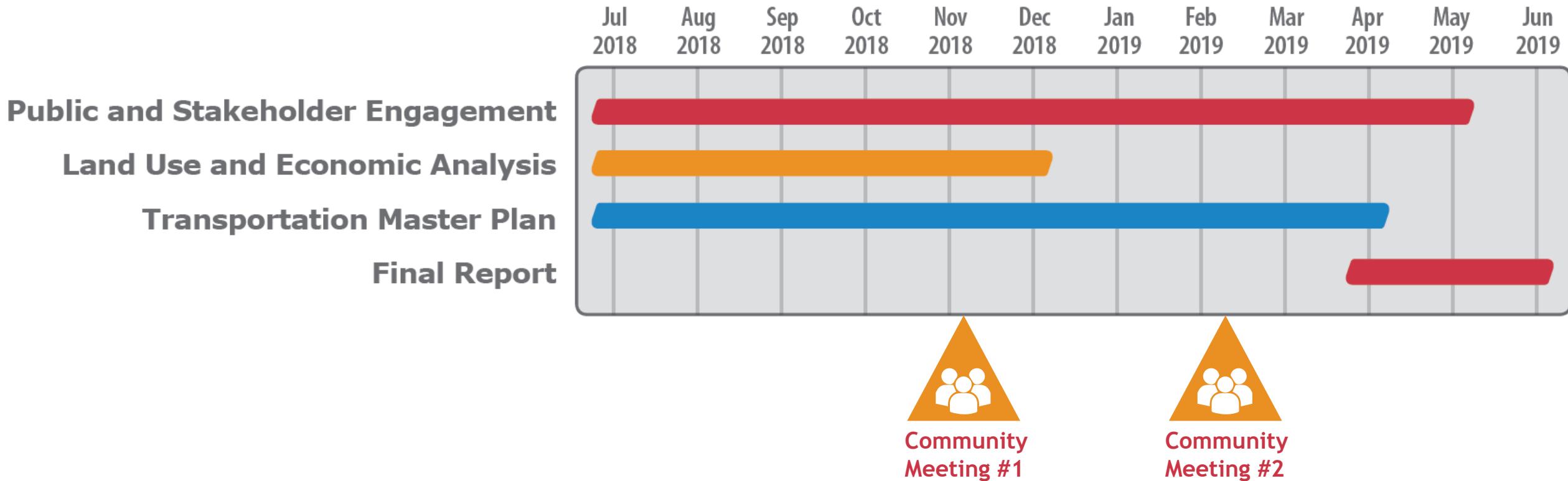


- **Existing Conditions Update**
  - Market Analysis
  - Land Use Update
  - Transportation Update
- **Public Engagement**
  - Community Involvement Plan
  - Stakeholders
  - Workshops
  - Council, Committee Board updates
- **Plan Updates**
  - Vision, Goals, and Policies
  - Infrastructure Programming and Prioritization



[mesaaz.gov/SEMesaPlan](http://mesaaz.gov/SEMesaPlan)

# Project Schedule



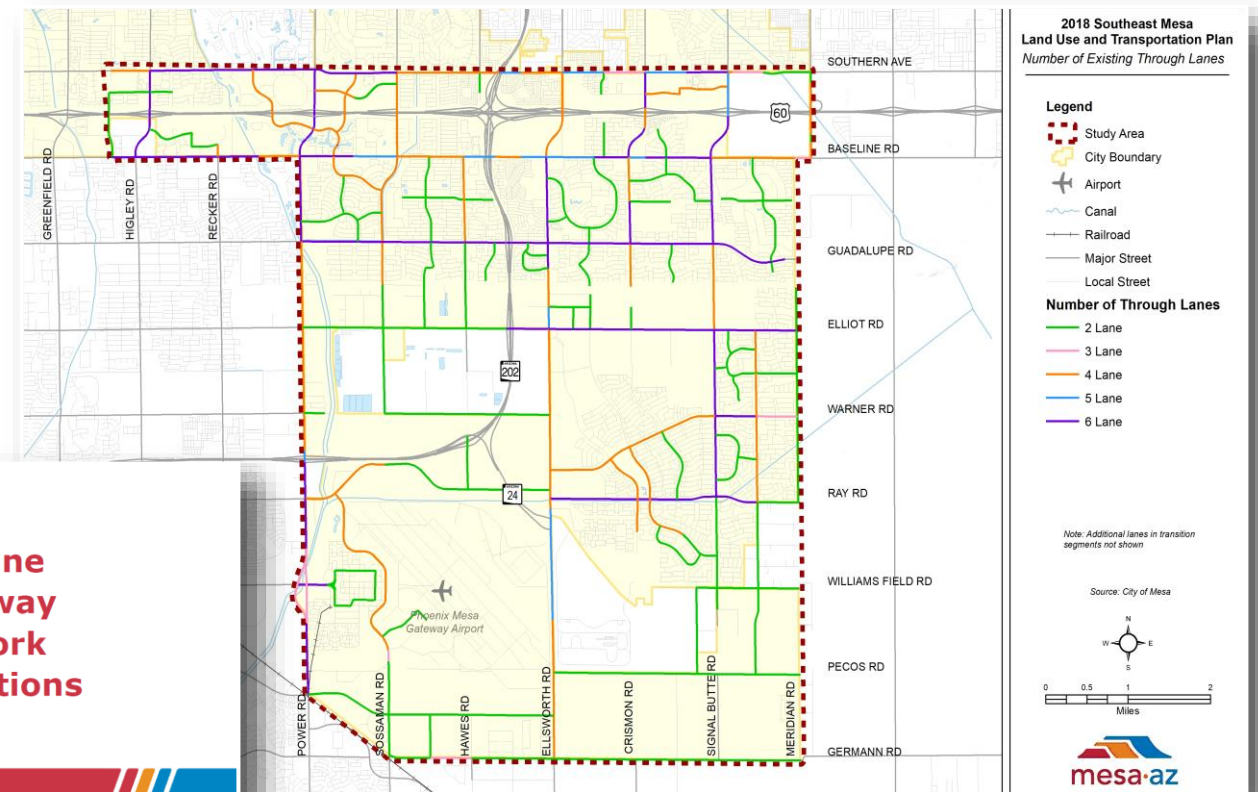
# Project Status





## Roadway Network Conditions

- Describes the existing and planned roadway network
  - City of Mesa 2019 - 2023 CIP
  - MAG 2018 - 2022 TIP



### Baseline Roadway Network Conditions

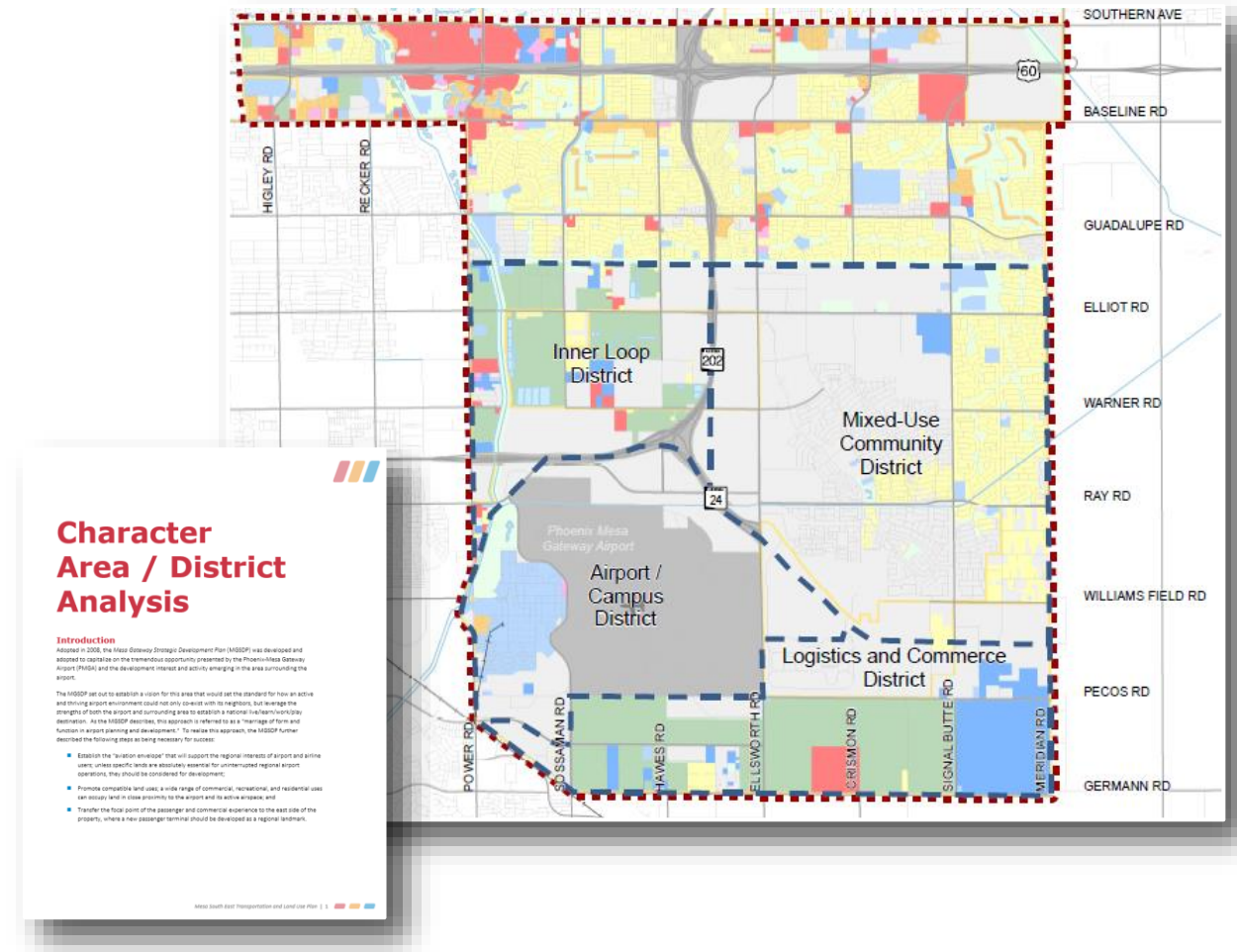
Southeast Mesa Land Use and Transportation Plan  
October 2018 - DRAFT



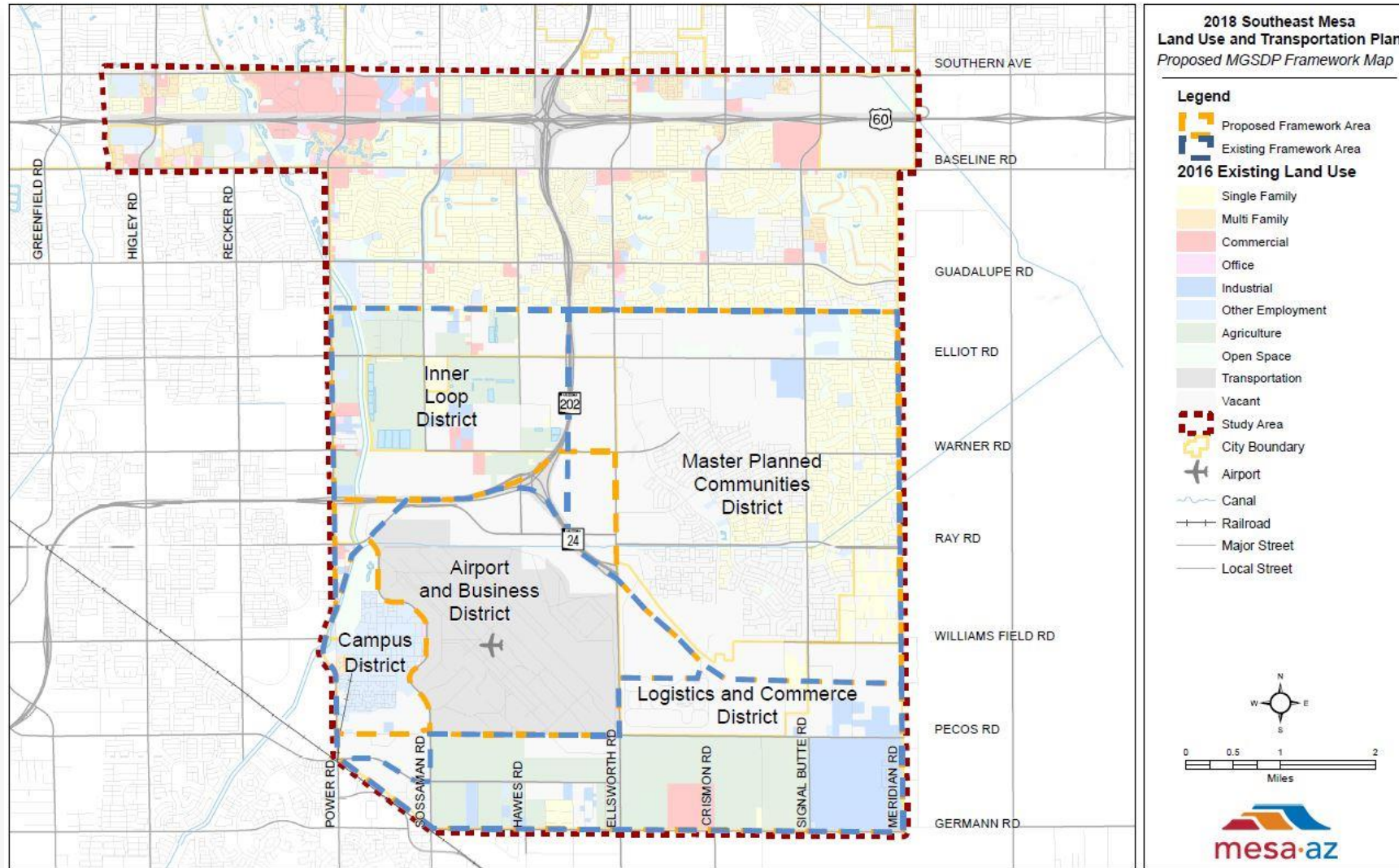


## Framework Districts in 2008 Plan

- Created to promote a live/work/learn/play destination by:
  - Ensuring compatibility
  - Supporting growth in education campus
  - Leveraging economic development opportunities
- Evaluated Framework Districts and identified need for refinements



# Proposed Update to Framework Districts





# Interactive Exercises

# Interactive Participation



## Instructions

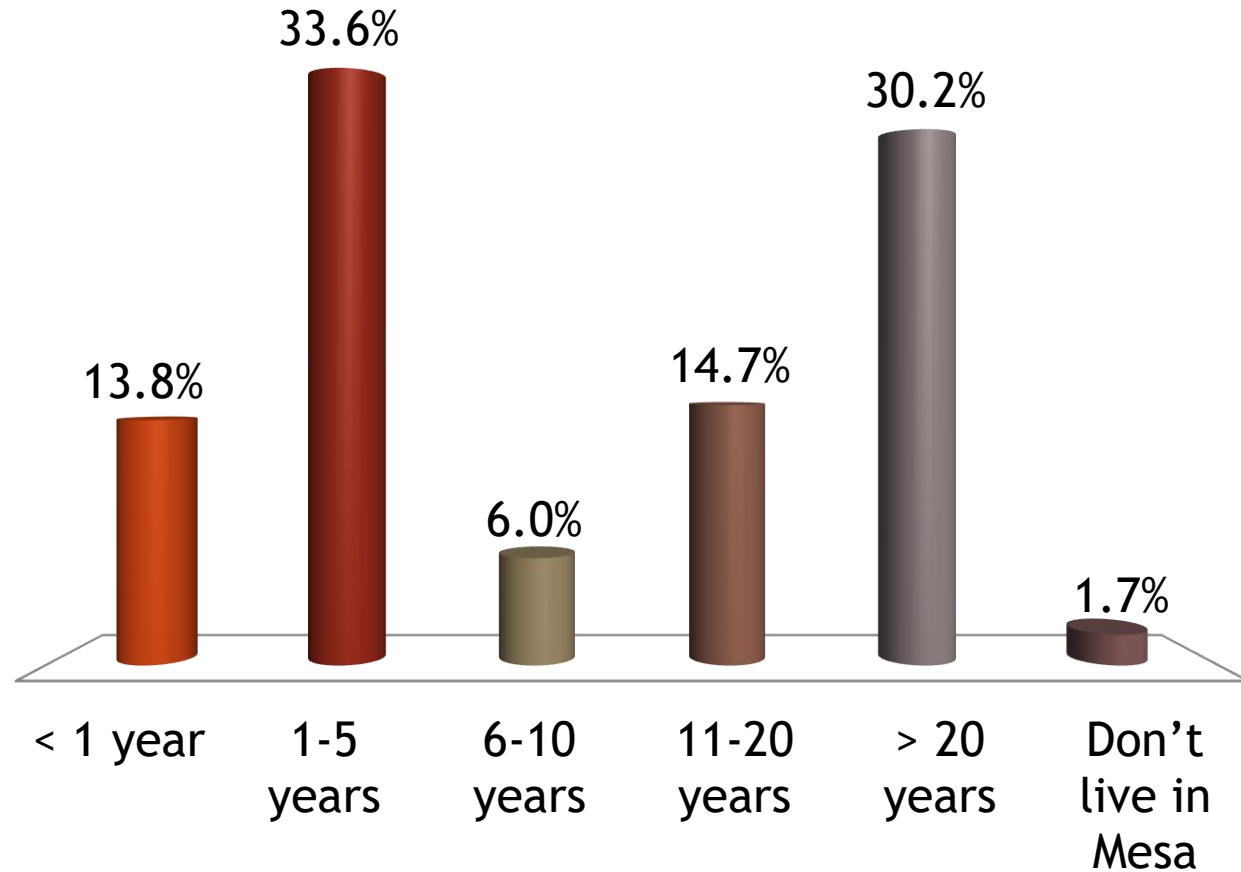
1. Presenter will announce polling is open.
2. Press the number / letter that corresponds with the answer you wish to select.
3. Change your mind? Just click the right one. Your last push will count.
4. Presenter will close the polling and you will see results from all participants.





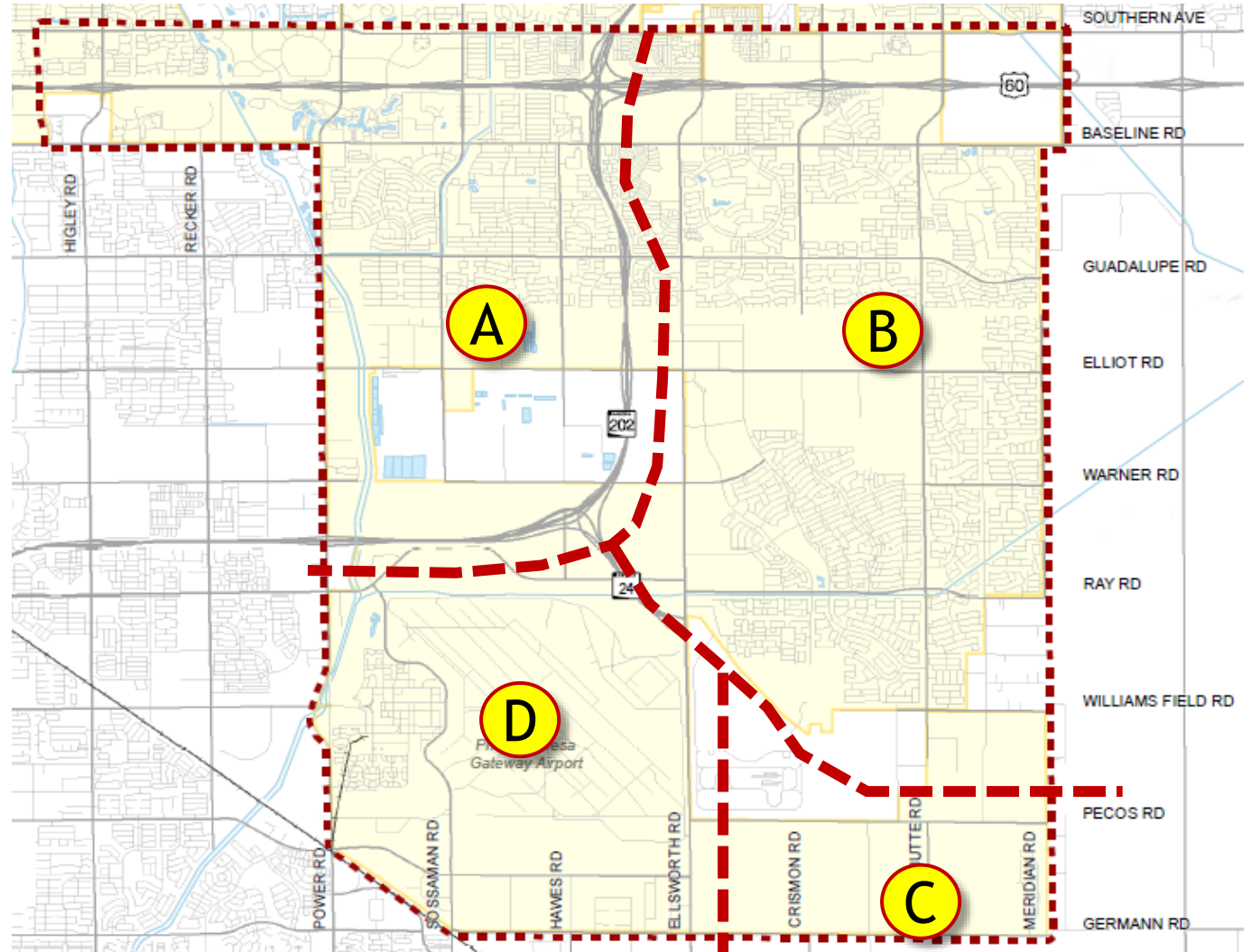
# Q1. How long have you lived in Mesa?

- A. < 1 year
- B. 1-5 years
- C. 6-10 years
- D. 11-20 years
- E. > 20 years
- F. Don't live in Mesa

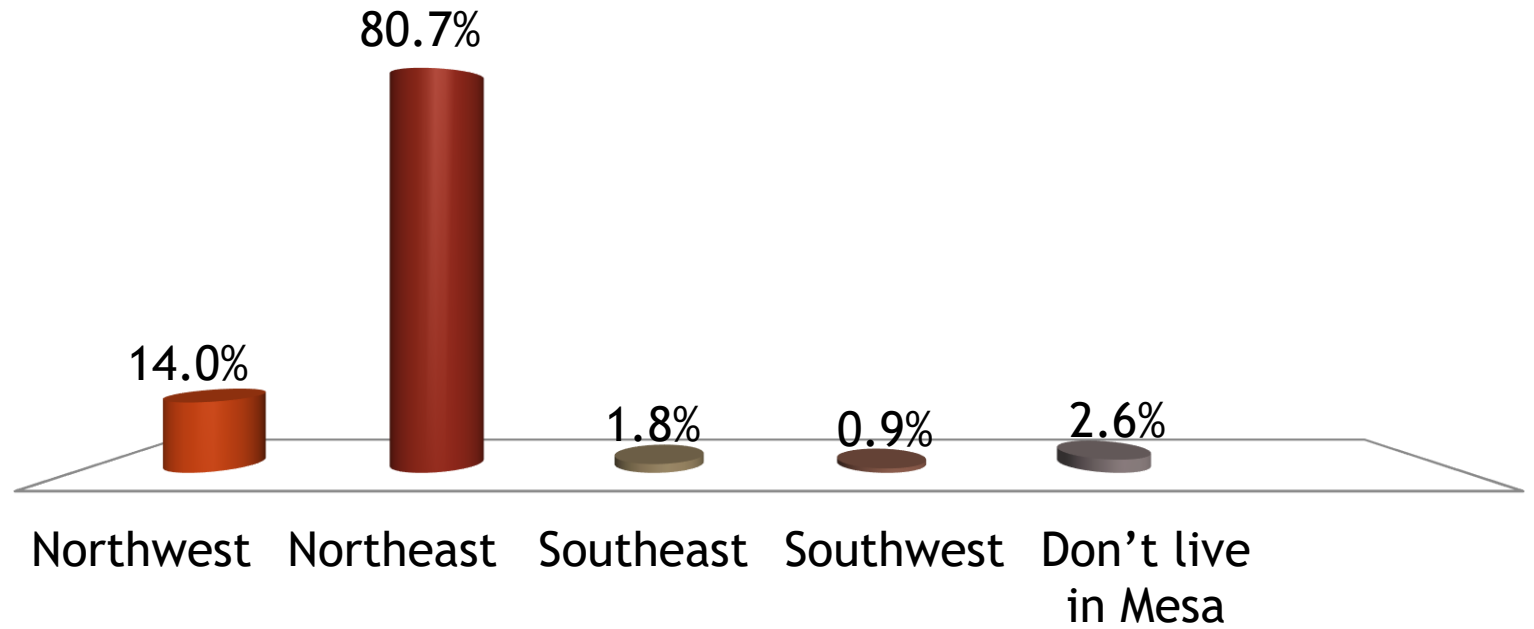


## Q2. In which part of the Project Area do you live, work or own a business?

- A. Northwest
- B. Northeast
- C. Southeast
- D. Southwest
- E. Don't live in Mesa

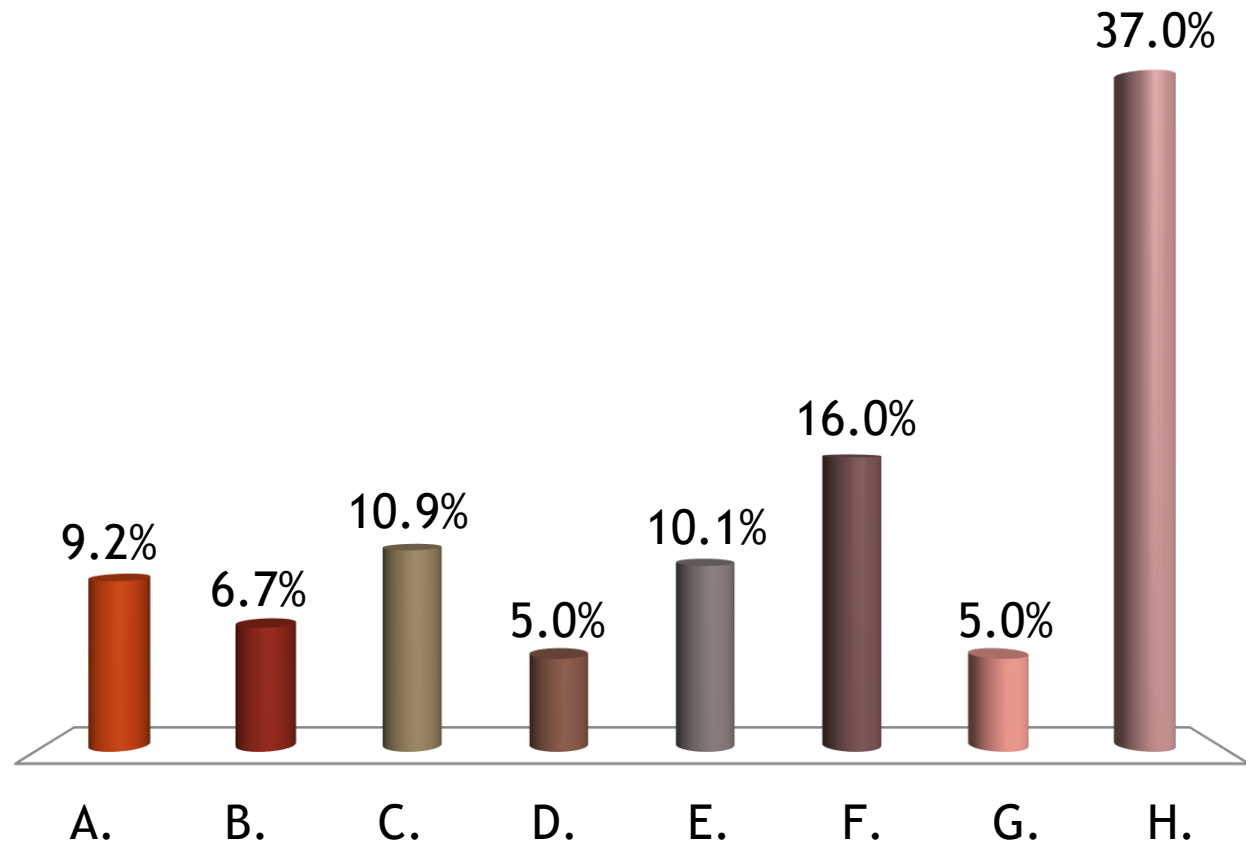


- A. Northwest
- B. Northeast
- C. Southeast
- D. Southwest
- E. Don't live in Mesa



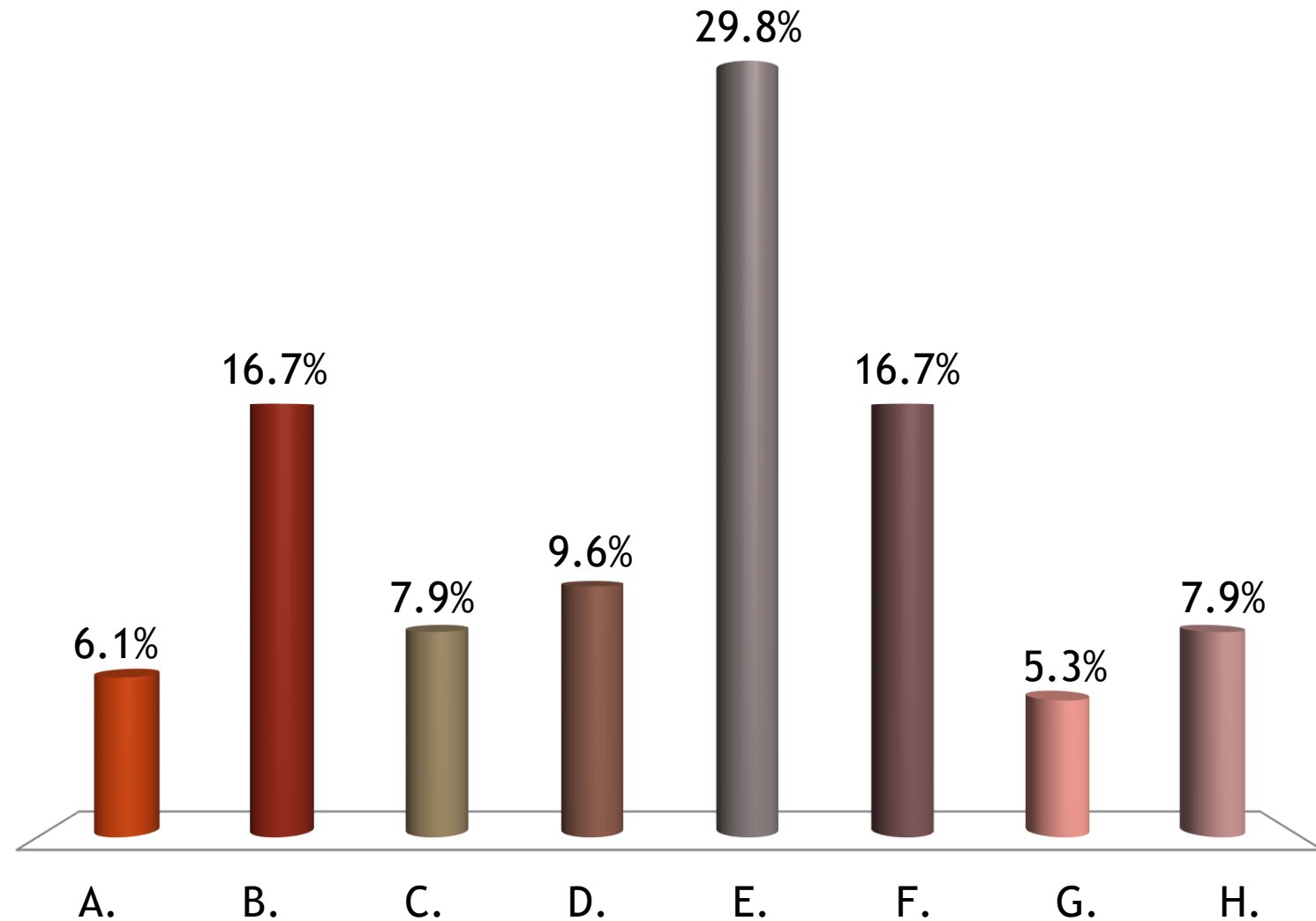
### Q3. What most satisfies you about being in southeast Mesa (select up to 3)?

- A. Close to the airport
- B. Close to City services
- C. Close to dining and shopping
- D. Close to job opportunities
- E. Access to transportation
- F. Access to recreation
- G. Access to education
- H. Other (Top 3)
  - Outside Urban Area
  - Master Planned Community
  - The People



## Q4. What needs to be improved in southeast Mesa (select up to 3)?

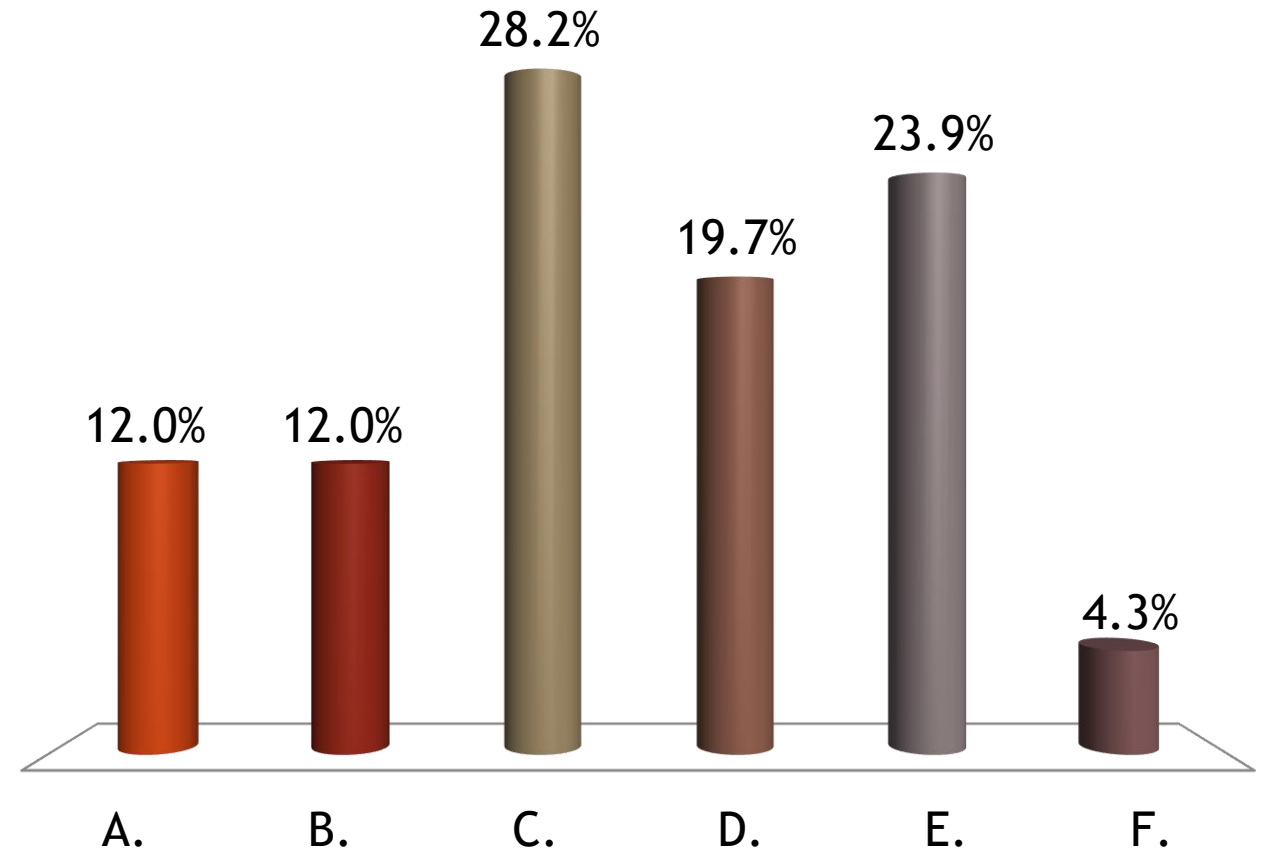
- A. Airport access/expansion
- B. City services
- C. Dining and shopping
- D. Job opportunities
- E. Transportation facilities
- F. Expanded recreation
- G. Expanded education
- H. Other





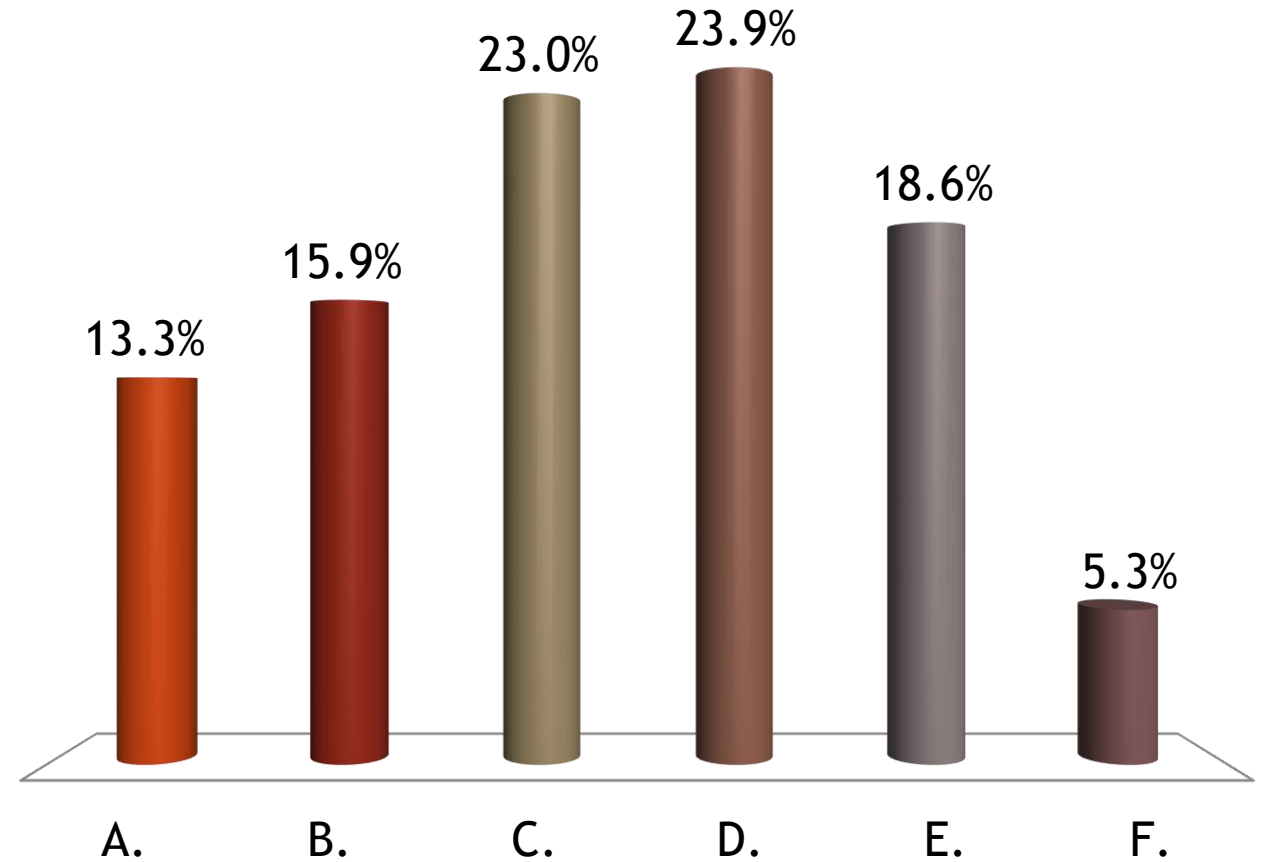
# Q5. What transportation facilities need to be improved in the next 5 years? (select up to 3)

- A. Freeways
- B. Arterials (major roads like Ellsworth, Pecos)
- C. Collectors (minor roads)
- D. Public Transit
- E. Bike/Pedestrian facilities
- F. Don't know / Not sure



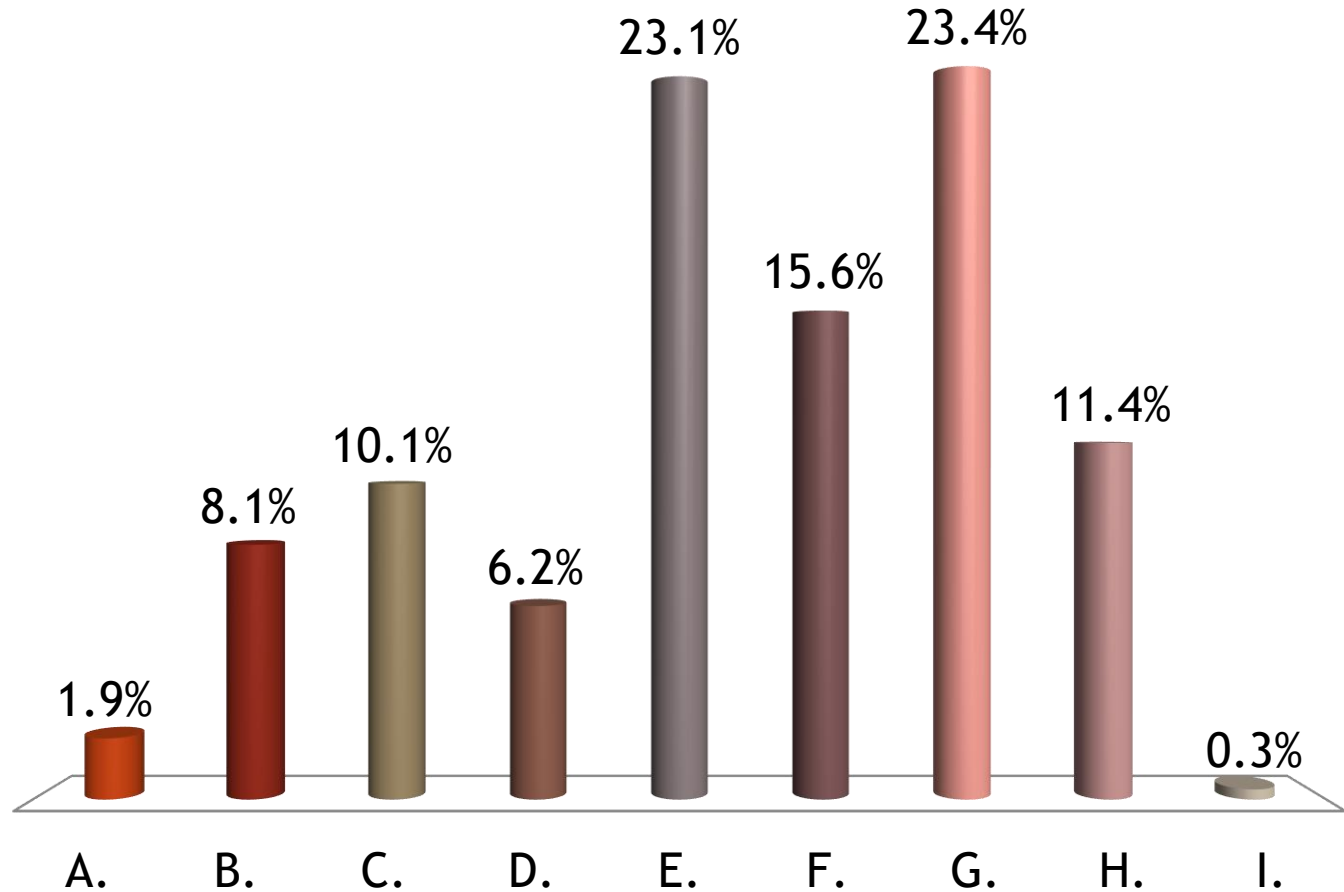
## Q6. What transportation facilities need to be improved in the next 6-10 years? (select up to 3)

- A. Freeways
- B. Arterials (major roads like Ellsworth, Pecos)
- C. Collectors (minor roads)
- D. Public Transit
- E. Bike/Pedestrian facilities
- F. Don't know / Not sure



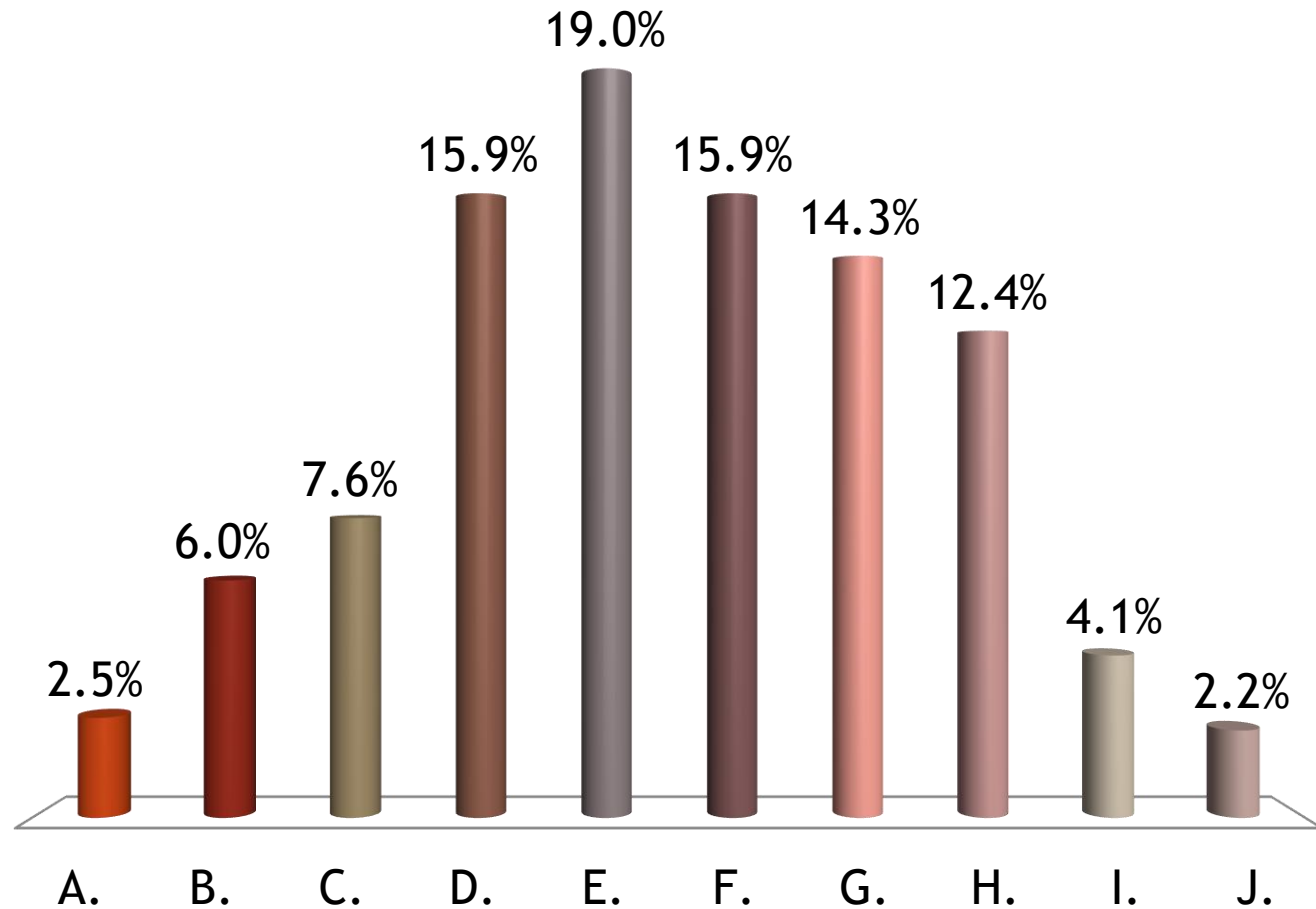
## Q7. Which North/South roadways should be improved first (select up to 3)?

- A. Higley
- B. Power
- C. Sossaman
- D. Hawes
- E. Ellsworth
- F. Crismon
- G. Signal Butte
- H. Meridian
- I. Don't know / Not sure



## Q8. Which East/West roadways should be improved first (select up to 3)?

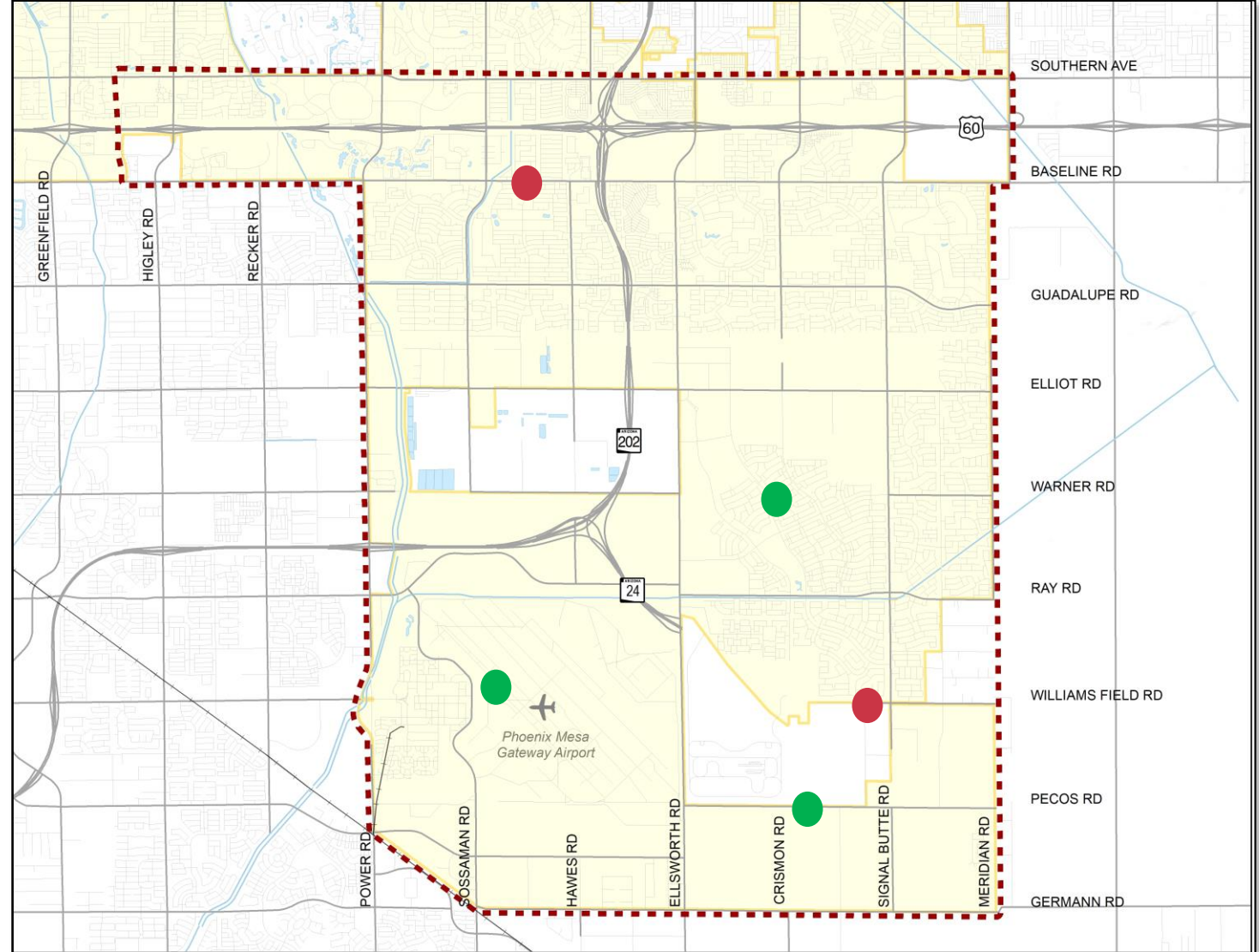
- A. Southern
- B. Baseline
- C. Guadalupe
- D. Elliot
- E. Warner
- F. Ray
- G. Williams Field
- H. Pecos
- I. Germann
- J. Don't know / Not sure



# Mapping Exercise



1. 1 Wall Map
2. Each participant will receive 5 green dots and 5 red dots
3. **Green** - Positive Attributes of Mesa
4. **Red** - Things to be Improved



# Thank You!