



# SOUTHEAST MESA LIBRARY

VIRTUAL PUBLIC MEETING 2 - SEPTEMBER 27<sup>TH</sup>, 2022  
CITY OF MESA PROJECT NO. CP0428





# PANELISTS

**Kevin Thompson** – Councilmember District 6

**Polly Bonnett** – Mesa Public Library Director

**Zac Koceja** – Engineering Project Manager / Landscape Architect

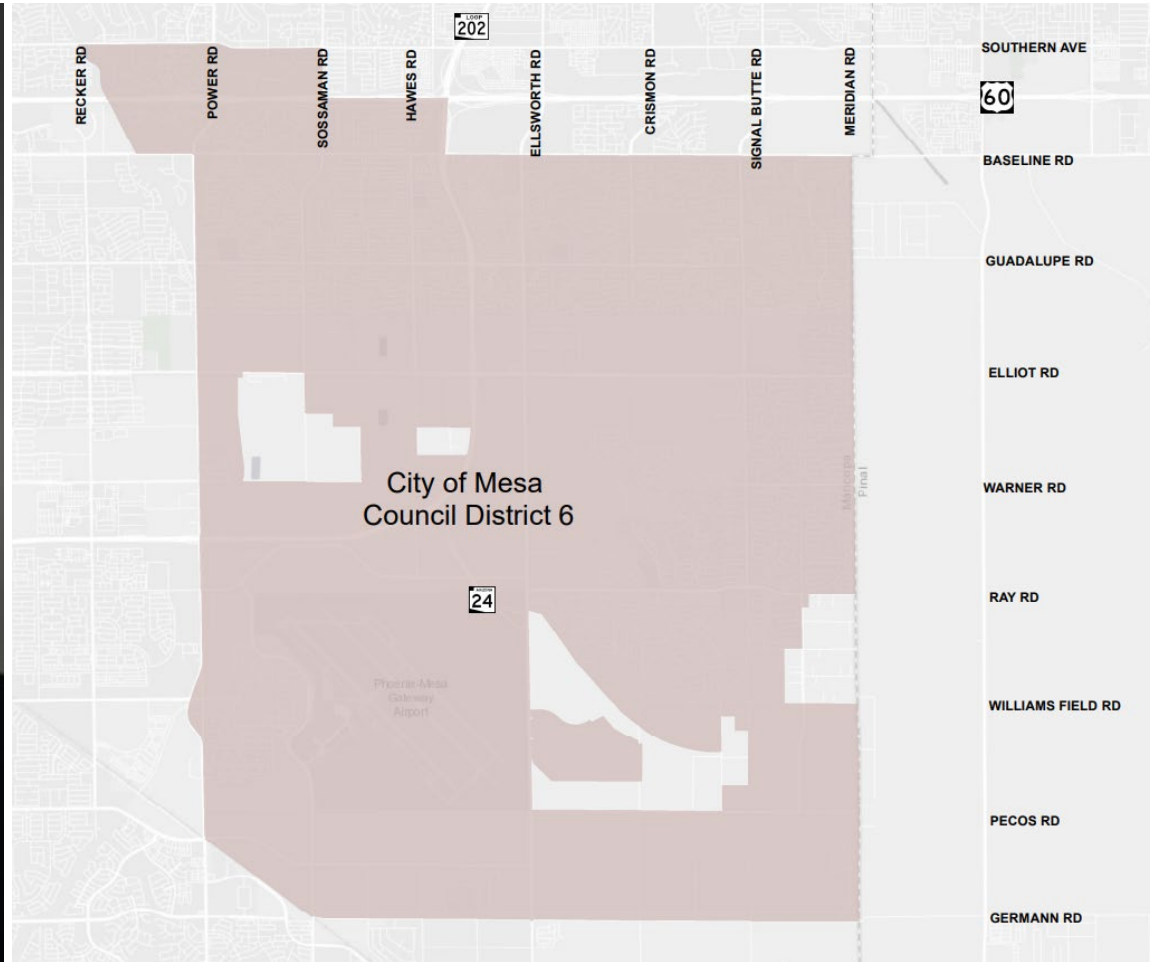
**Curt Albright** – Engineering Public Relations Supervisor

**Jeremy Kotter** – Architect & Project Manager / Richärd Kennedy Architects

# WELCOME

## Kevin Thompson

## Councilmember District 6



# MESA PUBLIC LIBRARY OVERVIEW

<b>Need Identified</b>	2018 Southeast Branch Needs Assessment Report
<b>Scope</b>	New Library
<b>Funding Source</b>	Voter Approved 2018 General Obligation Bond
<b>Size</b>	~30,000 sf
<b>Design</b>	Spring 2022 – Summer 2023
<b>Construction</b>	Summer 2023 – Opening Summer 2024





**EASTMARK  
GREAT PARK**

**BASIS  
MESA**

**KINETIC  
PARK  
HOMES**

**INSPIRIAN  
PARK  
HOMES**

**ORANGE MULTI-USE  
MONSTER FIELD**

**SITE**

**THE RESERVE AT  
EASTMARK**

**STEADFAST  
FARMS**

**LAKE**

**AMPHITHEATER**

**COMMUNITY  
CENTER**

**INSPIRIAN PKWY**

**SEASTMARK PKWY**

**E RAY RD**

**LOCATION**

\*YOU CAN USE THE "CHAT" OPTION TO SUBMIT YOUR QUESTIONS & COMMENTS AT ANY TIME







# LIBRARY AS "MARKETPLACE"

\*YOU CAN USE THE "CHAT" OPTION TO SUBMIT YOUR QUESTIONS & COMMENTS AT ANY TIME



MESA PUBLIC LIBRARY

**willmeng**

**RICHÄRD  
KENNEDY  
ARCHITECTS**



**EASTMARK  
GREAT PARK**

**BASIS MESA**

**ORANGE  
MONSTER**

**KINETIC PARK  
HOMES**

**INSPIRIAN PARK  
HOMES**

**STEADFAST  
FARMS**

**THE LAKE**

**AMPHITHEATER**

**S EASTMARK PKWY**

**INSPIRIAN PKWY**

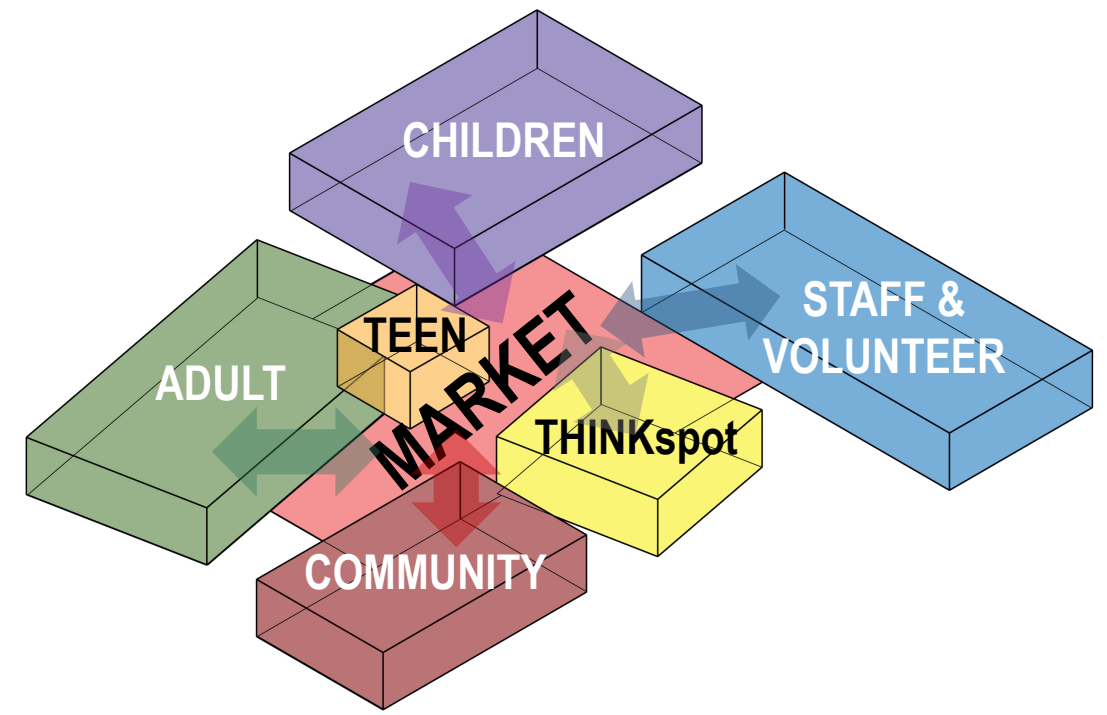
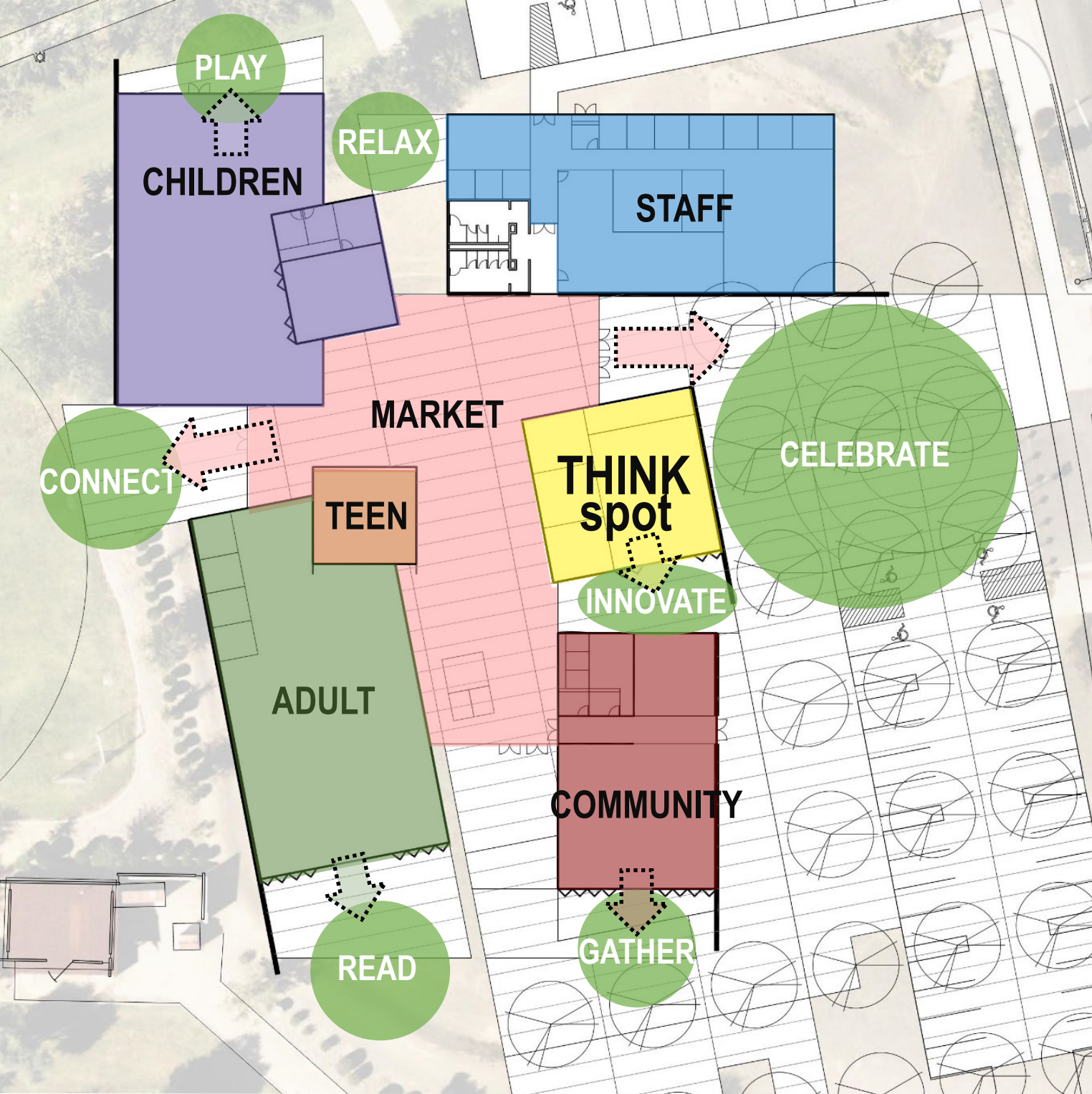
**COMMUNITY  
CENTER**

**CONCEPTUAL SITE PLAN**

\*YOU CAN USE THE "CHAT" OPTION TO SUBMIT YOUR QUESTIONS & COMMENTS AT ANY TIME







# CONCEPTUAL APPROACH

\*YOU CAN USE THE "CHAT" OPTION TO SUBMIT YOUR QUESTIONS & COMMENTS AT ANY TIME











CHILDREN

TEEN

ADULT

READING DECK

STAFF

SENSORY / AUTISM SPACE

STORYTIME

RESTROOMS

THINKSPOT

MULTI-PURPOSE

# FLOOR PLAN

\*YOU CAN USE THE "CHAT" OPTION TO SUBMIT YOUR QUESTIONS & COMMENTS AT ANY TIME







# SITE PLAN

\*YOU CAN USE THE "CHAT" OPTION TO SUBMIT YOUR QUESTIONS & COMMENTS AT ANY TIME







**VIEW FROM EASTMARK PARKWAY**  
 \*YOU CAN USE THE "CHAT" OPTION TO SUBMIT YOUR QUESTIONS & COMMENTS AT ANY TIME







Library

# MAIN ENTRY

\*YOU CAN USE THE "CHAT" OPTION TO SUBMIT YOUR QUESTIONS & COMMENTS AT ANY TIME







# VIEW FROM PARKING PLAZA

\*YOU CAN USE THE "CHAT" OPTION TO SUBMIT YOUR QUESTIONS & COMMENTS AT ANY TIME







**VIEW FROM SOUTHEAST**

\*YOU CAN USE THE "CHAT" OPTION TO SUBMIT YOUR QUESTIONS & COMMENTS AT ANY TIME





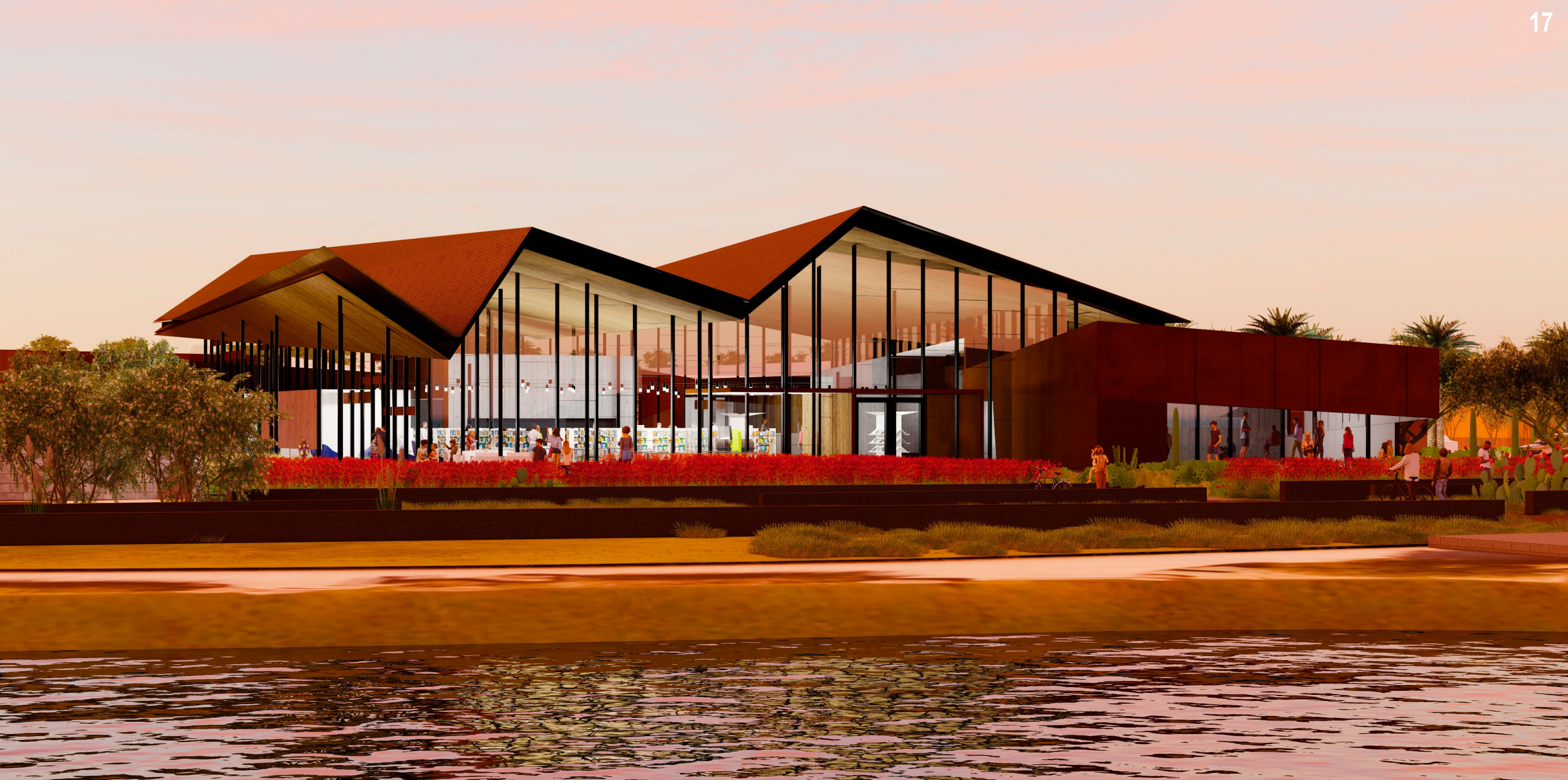


# SOUTH ENTRY & READING DECK

\*YOU CAN USE THE "CHAT" OPTION TO SUBMIT YOUR QUESTIONS & COMMENTS AT ANY TIME







# SOUTH ENTRY DUSK

\*YOU CAN USE THE "CHAT" OPTION TO SUBMIT YOUR QUESTIONS & COMMENTS AT ANY TIME







# INTERIOR : MAIN ENTRY

\*YOU CAN USE THE "CHAT" OPTION TO SUBMIT YOUR QUESTIONS & COMMENTS AT ANY TIME







# INTERIOR : SOUTH ENTRY

\*YOU CAN USE THE "CHAT" OPTION TO SUBMIT YOUR QUESTIONS & COMMENTS AT ANY TIME



MESA PUBLIC LIBRARY

**willmeng**

**RICHÄRD  
KENNEDY  
ARCHITECTS**



# FEEDBACK : Q+A

It's time to hear from you. Please submit comments and questions by using the chat window on your screen to enter questions or comments. The panel will then read them aloud and respond.

## Ground Rules:

1. Please keep questions/comments relevant and specific to this project.
2. Please keep questions/comments/concerns as specific as possible.
3. Please do not use inflammatory language in your comments.



# CLOSING REMARKS: SURVEY

Thank you for participating in this design process and providing your feedback. If you have additional comments regarding the items presented, you can contact us the following ways:

1. Add your comments in the **survey** that will pop up when you exit the meeting. The survey will also be e-mailed to you if you wish to answer it later.
2. Email us directly at [Engineering.Info@MesaAZ.gov](mailto:Engineering.Info@MesaAZ.gov) – please reference “Southeast Mesa Library” in the subject line.
3. Contact Curt Albright with the City of Mesa, Engineering Public Relations group at 480-644-5488.

The deadline for comments is October 11<sup>th</sup>, 2022

Stay tuned for future notifications for the project.