

# CP0956SR11 BASELINE SEWER INTERCEPTOR ASSESSMENT AND REHABILITATION

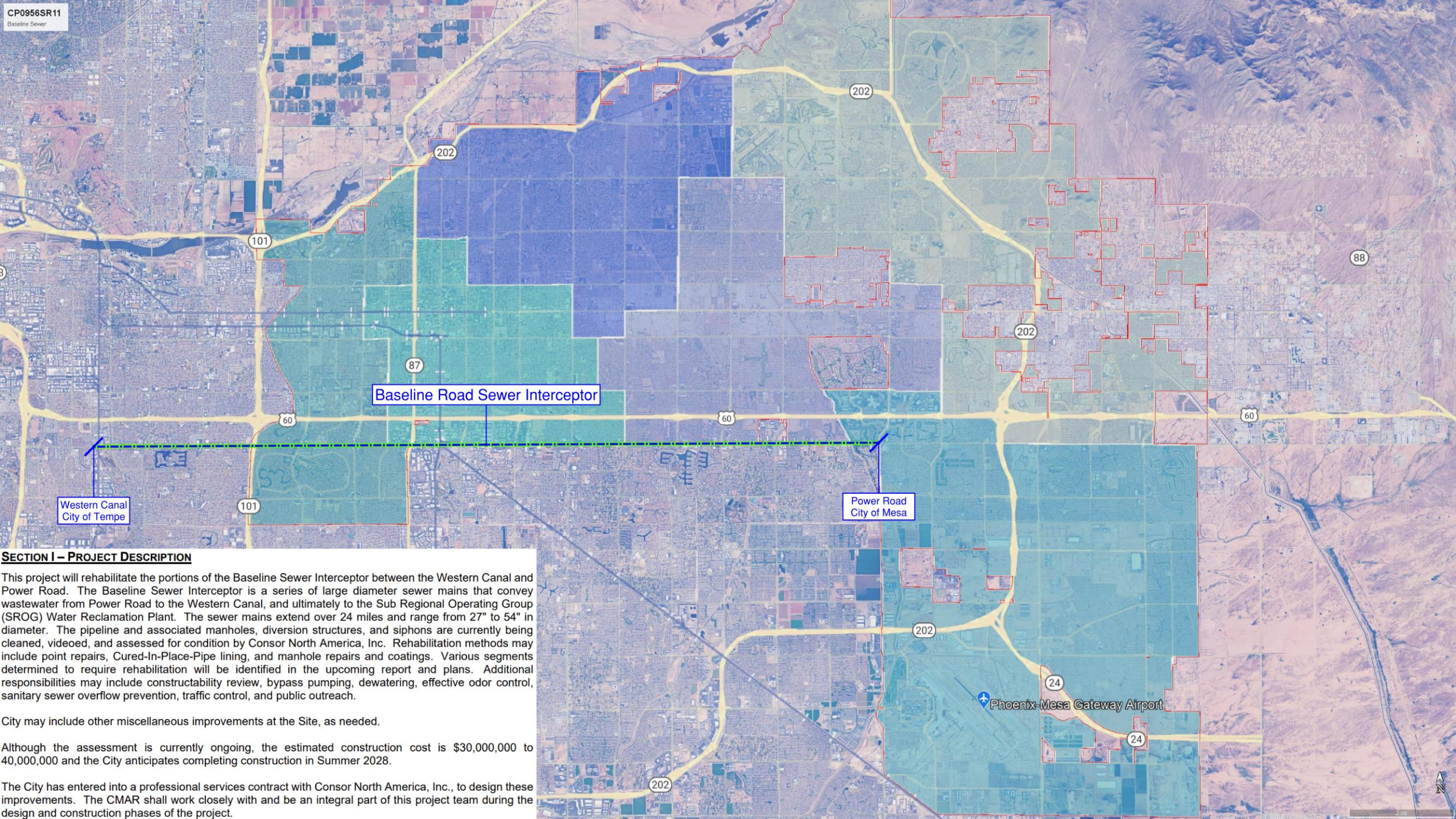
Hugo Vasquez  
Project Manager

---

# PROJECT SUMMARY

---

- This project will rehabilitate the portions of the Baseline Sewer Interceptor between the Western Canal and Power Road. The Baseline Sewer Interceptor is a series of large diameter sewer mains that convey wastewater from Power Road to the Western Canal, and ultimately to the Sub Regional Operating Group (SROG) Water Reclamation Plant.
- The sewer mains extend over 24 miles and range from 27" to 54" in diameter.
- The pipeline and associated manholes, diversion structures, and siphons are currently being cleaned, videoed, and assessed for condition by Consor North America, Inc.



Baseline Road Sewer Interceptor

Western Canal  
City of Tempe

Power Road  
City of Mesa

**SECTION I – PROJECT DESCRIPTION**

This project will rehabilitate the portions of the Baseline Sewer Interceptor between the Western Canal and Power Road. The Baseline Sewer Interceptor is a series of large diameter sewer mains that convey wastewater from Power Road to the Western Canal, and ultimately to the Sub Regional Operating Group (SROG) Water Reclamation Plant. The sewer mains extend over 24 miles and range from 27" to 54" in diameter. The pipeline and associated manholes, diversion structures, and siphons are currently being cleaned, videoed, and assessed for condition by Consor North America, Inc. Rehabilitation methods may include point repairs, Cured-In-Place-Pipe lining, and manhole repairs and coatings. Various segments determined to require rehabilitation will be identified in the upcoming report and plans. Additional responsibilities may include constructability review, bypass pumping, dewatering, effective odor control, sanitary sewer overflow prevention, traffic control, and public outreach.

City may include other miscellaneous improvements at the Site, as needed.

Although the assessment is currently ongoing, the estimated construction cost is \$30,000,000 to 40,000,000 and the City anticipates completing construction in Summer 2028.

The City has entered into a professional services contract with Consor North America, Inc., to design these improvements. The CMAR shall work closely with and be an integral part of this project team during the design and construction phases of the project.



# PROJECT SUMMARY (CONT)

---

- Rehabilitation methods may include point repairs, Cured-In-Place-Pipe lining, and manhole repairs and coatings. Various segments determined to require rehabilitation will be identified in the upcoming report and plans. Additional responsibilities may include constructability review, bypass pumping, dewatering, effective odor control, sanitary sewer overflow prevention, traffic control, and public outreach.
- City may include other miscellaneous improvements at the Site, as needed.

# SCHEDULE

## Key Dates

- 30% Plans (Q3 2024)
- 100% Plans (Q4 2024)
- Construction (Q3 2025-Q2 2028)
- Construction is estimated to end in Summer 2028. Ongoing assessment will determine extent of work.

# COSTS

---

## Projection Of Costs

- Although the assessment is currently ongoing, the estimated construction cost is \$30,000,000 to \$40,000,000.

# QUESTIONS?

---

THANK  
YOU

