

**BROADWAY ROAD (PHASE I)
MESA DR. TO STAPLEY DR.
CONSTRUCTION MANAGER AT RISK (CMAR)
PRE-SUBMITTAL MEETING**

WEDNESDAY, MARCH 20, 2024

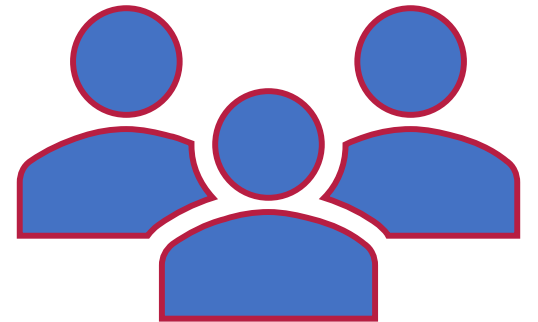
9:00AM TO 10:00AM

MICROSOFT TEAMS

WELCOME TO THE BROADWAY ROAD (PHASE I) MESA DR. TO STAPLEY DR. CMAR PRE-SUBMITTAL MEETING

Project Team

- Craig Alteri – Engineering Project Manager
- Ryan Nichols – Supervising Engineer
- Dennis White – Construction Supervisor
- Jeremiah Williams – Construction Inspector
- Curt Albright / Danitza Romo – Engineering Public Relations
- Stephanie Delgado – Contracts Services Specialist
- Ryan Marks / Chris Woolery – Engineering Consultants
(Kimley Horn)



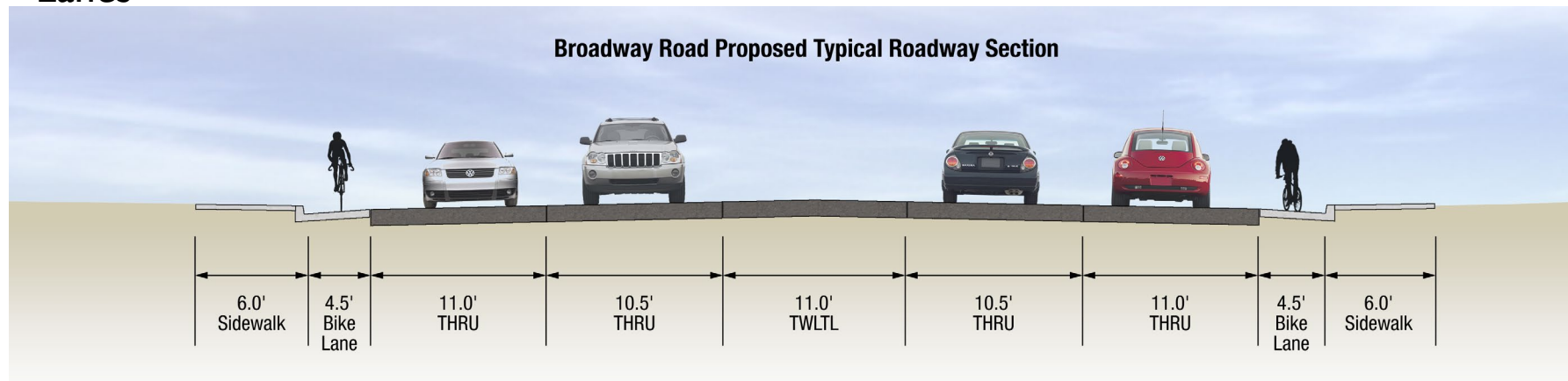
PROJECT LIMIT



PLEASE USE THE “CHAT” OPTION TO TYPE IN YOUR QUESTIONS.

PROJECT SCOPE

- Full Pavement Replacement
- New Right Turn Lanes on all Four Legs of Broadway Rd/Stapley Dr
- Road Widening to Accommodate Bike Lanes
- New Concrete Curb & Gutter
- New 6-ft Wide Sidewalk
- New ADA Concrete Sidewalk Ramps/Driveways



PLEASE USE THE “CHAT” OPTION TO TYPE IN YOUR QUESTIONS.

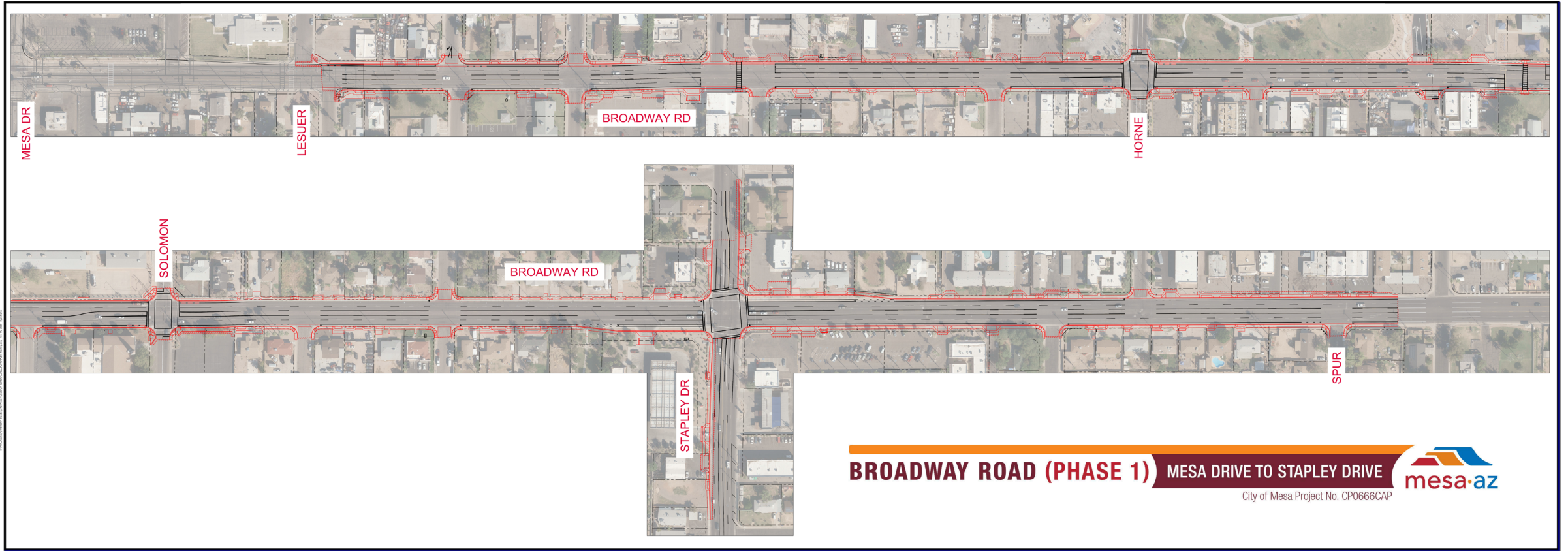
PROJECT SCOPE (CONT.)

- New Catch Basins, Storm Inlets & Storm Drain along Broadway Rd
- New Storm Drain along Stapley Dr from Broadway Rd to 8th Ave
- Traffic Signal Replacement at Horne, Solomon, & Stapley Dr
- Pedestrian Hybrid Beacon Crossing at Eagles Park/Elementary School
- Replace Existing Bus Stops and Shelters
- New Street Lighting
- New Pavement Marking and Signing
- Utilities



PLEASE USE THE “CHAT” OPTION TO TYPE IN YOUR QUESTIONS.

COMPLETE ROADWAY



PLEASE USE THE “CHAT” OPTION TO TYPE IN YOUR QUESTIONS.

UTILITY IMPROVEMENTS

- Replacement of Transmission and Distribution Waterlines
- Replacement of High Pressure and Intermediate Pressure Gas
- Private & Salt River Project Irrigation Relocation
 - SRP Irrigation Work must occur during the SRP dry-up period (see tech specs for additional information)
- Private Utility Relocations (e.g. Century Link/Cox Overhead Fiber)



PLEASE USE THE “CHAT” OPTION TO TYPE IN YOUR QUESTIONS.

PLEASE USE THE “CHAT” OPTION TO TYPE IN YOUR QUESTIONS.

UTILITY IMPROVEMENTS

- SRP Overhead to Underground Conversion Project along Broadway Road (Horne to Stapley)
 - Estimated to begin in Spring 2024
- SRP Electrical Service Conversion (5 properties)



ELECTRIC UNDERGROUNDING

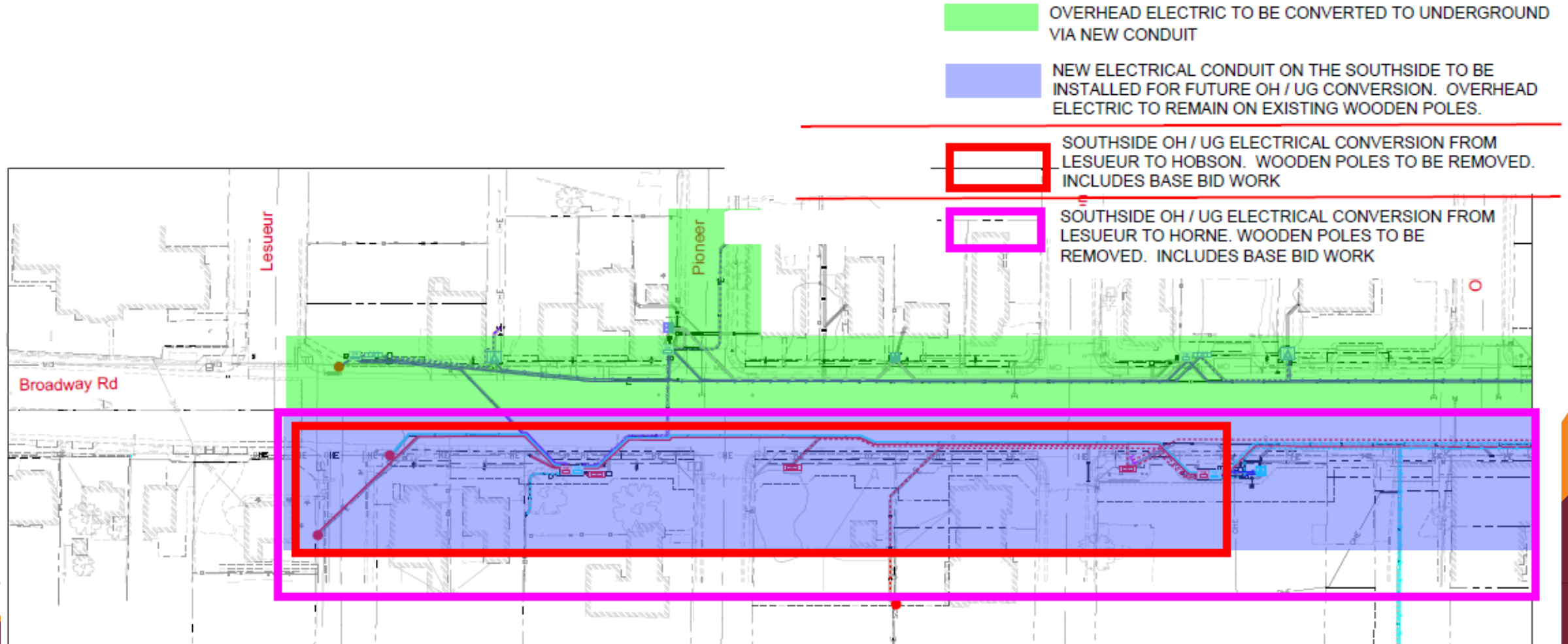
- Undergrounding Existing Overhead 12kV



PLEASE USE THE “CHAT” OPTION TO TYPE IN YOUR QUESTIONS.

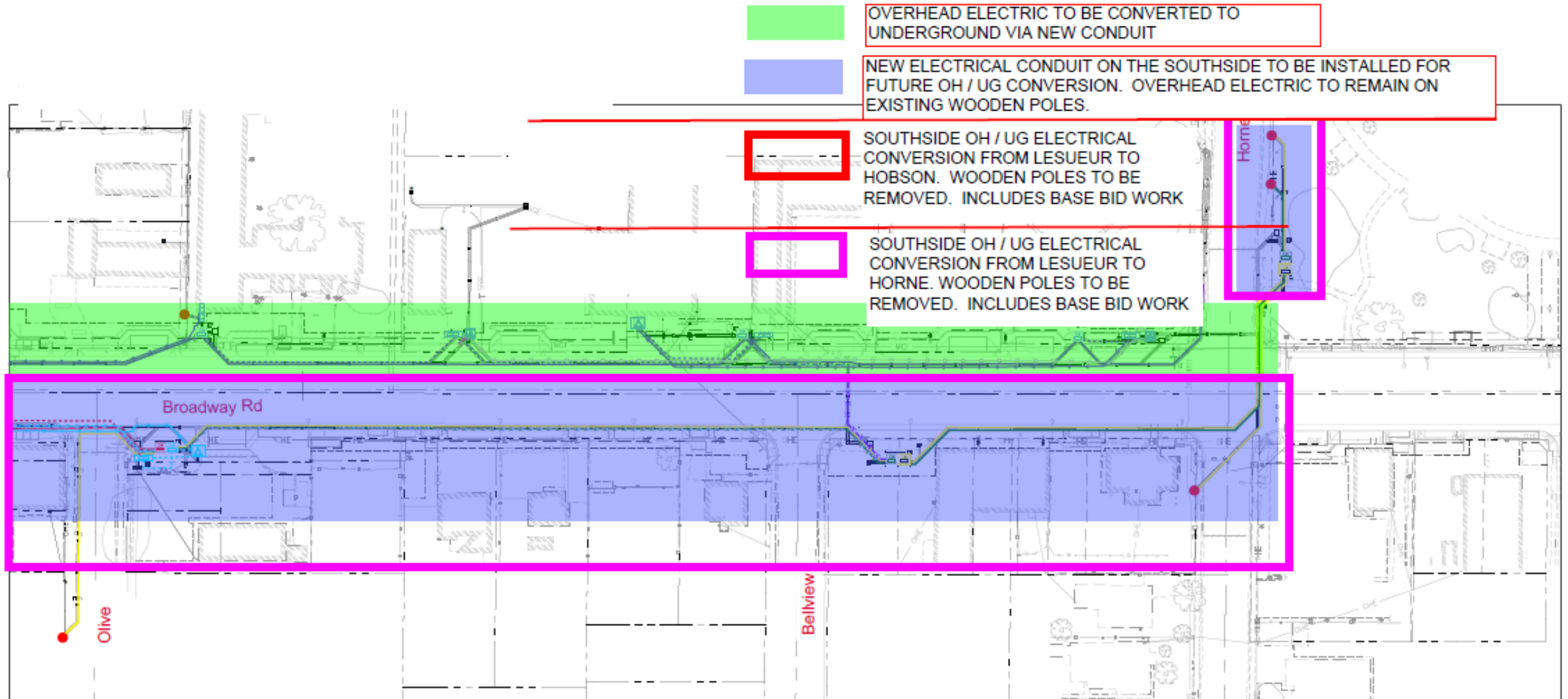
PLEASE USE THE “CHAT” OPTION TO TYPE IN YOUR QUESTIONS.

CITY ELECTRIC UNDERGROUNDING ALTERNATIVES



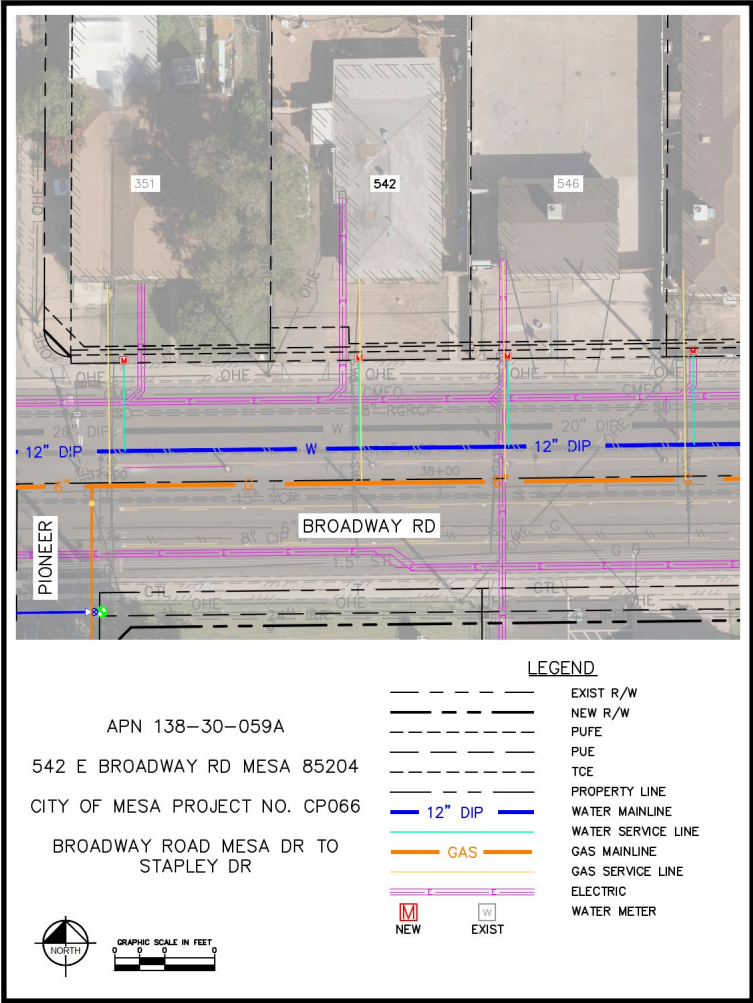
PLEASE USE THE "CHAT" OPTION TO TYPE IN YOUR QUESTIONS.

CITY ELECTRICAL UNDERGROUNDING ALTERNATIVES



PLEASE USE THE "CHAT" OPTION TO TYPE IN YOUR QUESTIONS.

GAS & ELECTRIC SERVICES



PLEASE USE THE “CHAT” OPTION TO TYPE IN YOUR QUESTIONS.

MISCELLANEOUS ITEMS

- Temporary Traffic Control
 - Review the Project Special Provisions
 - Work around Schools
 - Coordination with Non-City Utilities (SRP, Lumen, Cox, etc) working in the Right of Way
- Permit Coordination
 - SRP electrical service to signals and lighting
 - SRP electrical OH / UG service conversion to five (5) properties.
 - MCESD permit requirements – Water Line Construction
 - City of Mesa Building Safety Permit
 - SWPPP / Dust Control
 - AZPDES Permit Compliance

LINES OF COMMUNICATION DURING THE SUBMITTAL PERIOD

- For technical, contract, or other questions, please contact [Stephanie Delgado](#)
- Email: stephanie.delgado@mesaaz.gov

REVIEW OF INSTRUCTIONS TO FIRMS

- Statement of Qualification (SOQ) Due Date:
 - One (1) electronic copy in unencrypted PDF format
 - Due by 2:00 PM on Thursday, April 4, 2024
 - Submit SOQ to Engineering-RFQ@mesaaz.gov
- Shortlist Interviews:
 - Week of May 20, 2024 (Tentative)

REVIEW OF INSTRUCTIONS TO FIRMS

SOQ contents:

- One-page cover letter that contains current company/firm contact information including a valid phone number and email address.
- Maximum of ten (10) pages to address the SOQ evaluation criteria (excluding PPVF's and resumes but including an organizational chart with key personnel and their affiliation).
- Resumes for each team member shall be limited to a maximum length of two pages and should be attached as an appendix to the SOQ.
- Minimum font size shall be 10pt.
- Adherence to the maximum page criterion is critical; each page side (maximum 8 1/2" x 11") with criteria information will be counted. Pages that have project photos, charts, and graphs will be counted towards the maximum number of pages. Table of Contents pages and divider pages will not be counted if they do not contain submittal information.

REVIEW OF INSTRUCTIONS TO FIRMS

SOQ contents (cont'd):

- A statement regarding the Firm's bonding capacity from a surety company or companies holding a Certificate of Authority to transact business in Arizona.
- A statement regarding the Firm's insurability from a company or companies lawfully authorized to transact insurance business in the State of Arizona and rated at least A- in the company's current A.M. Best Company online rating.
- A letter from the firm's insurance company stating the firm's Workers' Compensation Experience Modification Rating (EMR) for the past three (3) years.

EVALUATION CRITERIA

- CMAR SOQ'S will be evaluated on the following criteria (1,000 point total):
 1. General Information (100 Points)
 2. Experience and Qualifications of the Firm / Team and Key Personnel (300 Points)
 3. Understanding of The Project and Approach to Performing the Required Services (350 Points)
 4. Current Workload with the City of Mesa and the Ability of Project Team to Start Immediately (50 Points)
 5. Office Location (50 Points)
 6. Reference Information (150 Points)

QUESTIONS

Please submit comments and questions by using the chat window to type questions or comments.

