

Pecos Road Basins and Storm Drain Improvements

Gunnar Stahmer, Project Manager

Tracy Gumeringer, Contract Services Specialist

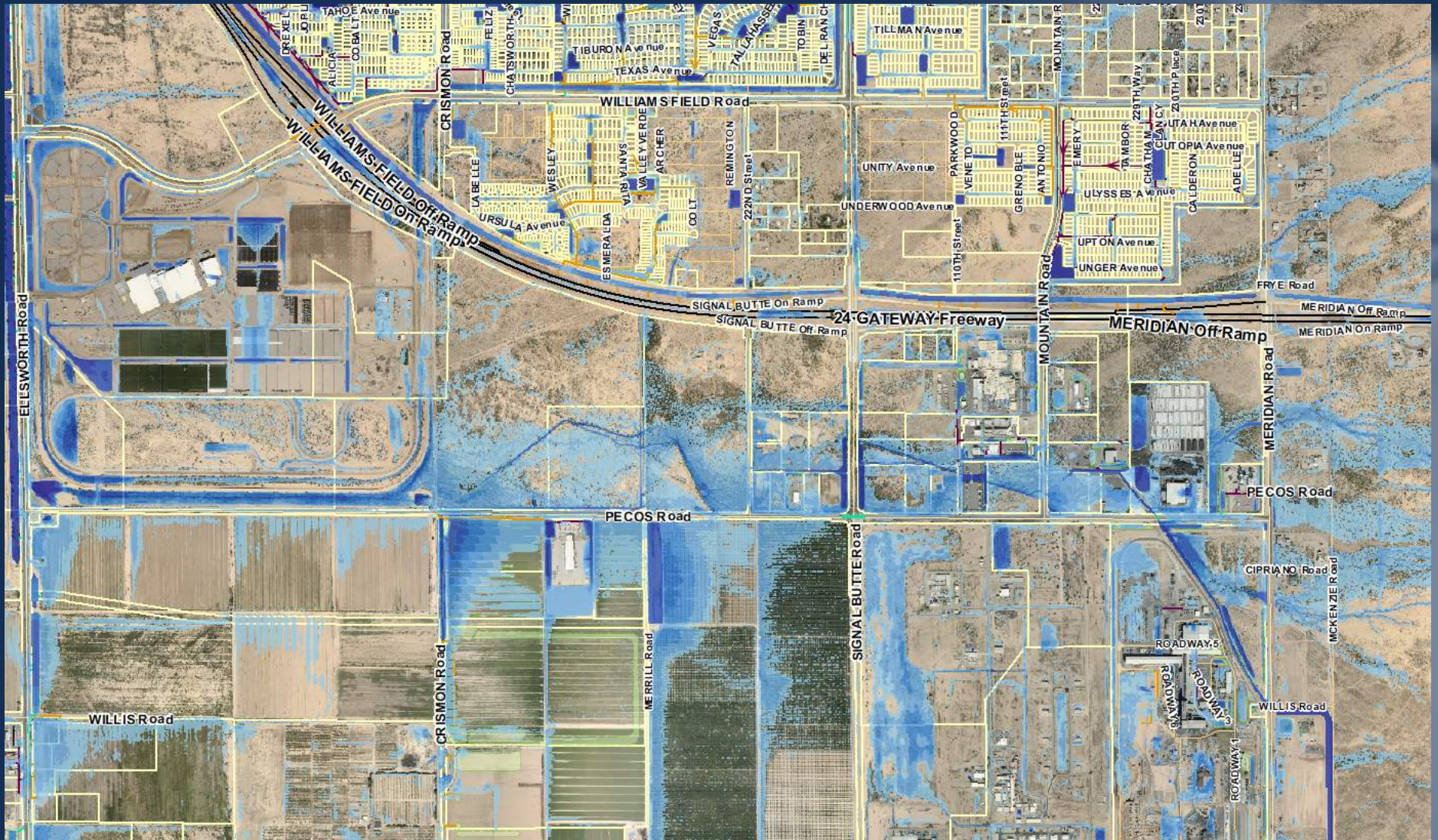


May 1, 2024

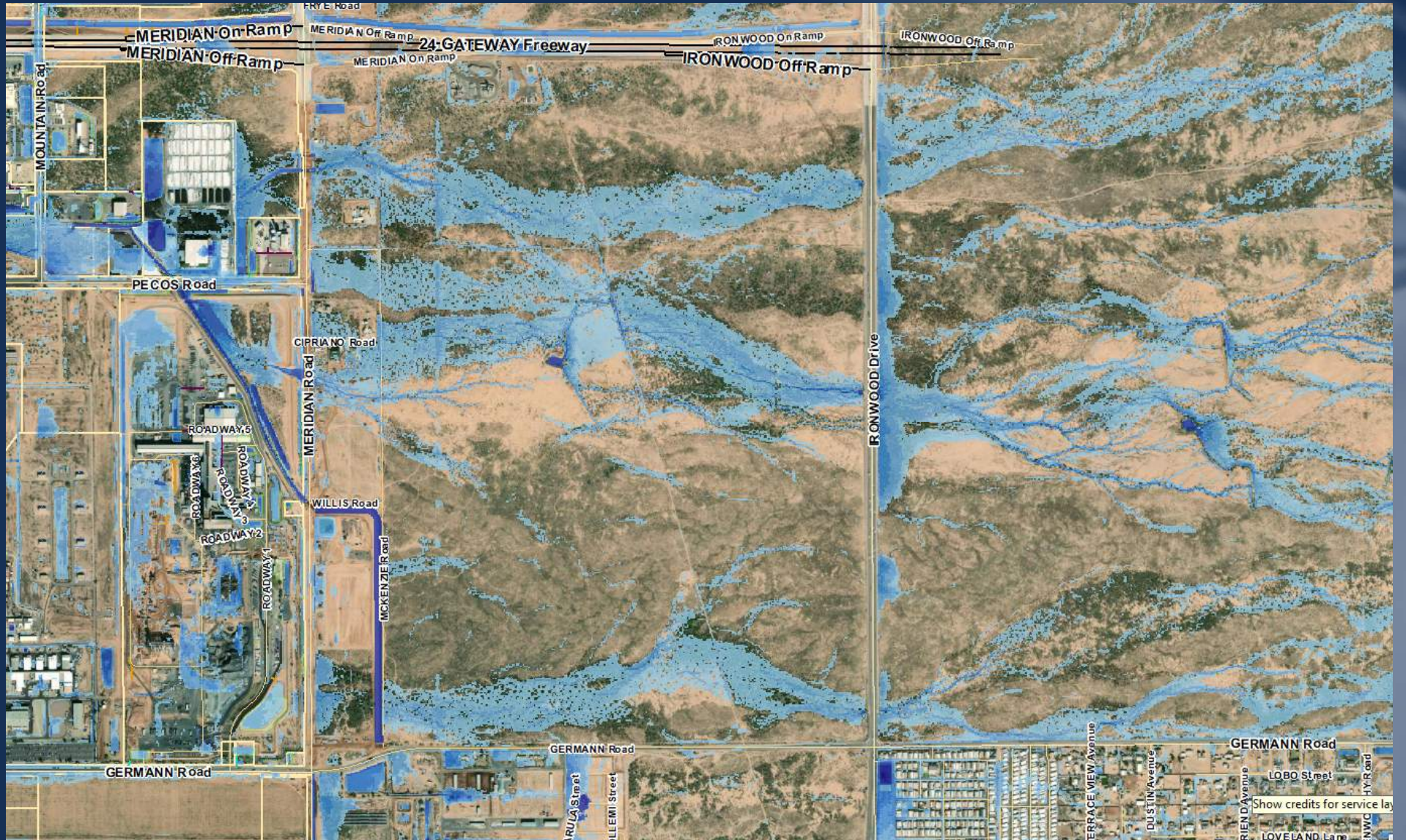
Drainage Along the Pecos Corridor



Drainage Along the Pecos Corridor



Origin of Flows in Corridor



History of the Pecos Corridor

- 2012 – Queen Creek/East Mesa Area Drainage Master Study
- 2015 – Pecos DCR – Design Concept – Considered SR 24
- 2022 – Queen Creek/East Mesa Area Drainage Master Plan Update
- 2023 – Pecos Road Corridor Pre-DCR Assessment
- 2024 – Pecos Road Basins and Storm Drain Improvements– Design RFQ & CMAR RFQ



Desired Comprehensive Solution

Continued engagement with private entities along Pecos Road in working towards a comprehensive solution



CMC Steel Basin Site

- Appraisal and negotiations underway.
- UPRR easement established



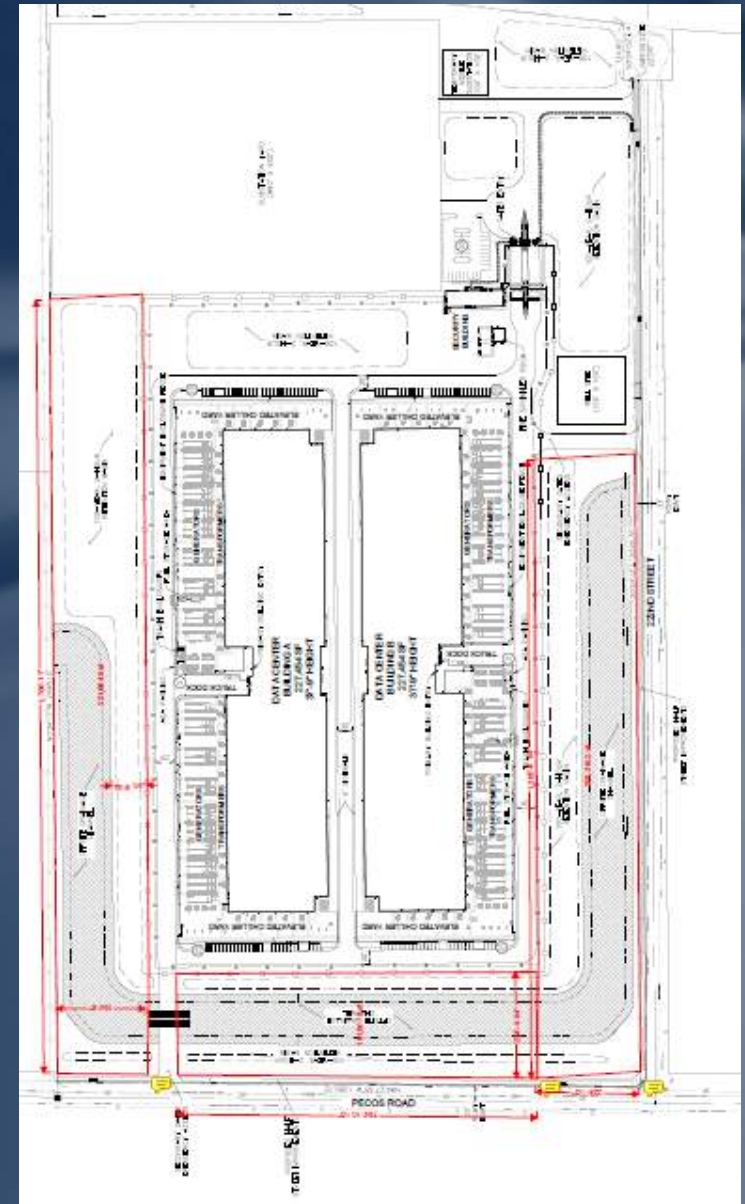
City of Mesa Well Site

- Likely location for future detention basin to distribute flows through the Horne Auto Complex and down Pecos Road.
- Will need to maintain access to well site and communications tower



Amazon Data Center

- Hydrologically, the location where a detention basin makes the most sense for the regional drainage.
- Amazon will likely construct first, with the City to deepen the basins and construct inlet/outlets



Private Developments

- MGC Chemicals America: Q1 2025 – Q4 2025
- Horne Auto Complex (below): They would like to get the Phase 1 infrastructure in ASAP but the building for Phase 1 is project to break ground in Q4 of 2024, with the next two phases (Phase 2 and Phase 3) breaking ground in Q2 of 2025, and Phase 4 breaking ground in Q4 of 2025.
- Amazon Data Center: Q4 2024 – Q3 2025



Schedule & Phasing

- Funding provided over FY25, FY26, FY27 to design and construct the project.
 - Will require sequencing of work due to funding
 - Will need to consider timing of private developments
 - Phase 1 construction likely to start Q4 2024
 - Numerous developments underway that would benefit from reduced flows



Phase 3

- Storm Drain from Amazon Basin to Crismon
- Storm Drain from Crismon to Ellsworth

Phase 2

- Storm Drain from City Well Site to Amazon Site
- Excavate Amazon basin
- Landscaping of Amazon basin

Phase 1

- Excavate CMC Steel & City Well Site basins
- Storm Drain from CMC Basin to Well Site Basin
- Landscape for basins

Questions?

